

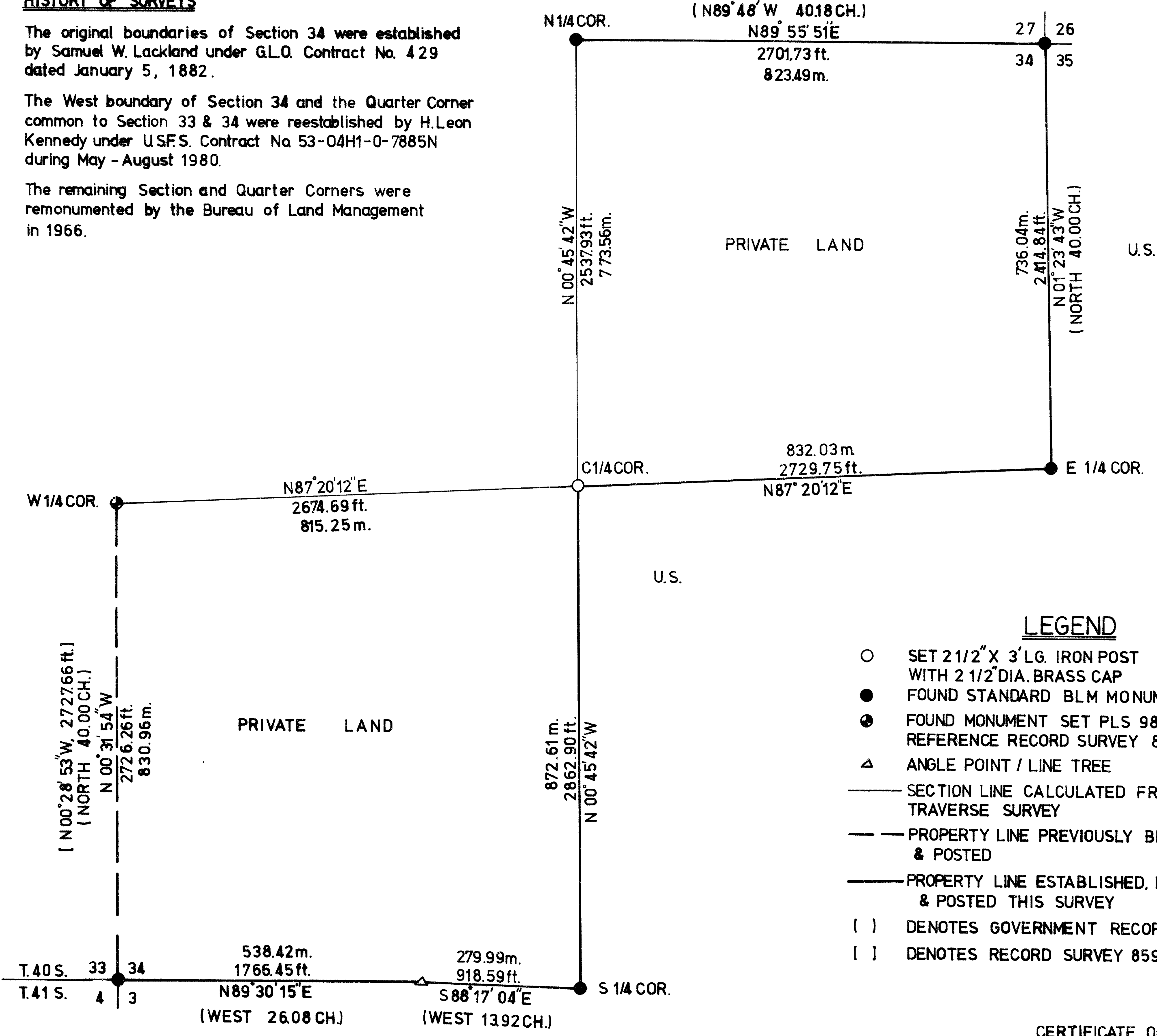
RECORD OF SURVEY
FOR
ROGUE RIVER NATIONAL FOREST
P.O. BOX 520
MEDFORD, OREGON
AUGUST 19, 1984

HISTORY OF SURVEYS

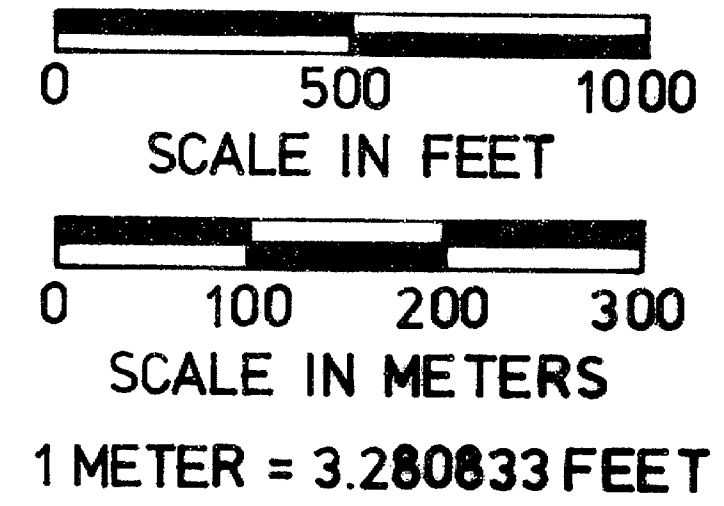
The original boundaries of Section 34 were established by Samuel W. Lackland under G.L.O. Contract No. 429 dated January 5, 1882.

The West boundary of Section 34 and the Quarter Corner common to Section 33 & 34 were reestablished by H. Leon Kennedy under USFS Contract No 53-04H1-0-7885N during May - August 1980.

The remaining Section and Quarter Corners were remonumented by the Bureau of Land Management in 1966.



BASIS OF BEARING: SOLAR OBSERVATION
DECLINATION: 20° EAST



LEGEND

- SET 2 1/2" X 3' LG. IRON POST WITH 2 1/2" DIA. BRASS CAP
- FOUND STANDARD BLM MONUMENT
- ⊕ FOUND MONUMENT SET PLS 981 REFERENCE RECORD SURVEY 8592
- △ ANGLE POINT / LINE TREE
- SECTION LINE CALCULATED FROM TRAVERSE SURVEY
- PROPERTY LINE PREVIOUSLY BLAZED & POSTED
- PROPERTY LINE ESTABLISHED, BLAZED, & POSTED THIS SURVEY
- () DENOTES GOVERNMENT RECORD
- [] DENOTES RECORD SURVEY 8592

SURVEY METHOD: RANDOM TRAVERSE WITH THEODOLITE, ELECTRONIC DISTANCE METER, AND 200FT. STEEL TAPE.

CERTIFICATE OF SURVEY

"I, Paul E. Lauch, a Registered Land Surveyor, State of Oregon, hereby certify that this plat and the notes hereon, or attached, are a correct representation of a survey I performed during July-August 1984, for the U.S. Forest Service, in accordance with the statutes of the State of Oregon and with the articles of my contract."

Paul E. Lauch (s) Paul E. Lauch
Registered Land Surveyor
Oregon License # 382



** RECEIVED **
Date: 8/27/84 By: K
This survey consists of:
1 sheet(s) Plan
8 page(s) Narrative
JACKSON COUNTY SURVEYOR

EXAMINED AND ACCEPTED FOR THE U.S. FOREST SERVICE
THIS 27 DAY OF AUGUST, 1984
Randall M. Jones C.O.R.

DEPENDENT RESURVEY AND SECTION SUBDIVISION OF SECTION 34, T.40 S., R.4 W. WILLAMETTE MERIDIAN

And the following accessories:

A 25-inch diameter Ponderosa Pine bears N31°00'E 49.6 feet distance with partially visible scribing on opened blaze, and USFS sign 54-3.

A 16-inch diameter Ponderosa Pine bears S83°00'E 14.8 feet distance with unhealed blaze scribed $\frac{1}{4}$ S3BT, and BLM sign S-9.

A felled 15-inch diameter Douglas-fir snag bears S16°00'W 18.2 feet distance with preserved blaze scribed $\frac{1}{4}$ S3BT, and BLM sign S-9.

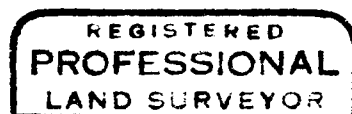
A 14-inch diameter Sugar Pine bears N64 $\frac{1}{2}$ °W 39.2 feet distance with healed blaze, and BLM sign S-9.

Special Note:

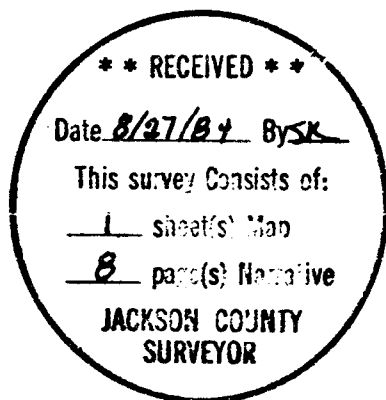
Throughout the retracement survey and during the marking and posting of the boundaries of this project, several sets of blazed lines apparently of varying ages were observed that do not correspond to the final marked and posted boundary. A search of the record of surveys kept in the Jackson County Surveyors Office disclosed no other previous surveying activities in Section 34 than by Lackland in 1882 or by Kennedy in 1980 as previously noted herein.

August 19, 1984

Paul E. Lauch
Registered Professional Land Surveyor
Oregon Certificate No. 382



Paul E. Lauch
OREGON
MAY 4, 1956
PAUL E. LAUCH
382



Corner to sections 34 and 35

Found a mound of stones in which was set a $2\frac{1}{2}$ -inch diameter galvanized iron post with a standard marked U. S. Dept of the Interior brass cap and the following stamped marking:

T 40S R4W
S 34 $\frac{1}{4}$ | S35
1966

And the following accessories:

A 12-inch diameter Ponderosa Pine bears N62°00'E 41.3 feet distance, blaze scribed $\frac{1}{4}$ S35 BT, and a BLM sign S-9.

A 20-inch Ponderosa ("yellow") Pine snag bears S71 $\frac{1}{2}$ °E 47.4 feet distance. No scribing or old blazing visible. Some more recent chopping near base of tree showing.

A 14-inch diameter Black Oak bears S29 $\frac{1}{2}$ °E 89.4 feet distance, with a healed blaze and a USFS sign 54-3.

A 17-inch diameter Ponderosa Pine bears S83°W 12.0 feet distance, blaze scribed $\frac{1}{4}$ S34BT and a BLM sign S-9.

One-quarter corner to Sections 34 and 3

Found a mound of stones in which was set a $2\frac{1}{2}$ -inch diameter galvanized iron post with a standard U. S. Dept. of the Interior brass cap with standard cast markings and the following stamped markings:

T 40S R4W
S34
 $\frac{1}{4}$ ———
S3
T 41S R4W
1966

A 24-inch diameter Douglas-fir with a red-painted band bears S40°00'E 50.6 feet distance with a healed blaze and BLM sign S-9 and USFS signs 54-3 (2) and 54-4.

A polymer guard post with USFS sign 54-4.

Corner to sections 26, 27, 34 and 35

Found a mound of stones in which was set a 2 5/8 inch diameter galvanized-iron post with a standard marked U. S. Dept. of the Interior brass cap and the following stamped marking:

T40S	R4W
S27	S26
S34	S35
1966	

And the following accessories:

A 7-inch diameter Douglas-fir bears N10 $\frac{1}{4}$ °E 15.9 feet distance, with a healed blaze and BLM sign S-9.

A 15-inch diameter Douglas-fir bears S75 $\frac{1}{4}$ °E 26.7 feet distance, with a healed blaze and BLM sign S-9.

A 9-inch diameter Canyon Live Oak bears S40 3/4°E 11.6 feet distance, with a partially healed blaze and USFS BT sign 54-3. (This tree was recorded by the BLM in 1966 as marked LS 301)

A 24-inch diameter Madrone bears S58 $\frac{1}{4}$ °W 40.7 feet distance, with a partially visible bark scribing and USFS sign 54-3.

A 32-inch diameter Ponderosa Pine bears N57 3/4°W 65.5 feet distance, with a partially healed blaze where scribe marks BT are clearly visible, and BLM sign S-9.

A 11-inch diameter Madrone bears N37 $\frac{1}{4}$ °E 7.0 feet distance, with healed blaze. (This tree has no other distinguishing marks but was recorded by the BLM in 1966 as marked LS 301)

And the following accessories:

A leaning 20-inch diameter Douglas-fir with a red-painted band bears N30½°E 5.5 feet distance with partially chopped-out blaze with scribing visible, and USFS signs 54-3 and 54-4.

A 12-inch diameter Douglas-fir with a red-painted band bears N63 3/4°E 33.3 feet distance with open blaze scribed T40S R4W S34 BT, and BLM sign S-9.

A 18-inch diameter Douglas-fir with a red-painted band bears S40½°E 27.0 feet distance with a healed blaze, and USFS sign 54-4 and BLM sign S-9.

A 16-inch diameter Douglas-fir with a red-painted band bears S57½°W 54.0 feet distance with a nearly healed blaze with some scribing still visible, and BLM sign S-9 and USFS sign 54-4.

The rotted remains of the apparently original Douglas-fir bearing tree stump bears S52°W 31.2 feet distance with a section of bark showing healed overgrowth.

A polymer guard post with USFS sign 54-4.

One-quarter corner to Sections 27 and 34

Found a mound of stones in which was set a 2½-inch diameter galvanized iron post with a standard U. S. Dept. of the Interior brass cap with standard cast markings and the following stamped marking:

T 40S R4W
S27
‡
S34
1966

And the following accessories:

A 16-inch diameter Douglas-fir with a red painted band bears N1°00'E 25.3 feet distance, with a healed blaze, and BLM sign S-9 and USFS signs 54-3, 54-4, 54-6.

DESCRIPTION OF CORNERS ACCEPTED FOR CONTROL:

One-quarter Corner to Sections 33, and 34

Found a mound of stones in which was set a 2½ inch diameter galvanized iron post with a brass cap marked:

T 40S R4W
 ¼
 S33 S34
 1980
 PLS 981

And the following accessories:

A 25-inch diameter Sugar Pine with a red paint band bears N 83¼°W, 58.5 feet distance with an open red painted blaze and scribed ¼ S 33 BT and USFS signs 54-3 and 54-4. And aluminum washer marked PLS 981 nailed to base.

A 6-inch diameter Madrone bears N 34 ¾° E, 16.5 feet distance, bark scribed ¼ S 34 BT and Aluminum washer marked LS 981 nailed to base, and USFS signs 54-3 and 54-4.

Polymer guard post with USFS sign 54-2.

Corner to Sections 33, 34, 3 & 4

Found a mound of stones in which was set a 2½ inch diameter galvanized iron post with a brass cap marked:

U. S. DEPT. OF THE INTERIOR	
UNLAWFUL TO DISTURB	Standard
T 40S R 4 W	Cast Marking
S33 S34	
S4 S3	Stamped marking
T 41 S	
1966	
CADASTRAL SURVEY	
BUREAU OF LAND MANAGEMENT	Standard
	Cast marking

A 6-inch diameter Douglas-fir tree bears N32 $\frac{1}{2}$ °W 10.4 feet distance, scribed APS34BT, and attached brass washer marked PLS 382.

A 8-inch diameter Douglas-fir tree bears S58 3/4°W 16.7 feet distance, scribed APS3BT, and attached brass washer marked PLS 382.

At the calculated position of the center 1/4 corner a 2 $\frac{1}{2}$ inch diameter galvanized iron post with a 2 $\frac{1}{2}$ inch diameter brass cap marked:

PLS 382
T 40S R4 W
C $\frac{1}{4}$ S 34
1984

was set in a 1 $\frac{1}{2}$ foot mound of stone with a 2 $\frac{1}{2}$ foot base, and the following references:

A 10-inch diameter Douglas-fir tree bears N21°57'E, 36.5 feet distance, with blaze scribed C $\frac{1}{4}$ S 34 BT, and attached brass washer marked PLS 382.

A 9-inch diameter Canyon Live Oak tree bears S49°29'E 36.6 feet distance, bark scribed C $\frac{1}{4}$ S 34 BT, and attached brass washer marked PLS 382.

Boundary lines marked with tree blazes (painted with red paint) and posted with aluminum posts (at no less than 150 feet intervals) follow:

East $\frac{1}{2}$ of north line

North $\frac{1}{2}$ of east line

West $\frac{1}{2}$ of south line

East $\frac{1}{2}$ of E-W center-line

South $\frac{1}{2}$ of N-S center-line

Following verification of the aforementioned established corner control, three closed traverses were performed. The first traverse was performed along the south one-half of the west line using different positions at alternate angle points to achieve dissimilar courses. The second traverse was performed in the vicinity of the southwest one-quarter of the section utilizing the Carberry Creek County Road for the westerly component of the traverse.

The third traverse was performed in the vicinity of the northeast one-quarter of the section utilizing the Carberry Creek County Road for the westerly component of the traverse. The results of the closed traverses all exceeded the required precision ratio of 1:5000. From the data produced, the position of the center 1/4 corner of the section was computed, established and monumented as described herein.

At a point equal to the record distance from the south one-quarter corner is an existing Sugar Pine tree with a blaze scar on the east side which upon boring showed over-growth of approximately 92 years. Allowing 10 years for the tree to heal the scar to that point would indicate this tree was marked at the time of the original survey. After a thorough and diligent search in the vicinity for evidence of other trees that could have been the recorded line-tree, I concluded that the marked Sugar Pine is the original line-tree, although its position is approximately 20 feet north of a straight line connecting the southwest corner and the south 1/4 corner. From this angle point the following references were marked:

NARRATIVE OF SURVEY TO CONFORM WITH
OREGON REVISED STATUTES 209.250

SURVEY FOR: U. S. Department of Agriculture, Forest Service, Rogue River National Forest
P. O. Box 520
Medford, Oregon 97501

CONTRACT: Grouse Creek Cadastral Survey Contract
No. 43-04N7-4-522

LOCATION: Section 34, Township 40 South, Range 4
West, Willamette Meridian, Jackson County,
Oregon.

BASIS OF BEARING: Solar Observation

PURPOSE: To establish the center of the section
and mark and post the National Forest
boundary along certain exterior and interi-
or lines of the section.

EQUIPMENT USED: A Topcon TL6DE Theodolite. A Topcon
DM-S1 Electronic Distance Meter, and a
200' steel tape.

PROCEDURE: A search of the available records revealed
that the original surveys for this township
and section were performed by Samuel W.
Lackland under G. L. O. Contract No. 429
dated January 5, 1882. Subsequent perpetu-
ation of all of the necessary controlling
corners except the West 1/4 corner of this
section was performed by U. S. Dept. of
Interior Bureau of Land Management Cadastral
Surveyors in 1966, by remonumenting them
from original evidence existing at that
time.

The West 1/4 Corner was established in 1980
by H. Leon Kennedy under U. S. Forest Ser-
vice Contract No. 53-04H1-0-7885N.