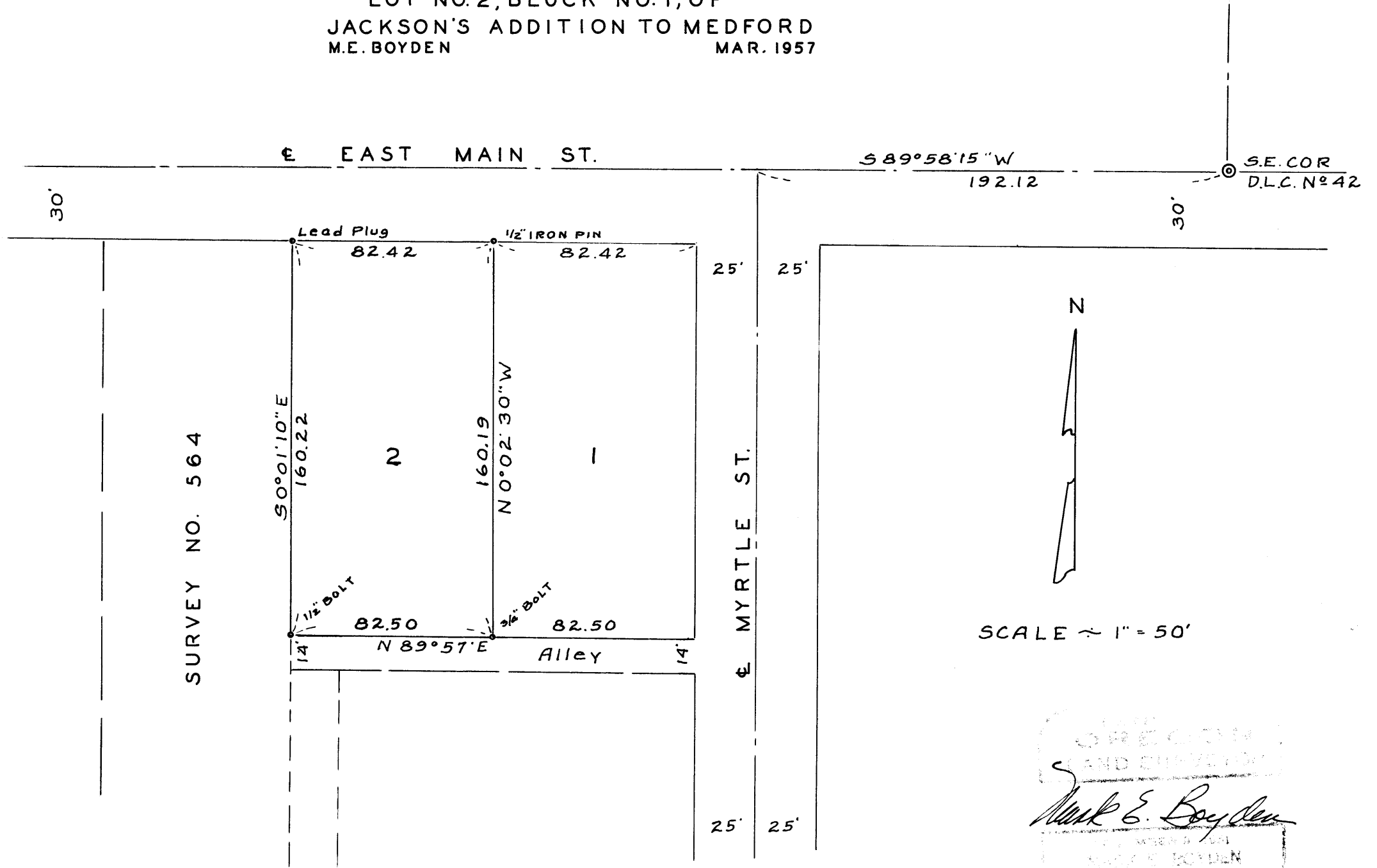


SURVEY FOR
 J.W. BURBA
 LOT NO. 2, BLOCK NO. 1, OF
 JACKSON'S ADDITION TO MEDFORD
 M.E. BOYDEN MAR. 1957



SURVEY NO. 564

THE
 OREGON
 LAND SURVEYOR
M. E. Boyden
 M. E. BOYDEN

Survey Narrative to Comply with Paragraph 209.250,
Oregon Revised Statutes

FOR: J. W. Burba

PURPOSE: To survey and monument Lot No. 2, Block No. 1, of
JACKSON'S ADDITION to Medford.

PROCEDURE: Recorded Survey No. 564, made by this office,
was a survey of a portion of Army Subdivision, which is a
subdivision of Lots 3, 5, and 6 of said Jackson's Addition.
While making said survey, several monuments were found and
used for the control of said Army Subdivision.

From the above mentioned controls, the West line of
Lot No. 2 of said Jackson's Addition and the alley along the
South side of Lots No. 1 and 2 was established. Myrtle Street
was previously established by this office by using a record
distance West of the Southeast corner of D.L.C. No. 42 for
the North end of said Street, and monuments found to control
the line.

By using the Record location of East Main Street and
the above mentioned controls, said Lots 1 and 2 were inclosed
and the line between these lots was established by a propor-
tion along the North and South boundaries. Monuments were
set as shown on the map to accompany this report.

March 1957

