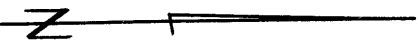
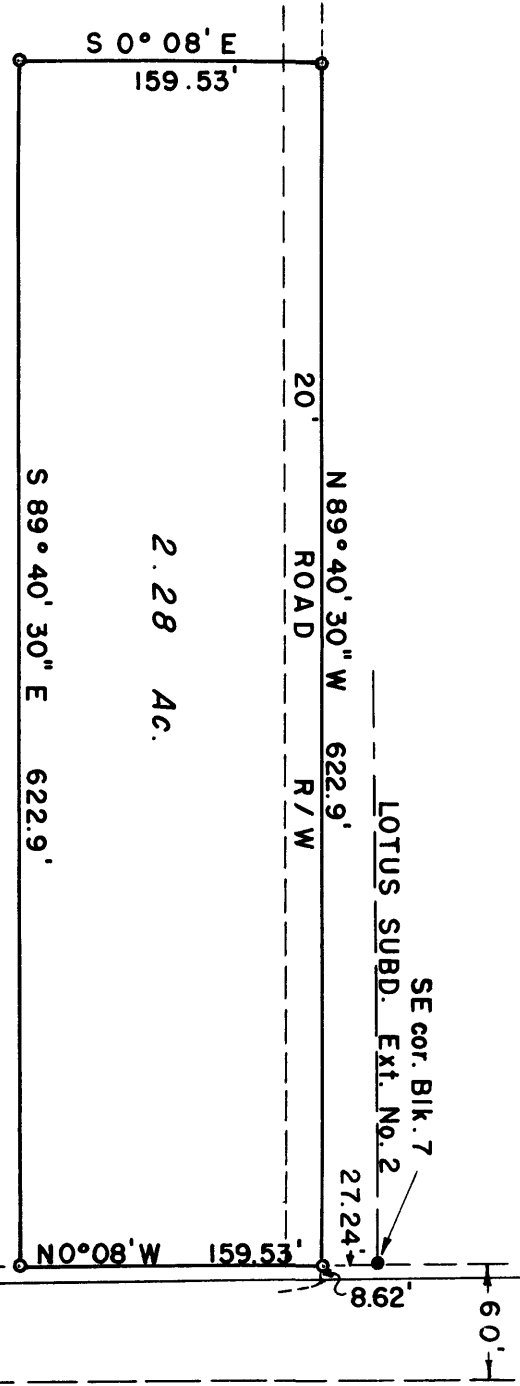
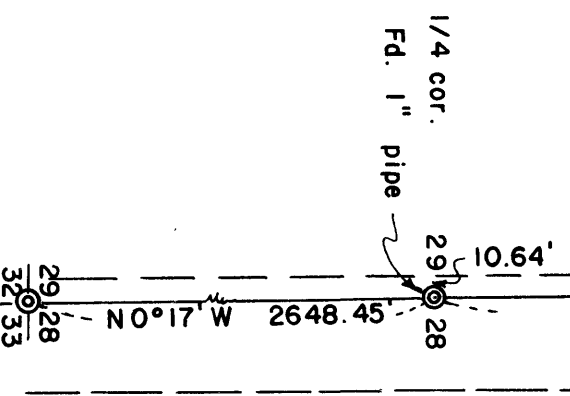


Survey For
 LLOYD TIMMONS
 Located in Sec. 29, T36SRIW, W.M.
 By : Mark E. Boyden
 Jan. 1957



SCALE : 1" = 100'
 Meridian from TIMMONS SUBDIVISION (Solar)

- ⊙ Re-estab. Gov't. corner
- Found iron pin
- Set iron bolt



Mark E. Boyden

20 21
 29 28

108

Survey Narrative to Comply with Paragraph 209.250,
Oregon Revised Statutes

FOR: Lloyd Timmons

PURPOSE: To monument and describe a parcel in the Northeast corner of the Lloyd Timmons ownership in Section 29, Township 36 South, Range 1 West.

PROCEDURE: Found the Section line and road boundary controls as previously set by this office in the surveying of TIMMONS and ROXY SUBDIVISIONS.

From the previously established distance North from the Southeast corner of Section 29, ran North on the Section line from the 1/4 corner to Sections 28 and 29, a distance of 767.05 feet to establish the Northeast corner of the Lloyd Timmons property by the Deed Record (See Jackson County Deed Records, Volume 265, Page 513); then ran Westerly parallel to the South boundary of Section 29 for the record North property line. It will be noted that a sizable gap occurs between this record line and the South line of LOTUS SUBDIVISION, EXTENSION NO. 2. Mr. Timmons did not feel, at this time, the necessity of trying to resolve the ownership of this gap, even though it was pointed out that a portion of this gap undoubtedly belonged to his chain-of-title.

Monumented the tracts as shown, using the bearings established on TIMMONS SUBDIVISION for meridian control.

January 1957

