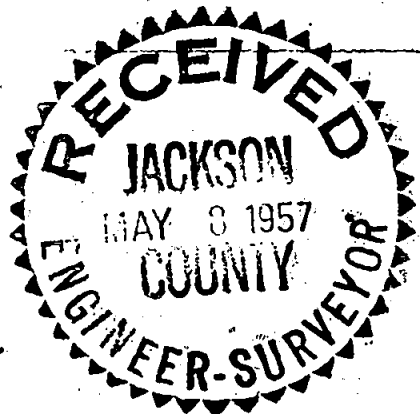
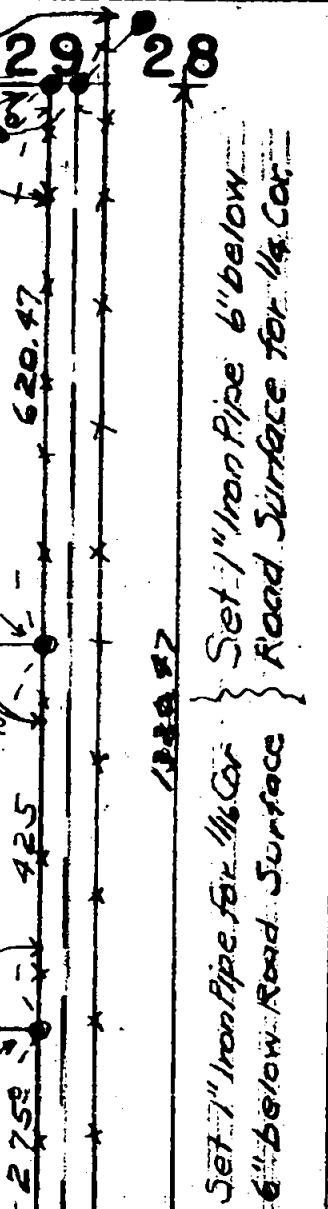
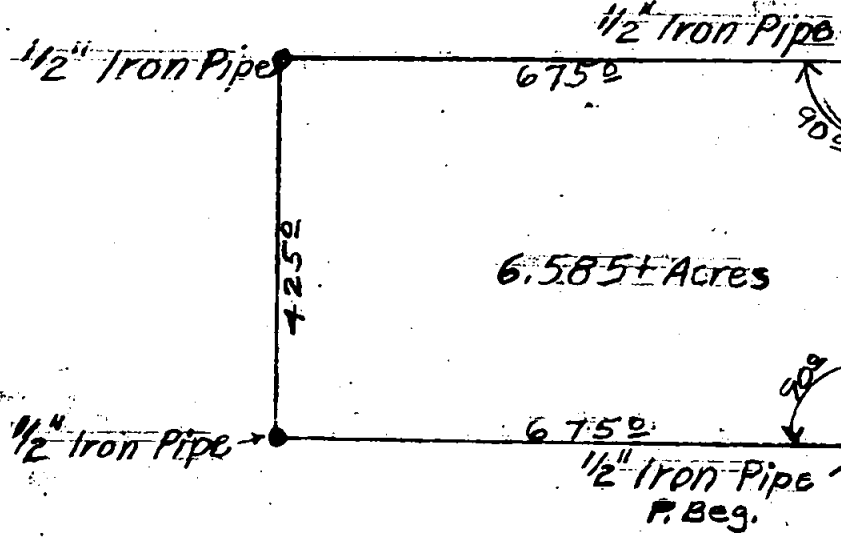


Blaze & Nail 30" W. Oak
S 55° 10' W. 115.90 to 1/4 Cor.

Set 1" I.P. by Fence Cor.
East 30° to 1/4 Cor.



Set 1" I.P. 27.50 of
Fence Cor. 30° to 1/4 Cor.

Blazed & Set North
Tree N. 67° 50' W.
49.32 to 1/16 Cor.

SURVEY PLAT

NE 1/4 of NE 1/4 Sec. 29
Twp. 35 S., R. 2 W., W.M.
APRIL 26, 1957 1" = 240'



Iron Pin in Pav. for Sec. Cor.
1" Gas Pipe Brs N. 61° 1/4 W. 51.0
1" Gas Pipe Brs N. 66° E 52.6

32 33

SURVEY NARRATIVE

April 26, 1957

This survey was made for the purpose of locating the Northeast corner and the Southeast corner of the N. E. $\frac{1}{4}$ of the N. E. $\frac{1}{4}$ of Section 29, Township 35 South, Range 2 West, W. M.; and also to block out a tract of land containing 6.585 plus or minus acres within the said N. E. $\frac{1}{4}$ of the N. E. $\frac{1}{4}$ of said Section 29.

From the records in the County Surveyors office, Jackson County, Oregon, I found that the Southeast corner of said Section 29 had been reestablished in 1914 by the County Surveyor; I found that the corner had been re-established by C. Z. Boyden, County Surveyor, in 1923. At that time Boyden found a stone for the corner and stump and fallen tree original Bearing trees. He lowered the stone for corner, and placed for witnesses, a 1" gas pipe bearing N. $61\frac{1}{4}^{\circ}$ W. 51.0 feet; a 1" gas pipe bearing N. 66° E. 52.6 feet, also marked a 14" W. Oak, bearing S. $63\frac{1}{4}^{\circ}$ E. 47.5 feet.

I found all three witness points, and found a $\frac{1}{2}$ inch iron pin driven in the pavement for the corner. I checked this pin from the above witnesses and found it O.K. For the $\frac{1}{4}$ corner between Sections 28 and 29 of said Township and range, the original survey gave a 10" yellow pine bearing S. 45° W. 123 links (81.18 ft.), and a 10" W. Oak Bearing N. 55° E., 172 links (112.52 ft.). No evidence could be found of the W. Oak. But I found the stump of the 10" yellow pine. It had been cut down. The butt with blaze was laying nearby, badly burned but recognizable. Some of the tree had been cut up and hauled away. The top is still lying on the ground.

With a variation of $20\frac{1}{4}^{\circ}$ East of North, I ran from the yellow pine stump N. 45° E. 81.18 feet and set a point for the $\frac{1}{4}$ corner. From this point I ran N. 55° E. 112.52 feet, could find no evidence of the 10" white oak B. T. and old fence corner was due west of the point, 29.8 feet.

I set up on the S. E. corner of Section 29; ran due north and hit the point set for the $\frac{1}{4}$ corner at 2640.94 feet. Original survey called for 40 chains (2640 feet). I then drove a 1" pipe 18" long to 6" below the road surface. From this point I set a 1" iron pipe 30.0 west beside the fence corner; also N. 55° 10 E. 115.90 I blazed a 30" W. Oak tree and drove a nail in the blaze for a witness.

I established the 1/16 corner as being 1320.47 feet south, on line from the $\frac{1}{4}$ corner so established, and 1320.47 feet north on line from the S. E. corner of said Section 29. From this 1/16 corner I set a 1" Iron pipe due west 30.0 feet, said pipe being 2.8 feet south of an old fence corner, and fence, running east from the east line of the County road, cornered at about 2' north of the 1/16 corner and 30' East, this fence ran on an angle for about 100 feet, then straightened to an east bearing, on line with the 1/16 corner established.

I then blocked out the 6.585 acre tract, by establishing the point of beginning 30 feet west and 275 feet north of the 1/16 corner; thence west at 90° angle to the section line 675. feet; thence north 425 feet; thence east 675 feet, to a point 30' west and 700 feet north of the 1/16 corner; thence south 425 to the point of beginning.

S. C. Watkins
S. C. WATKINS
Consulting Engineer

