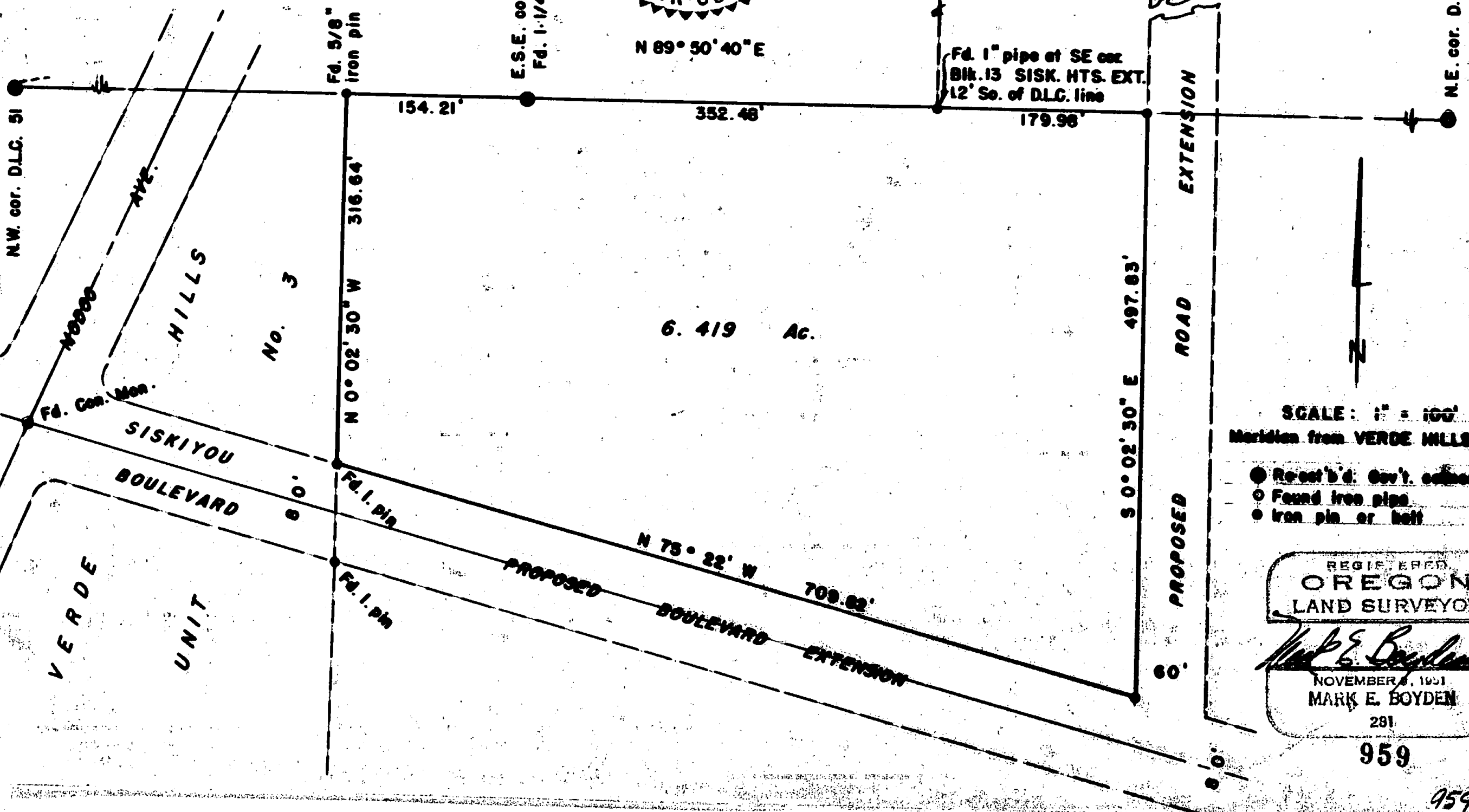
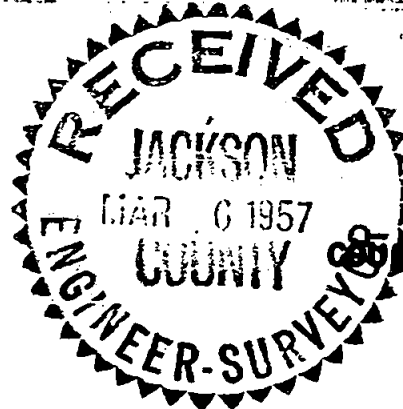


9536

Survey For  
SCHOOL DISTRICT 549-C  
Located in Sec. 29, T37SRIW, W.M.  
Medford, Oregon  
By: Mark E. Boyden  
Jan. 1957



N 89° 50' 40" E

6.419 Ac.

N 73° 22' W

SCALE: 1" = 100'  
Meridian from VERDE HILLS

- Re-set's d. Gov't. corner
- Found iron pipe
- Iron pin or bolt

REGISTERED  
OREGON  
LAND SURVEYOR

*Mark E. Boyden*

NOVEMBER 8, 1951  
MARK E. BOYDEN  
281

959

959

Survey Narrative to Comply with Paragraph 209.250,  
Oregon Revised Statutes

FOR: School District No. 549-C

PURPOSE: To monument and describe that portion of the Dr. Phipps ownership in Section 29, Township 37 South, Range 1 West, enclosed by the projections of Siskiyou Boulevard and White Oak Road.

PROCEDURE: The Northwest corner of the parcel to be surveyed had previously been monumented by this office when Verde Hills was laid out. Set a high flag on the Northeast corner of D.L.C. #51, checked the pipe at the East-Southeast corner of D.L.C. #52 for line and missed the 1" pipe at the Southeast corner of Block 13, SISKIYOU HEIGHTS EXTENSION as shown. Because of the priority of the D.L.C. Line as a property boundary, the South boundary of Block 13 was considered as an overplat.

Measured the distance between the Southwest corner of County Club Park and the centerline of Black Oak Drive (see Survey No. 683) to determine the West line of White Oak Road on the South line of Country Club Park. Then ran Southerly parallel to the East line of Block 13 to establish the East line of the parcel surveyed. Monumented the new corners with 3/4" iron bolts, using the astronomical bearing used on VERDE HILLS for meridian control.

March 1957

