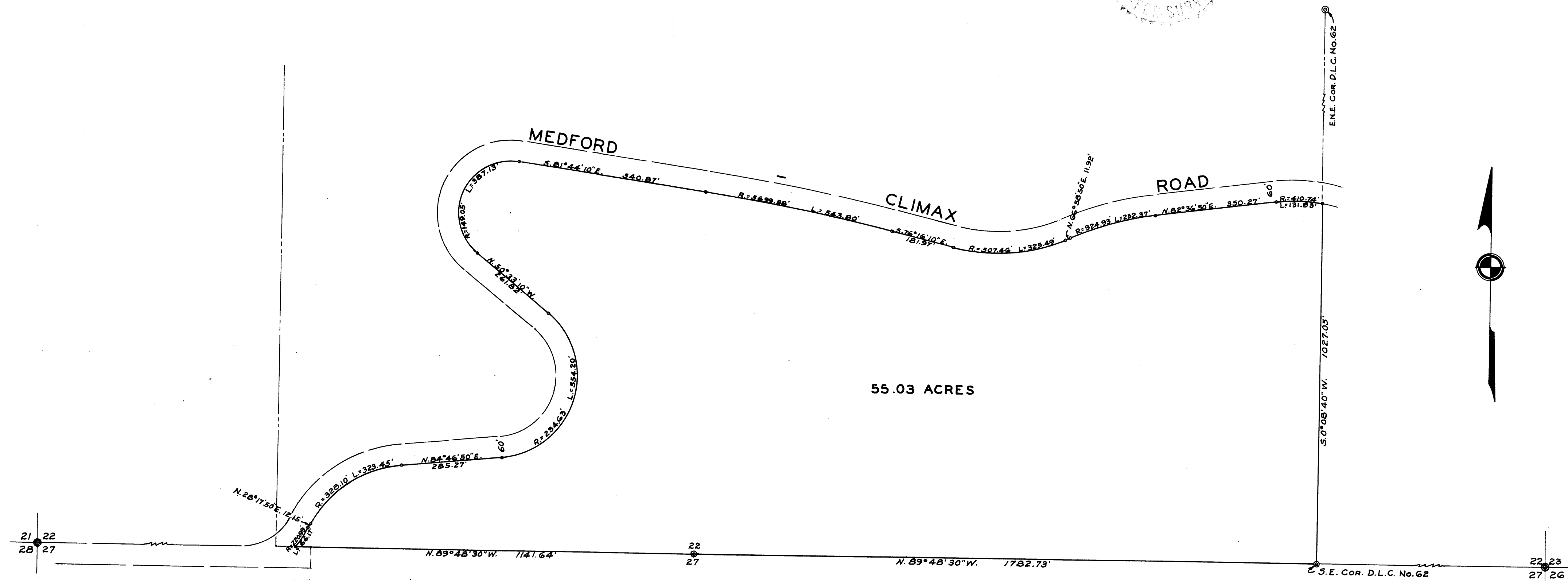
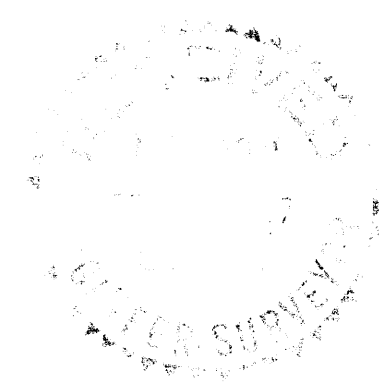


SURVEY FOR  
 BYRON COLEMAN  
 LOCATED IN SECTION 22, T.37S,R.1W.

BY: MARK E. BOYDEN  
 SEPT. 1956



SCALE :- 1" = 200'  
 • SET IRON BOLT.  
 ⊙ RE-ESTABLISHED GOV'T. CORNER.  
 MERIDIAN BY SOLAR OBSERVATION.

REGISTERED  
 OREGON  
 LAND SURVEYOR  
*Mark E. Boyden*  
 NOVEMBER 9 1961  
 MARK E. BOYDEN  
 281

Survey Narrative to Comply with Paragraph 209.250,  
Oregon Revised Statutes

SURVEY FOR: Byron Coleman

PURPOSE: To monument and describe that portion of Donation Land Claim No. 62, Township 37 South, Range 1 West lying Southerly from the Medford-Climax Road.

PROCEDURE: Traversed the South boundary of Section 22 from the re-established Southwest corner, Easterly to the re-established Southeast corner thereof, tying in the re-established 1/4 corner and the stone at the Southeast corner of D.L.C. No. 62; thence traversed North from the Southeast corner of D.L.C. No. 62 to the vicinity of the East-Northeast corner and thence West to the original "L" corner of said D.L.C. No. 62. (For additional information as to these above-mentioned corners of D.L.C. No. 62, see the re-establishment records, County Surveyor's office.) Then, from the County location map and notes, retraced the road survey, locating several old hubs and P.I.'s, proportioning out minor differences, using record deltas and degree-of-curves.

Monumented the tract with 3/4" iron bolts as shown, using a solar observation taken near the Southwest property corner to determine the bearings.

September 1956

