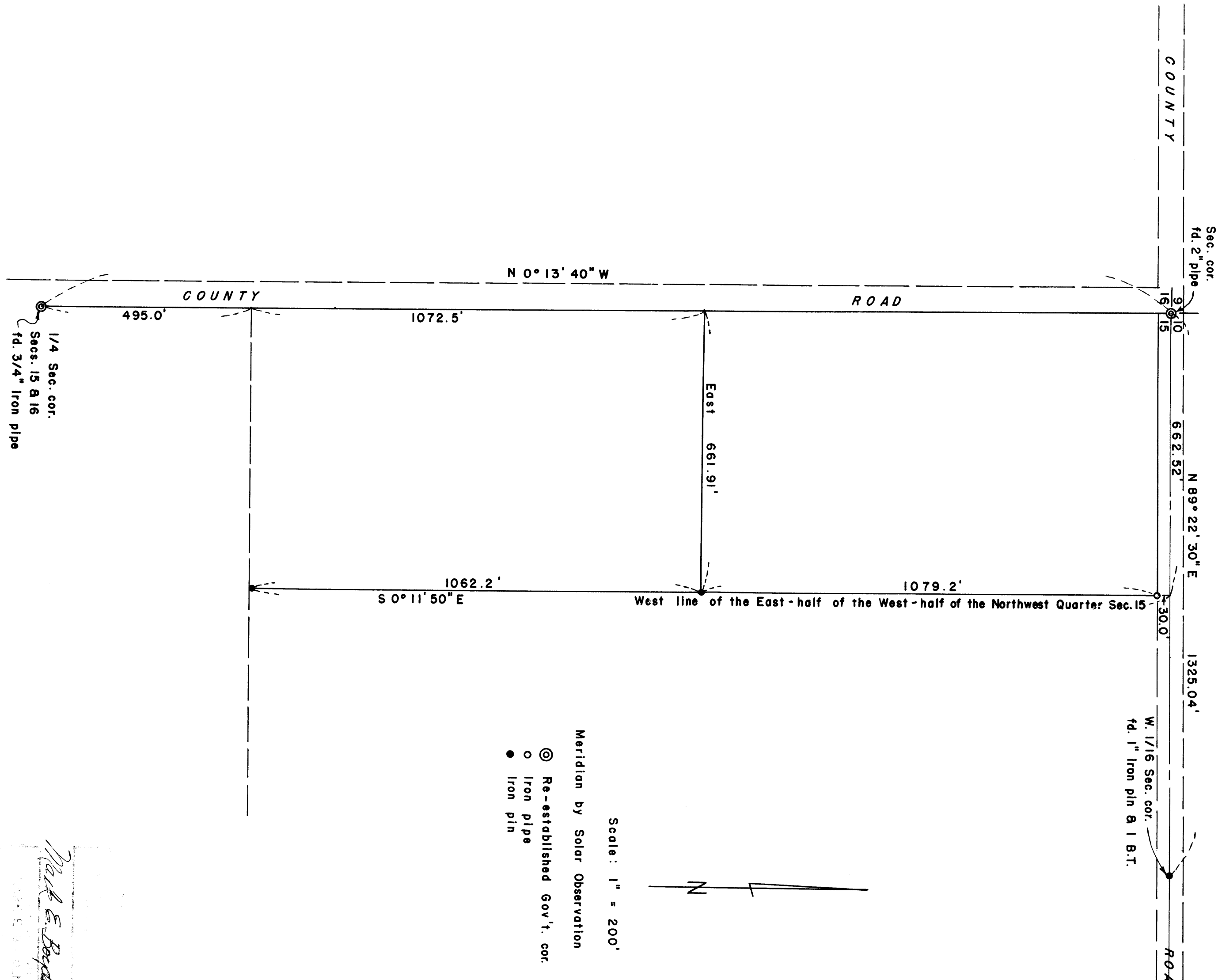
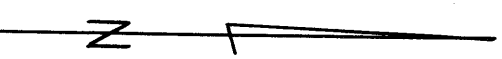


Survey For  
 FRANK L. WEST  
 Located in Sec. 15, T35SR4W., W.M.  
 By: Mark E. Boyden  
 Oct. 1956



Meridian by Solar Observation  
 ⊙ Re-established Gov't. cor.  
 ○ Iron pipe  
 ● Iron pin

Scale: 1" = 200'



*Mark E. Boyden*

Survey Narrative to Comply with Paragraph 209.250,  
Oregon Revised Statutes

FOR: Frank L. West

PURPOSE: To monument the West line of the  $E\frac{1}{2}$  of the  $W\frac{1}{2}$  of the  $NW\frac{1}{4}$  of Section 15, Township 35 South, Range 4 West, with line pins and also set the Northeast corner of West's contract ownership.

PROCEDURE: Found the West 1/16 section corner between Sections 10 and 15 set by C. Z. Boyden in 1931, the 1" pin being 33" below the present road surface. Set a  $\frac{3}{4}$ " x 30" iron pin on top of the corner pin found, from which the 22" Twin Black Oak with scribe visible bears S.  $3\frac{1}{2}^{\circ}$  E., 69.8 feet. Then ran from said 1/16 corner Westerly to the corner to Sections 9, 10, 15, and 16, establishing a point midway for the North end of the boundary to be surveyed.

Also ran from the corner to Sections 15, 16, 21, and 22 Easterly to the 1/4 corner between Sections 15 and 22, tying in points set on Recorded Survey No. 555 to theoretically enclose the West-half of Section 15.

From said information, computed the location of said interior section line and monumented same as shown on the attached map.

West's Southeast corner was not actually set, as the location of the East-West centerline of Section 15 was not determined on this survey, but a line pin was set Northerly to control the line East and West.

The Northeast corner of West's contract ownership was established according to the contract description now on file in the County Assessor's Office.

October 1956

