

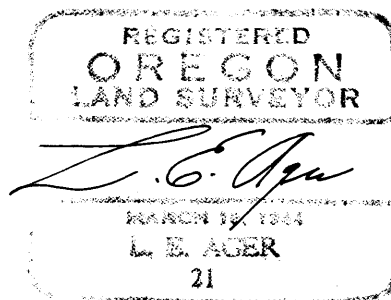
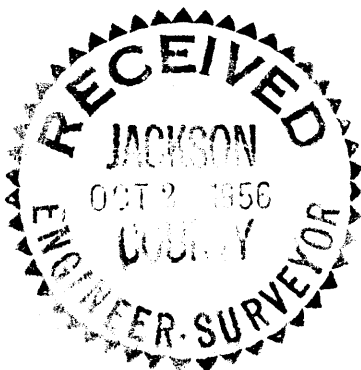
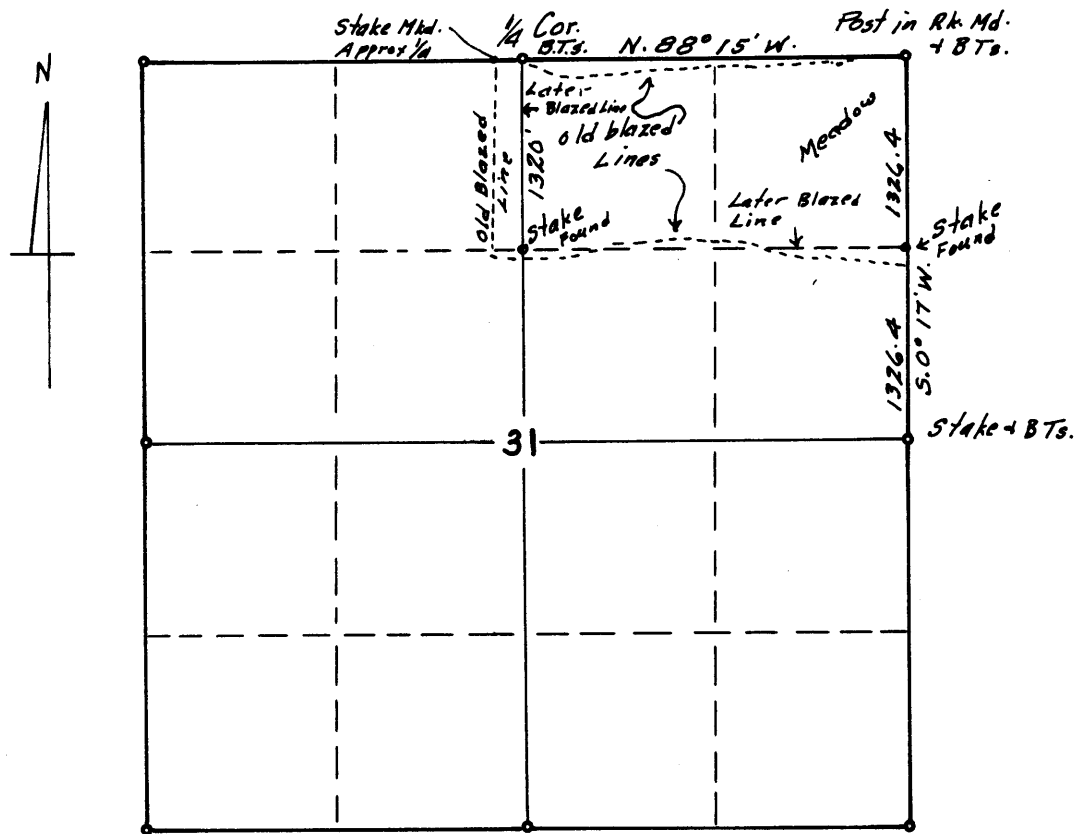
Map of Survey for
Medford Forest Products, Medford
Oregon.

Section 31, T.37 S. R. 4 E. W.M., Oregon.
Jackson County.

September 1956

Scale: 1/4" - 1 Mile

Solar bearings.



Survey narrative to comply with Section 87-330 Oregon State Law of 1947.

For: Medford Forest Products , Medford, Oregon

Purpose: To establish the true line between the Northwest corner and the North $\frac{1}{4}$ corner and line between the Northwest corner and the South $\frac{1}{2}$ corner of Section 31, T.37 S. R.4 E. W.M., Oregon and check the various blazed lines along the south line of the N $\frac{1}{2}$ of the NE $\frac{1}{4}$ and along the west line of same.

Procedure:

Began at a post set in mound of rock at the northeast corner of the Section the position of which checked for position with the field notes for bearings and distances from the bearing trees.

Ran a random line westerly following an old swamped line on a bearing of N.88°45'W. to a point 23 feet South of the north $\frac{1}{4}$ corner. thence from the N. $\frac{1}{4}$ corner I blazed a line on a true bearing of S.88°15'E. as far as the timber line extends.

From the northeast corner of the Section I ran due South and at a distance of 1326.4 feet found stake marked 1/16 cor. 7.0 feet West of this point. At a distance of 2652.8 the East $\frac{1}{4}$ corner was 13.2 feet West. It was evident the 1/16th corner was properly set for N-S. position.

From the 1/16th corner a line was blazed West on a compass variation of 17° and I did not rerun this line but followed it thru and found an older blazed line which started approx. 40 feet south of the 1/16th corner and crossed this later blazed line in two places and extended on west of the stake marked 1/16th corner at the end of the later blazed line. From the stake marked 1/16th corner a line was blazed north Var. 19° to the North $\frac{1}{4}$ corner a distance of 1320 feet. As the timber had been cut to these lines that I followed thru and no timber being involved on this relog job I did not attempt to make a resurvey of the south and west lines of the N. $\frac{1}{2}$ of the NE $\frac{1}{4}$. The main concern was whether the older blazed lines which extended into the unlogged areas were correct or not. An older blazed line began at a point approx. 60 feet west of the N. $\frac{1}{4}$ corner at an approx. $\frac{1}{4}$ corner and ran south on a variation of 17° to an intersection with an older blazed E-W. line.

