

Map of survey for

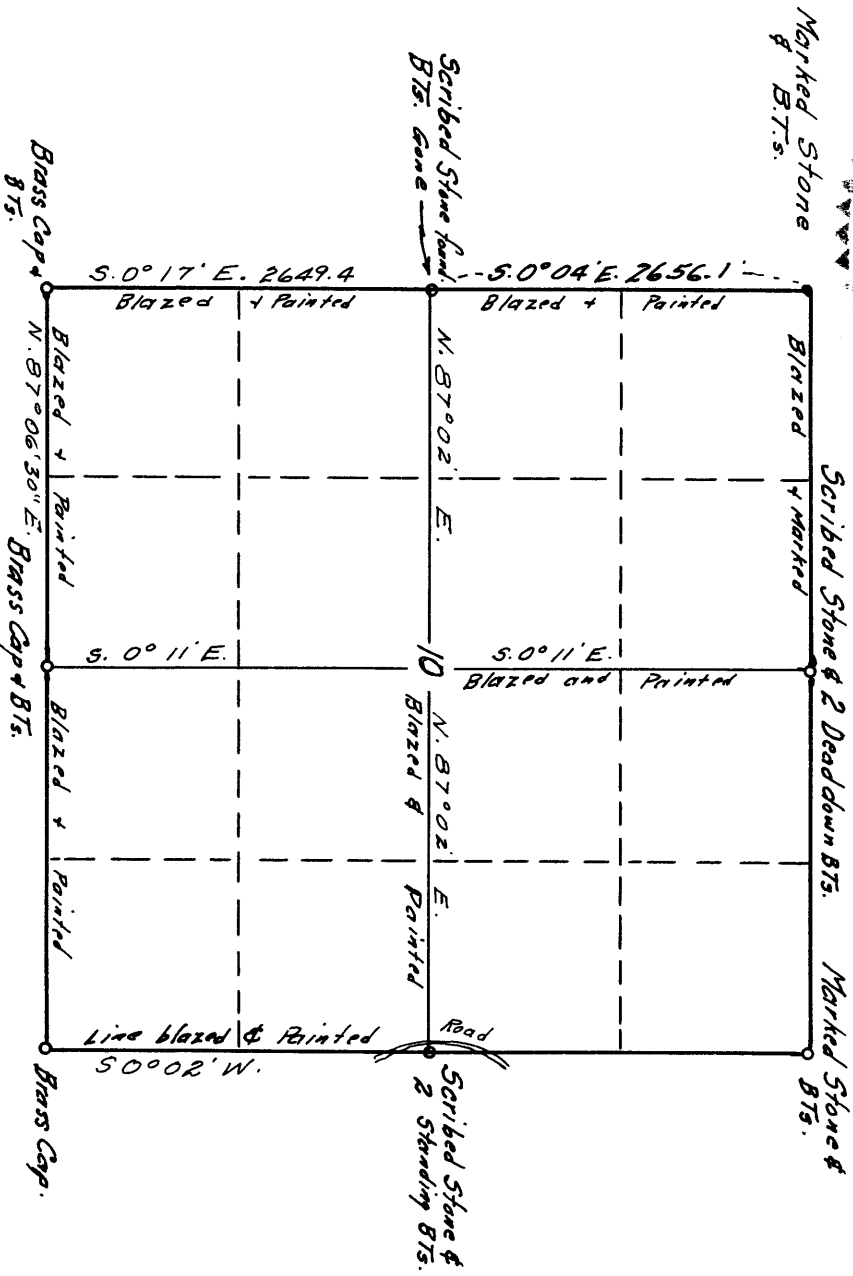
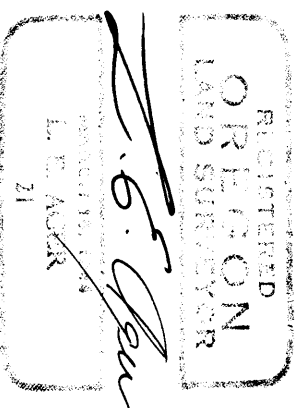
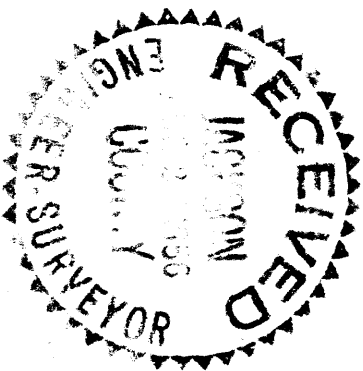
Johnston & Plumley Inc., Medford, Oregon.

Section 10, T.41 S. R. 3 W., M.M., Jackson County, Oregon.

Surveyed: June, 1956

Solar bearings.

Scale: 4" = 1 Mile



Survey narrative to comply with Section 87 - 330 Oregon State Law of 1947.

For: Johnston & Plumley Inc. Medford, Oregon.

Purpose: To establish the boundaries of the West Half and the Southeast Quarter of Section 10, T.11 S., R. 3 W., W.M., Jackson County, Oregon.

Procedure:

I ran South on random line from the northwest corner of Section and chained this line setting chaining points thereon to an iron pipe with brass cap marking the Southwest corner of this Section. The west $\frac{1}{4}$ corner was not in evidence on the random run as the witness trees were gone. After a careful search I found a stone scribed $\frac{1}{4}$ which was buried under debris in a circle of small stones and from this I blazed and painted with silver paint the true line from this to the northwest and southwest corners according to the courses and distances shown on this map. The reason for the paint is to distinguish between the random and other blazed lines in this area.

From the northwest corner I ran a random & true line on the north line of the Section to a stone at the north $\frac{1}{4}$ corner thereof. the true bearing from these points computed to be N.86°43'E. which shows this Section out of true East-West. The B.Ts. at this $\frac{1}{4}$ corner are dead and down.

Ran South from the N. $\frac{1}{4}$ Corner and intersected the south line of the Section 17 feet West of the pipe & brass cap marking the south $\frac{1}{4}$ corner. The computed course of true line being S.0°11'E. I returned to the N. $\frac{1}{4}$ corner and blazed and painted the true line to a point approx. $\frac{1}{2}$ mile South. From the West $\frac{1}{4}$ corner I ran a random line on a bearing of N.86°43'E. setting a stake at the intersection of this line and the N-S. $\frac{1}{4}$ line continuing on to intersect the east line of the section at a point 29 feet north of the east $\frac{1}{4}$ corner. From the East $\frac{1}{4}$ corner I ran S.87°02'W. on true line to intersect the true N-S $\frac{1}{4}$ line at which point I set a post.

Began at the East $\frac{1}{4}$ corner and ran South intersecting the south line extended at a point 2.5 feet East of the pipe with brass cap marking the southeast corner of the Section. This line was thru dense brush and no timber involved between this and the true line I did not rerun on true line. Marking only that portion where the timber line extended.

The south line of the Section had been more recently swamped and well marked. I began at the southwest corner of the Section sighting a course of N.87°08'E. along the center of the swamped line and carried this course to a point 1.2 feet south of the south $\frac{1}{4}$ corner and as there was no timber involved along this line I did not rerun on true line. From the South $\frac{1}{4}$ corner going East there was no timber near the line already established so I reblazed and painted the brush bordering this that it may be readily followed.

