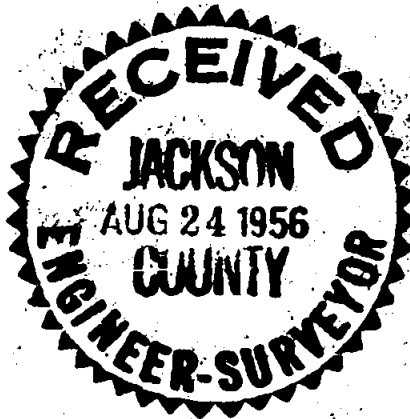
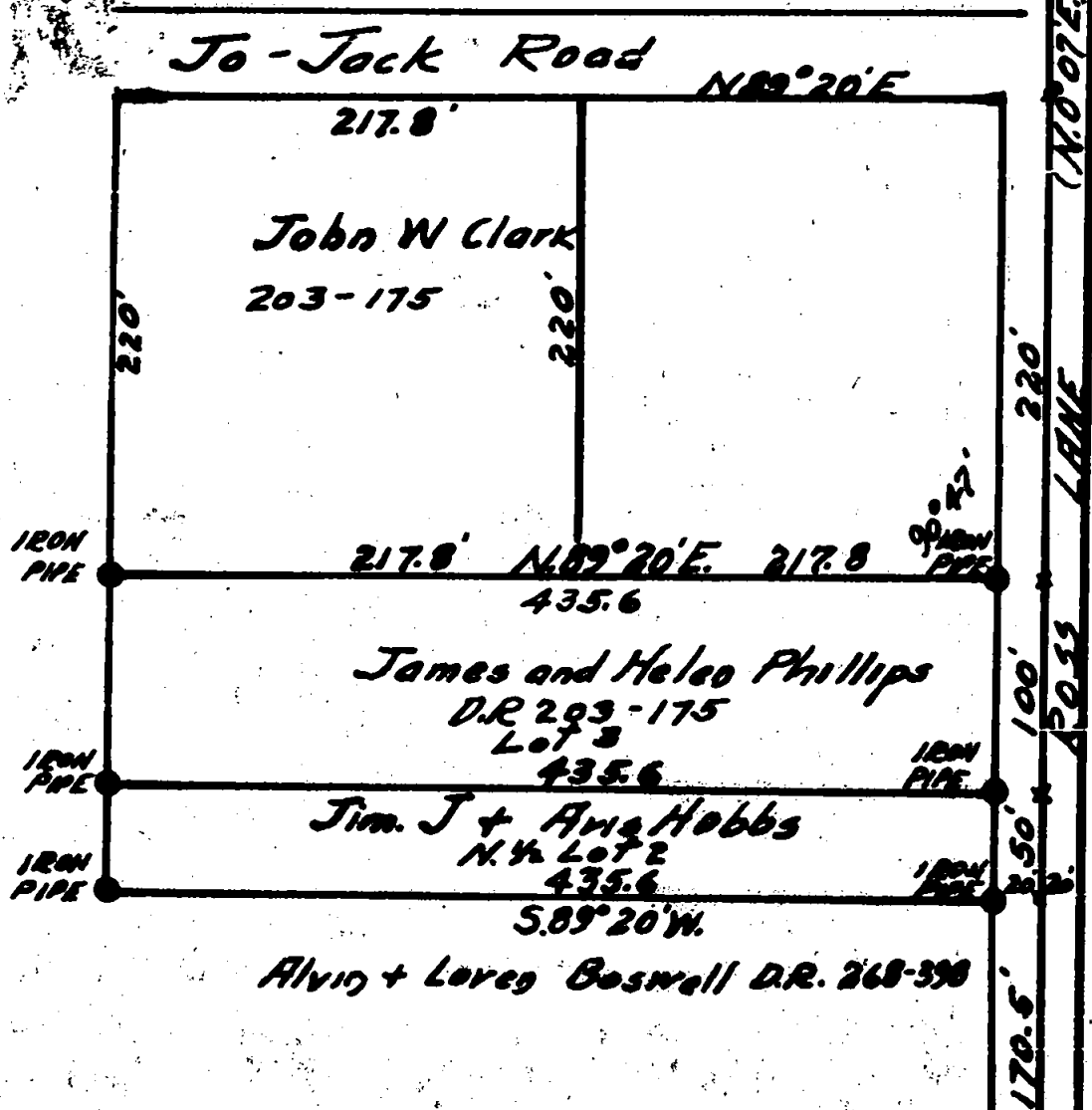


Found
Sight 879
N.E. Cor. D.L.C. 72



SURVEY
 for
James Phillips and J.J. Hobbs
Lots 2 + 3 To Jack Subdivision
Madford, Oregon
Scale 1" = 100' Hugh C. Ingble
Aug. 1956 Civil Engineer

Found
 E.S.E. Cor. of
 E 1/4 D.L.C. 72
 T. 37 S. R. 2 W.



879

NARRATIVE REPORT

Survey For

James Phillips & J. J. Hobbs

Medford, Oregon

Sec. 26, T. 37 S., R. 2 W.

Purpose of Survey:

To establish boundaries and common property line of two corners in Lots 2 and 3 of Jo Jack Subdivision.

Procedure:

The East Southeast corner of Donation Land Claim #72 in T. 37 South Range 2 W. of W. M. was found established and Northeast corner of the D. L. C. was found and sight established for bearing of record. Record measurements were made North from the East Southeast corner of D. L. C. #72 in accordance with descriptions and plat and property lines and corners established by description.

Back fences quite closely with the survey.

Hugh C. Ingle
Civil Engineer

