

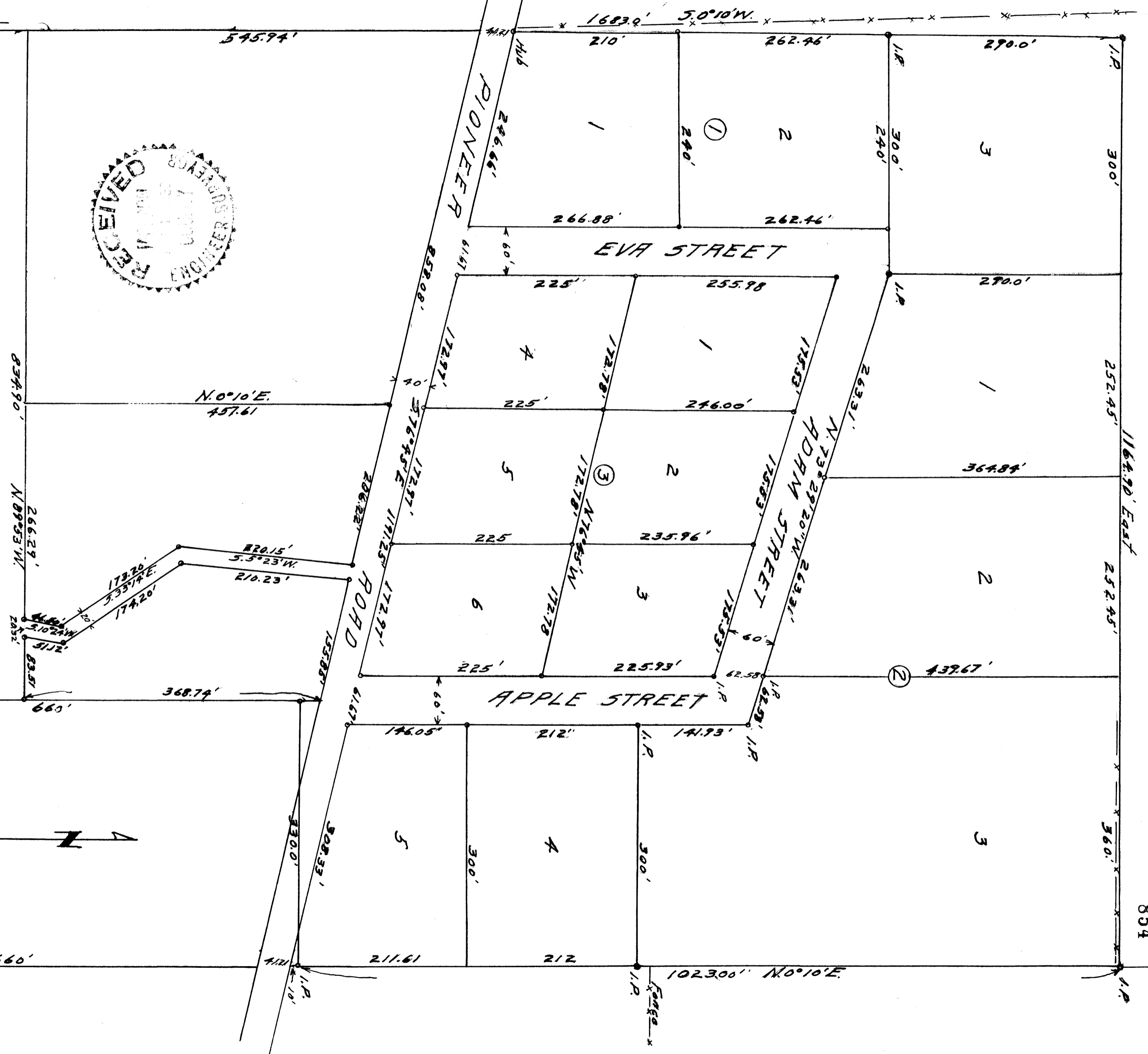
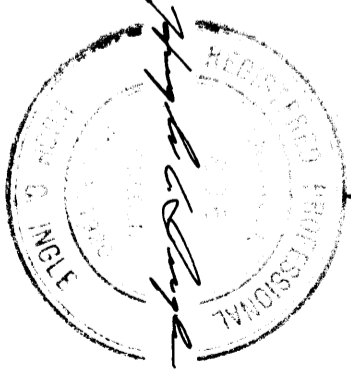
854

50ft to D.L.C. #47
S.W. Cor. (Found)

834.90' N 89°53'W
South Line of D.L.C. #47

S.E. Cor. D.L.C. #47 (Found)

PLAT OF
ADAMS ACRES
IN D.L.C. #47 T.38 S. R.2 W.
JACKSON COUNTY, ORE.
5946 1/2 1/100'
Hugh C. Long
Civil Engineer



Sight
to NE
Cor. D.L.C.
#47

NARRATIVE REPORT.SURVEYPortion of Donation Land Claim # 47

in
 T. 38 S. R. 2 W. W. M. *Sec. 11*
Ass Adams

Purpose of Survey.

To establish outside boundary of land of record, and to subdivide into parcels and establish their boundaries in accordance plan of owner.

Procedure.

East line of Donation Land Claim # 47 was established by lining between the Northeast and Southwest corner and the south line established between the Southeast and Southwest corners, all corners being found.

Outside boundaries were established by description distances, The fence line at the northeast corner was found to be 5 feet south of distance, but agreed at the northwest corner. Other fences were on irregular alignment, but followed the general course of the survey.

The tract North of Pioneer Road was divided into smaller tracts and an access road reserved. South of road the land was run out according to description of tracts sold.

Bearings were determined astronomically.

