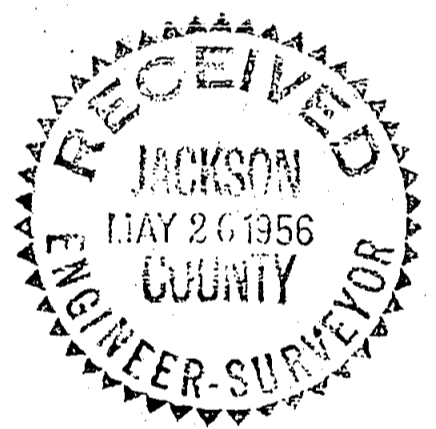
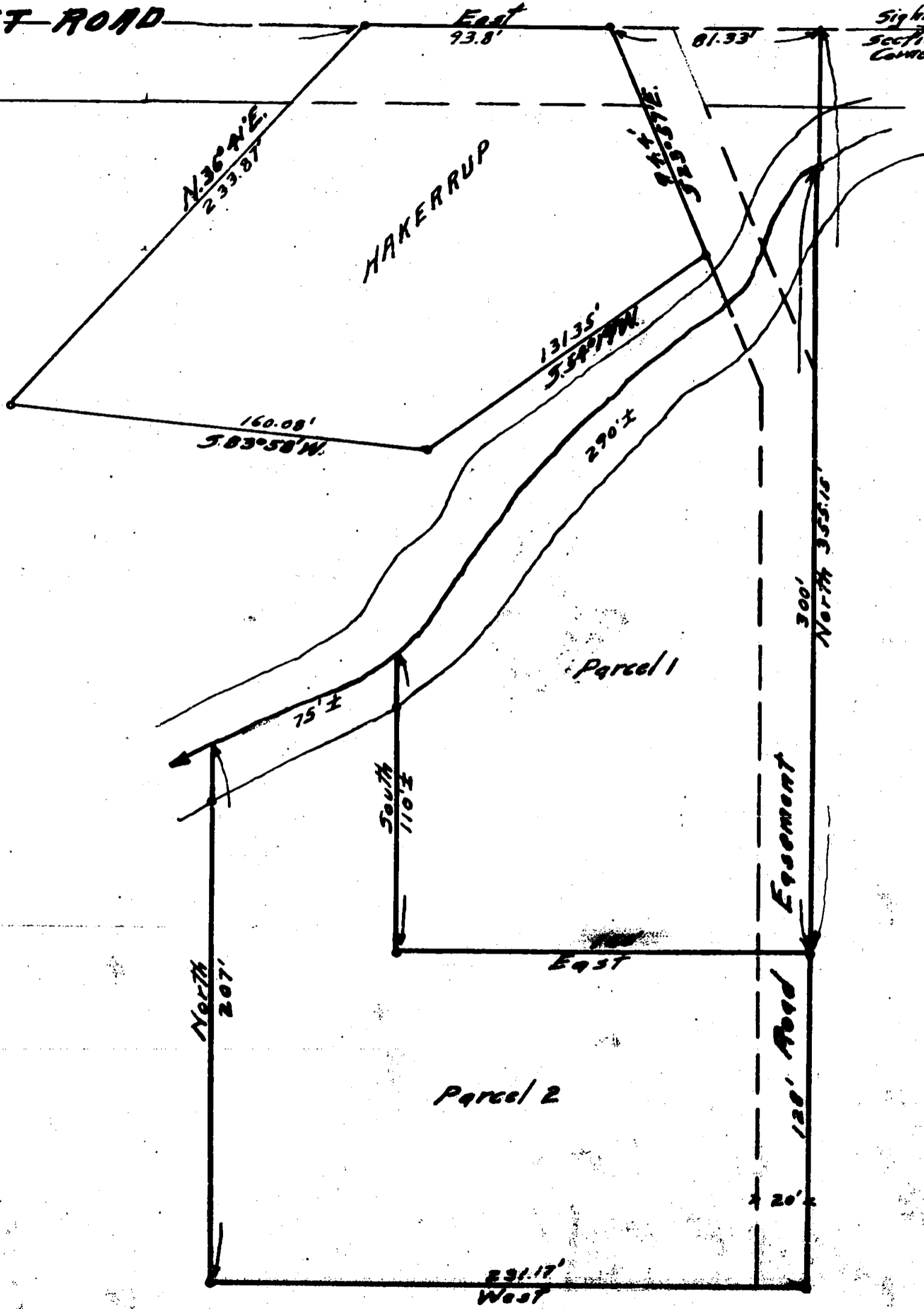
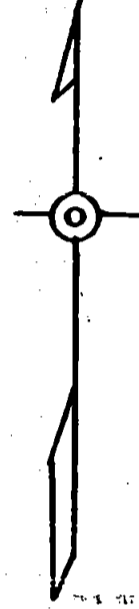


29 1/4 Cor. Found
32

RED BLANKET ROAD

Sight
section
corner

N



SURVEY MAP
Portions of NW 1/4 NE 1/4
Sec. 32 T. 32 S. R. 3 E. W. M.
Scale 1" = 50' Hugh G. Ingle
April, 1956 Civil Engineer.



NARRATIVE REPORT

SURVEY

Portion of N. W. $\frac{1}{4}$ N.E. $\frac{1}{4}$

Section 32, T. 32 S. R. 3 E. W. M.

Purpose of Survey

Survey was made to locate boundaries and establish corners of two parcels of land for descriptive purposes.

Proceedure.

The North $\frac{1}{4}$ corner and the Northeast section corner of Section 32 were found and the North line of Section 32 was established and chained East from the quarter corner the record distance of property description. This distance and the angle South agreed with the long established fence line bordering the East line of the property.

The two parcels were located west of Cool Creek center line and in accordance with owners wishes. Points were set at corners of parcels and offset on the Creek bank for Creek boundary.

