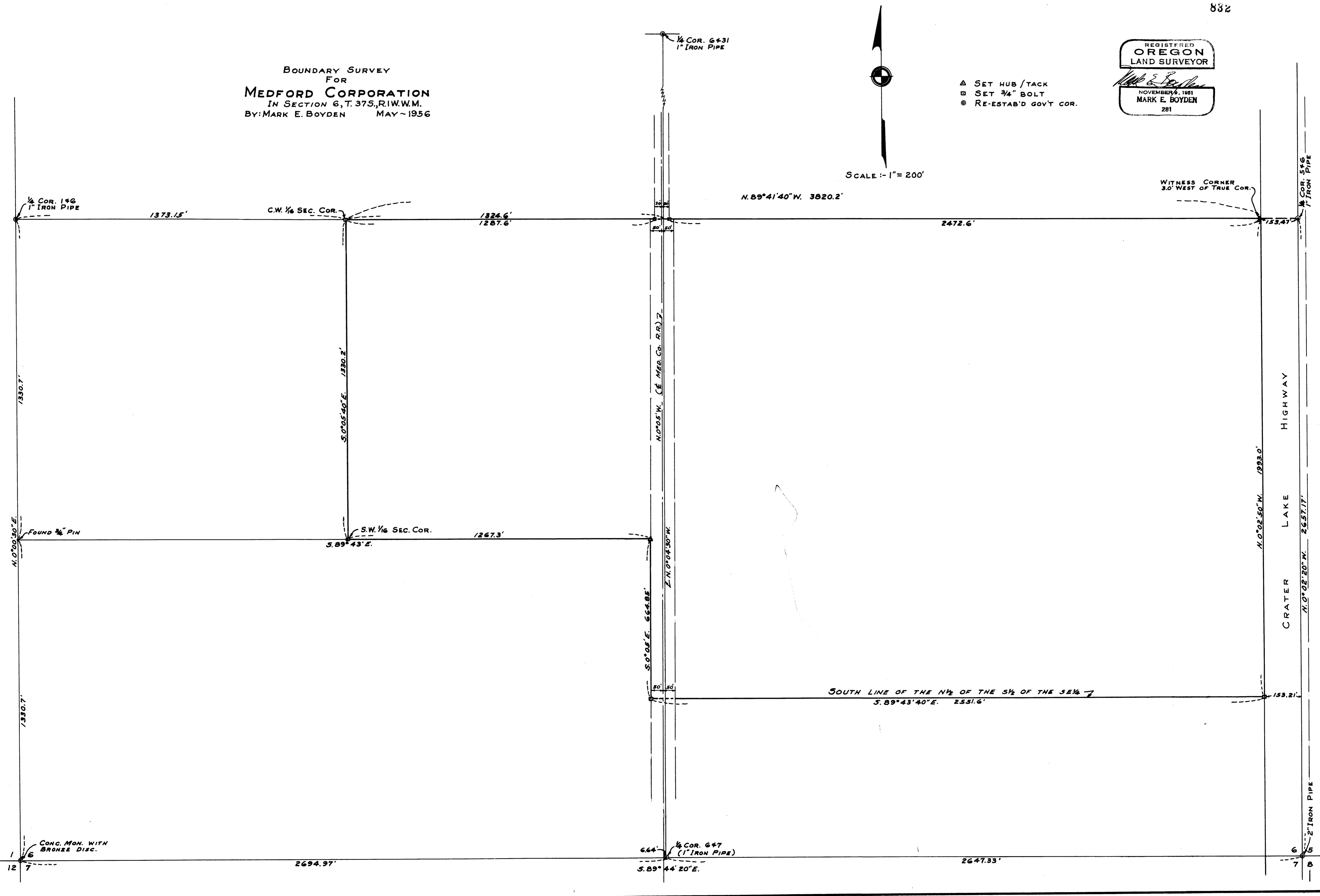


BOUNDARY SURVEY  
FOR  
**MEDFORD CORPORATION**  
IN SECTION 6, T. 37S., R. 1W., W.M.  
BY: MARK E. BOYDEN MAY ~ 1956

REGISTERED  
**OREGON**  
LAND SURVEYOR  
*Mark E. Boyden*  
NOVEMBER 9, 1951  
**MARK E. BOYDEN**  
281

- △ SET HUB / TACK
- SET 3/4" BOLT
- ⊙ RE-ESTAB'D GOV'T COR.

SCALE: 1" = 200'



Survey Narrative to comply with Paragraph 209.250,  
Oregon Revised Statutes

FOR: Medford Corporation

PURPOSE: To monument the outside boundaries of a tract recently acquired by the Medford Corporation and located in Section 6, Township 37 South, Range 1 West.

PROCEDURE: All Government corners of said Section 6, excepting those corners on the West boundary, were obliterated or questionable at the beginning of this survey.

From traverse lines run and ties to previous surveys, coordinated the location of the following surrounding officially re-established Government corners:

In Township 36 South, Range 1 West:

Northeast corner Section 31  
Southwest corner Section 31 (Township corner)  
Southeast corner Section 32

In Township 37 South, Range 1 West:

Southwest corner Section 6  
South 1/4 corner Section 5  
Southeast corner Section 7

From this information, found monumented evidence to officially re-establish the Northeast and Southeast corners and then by single proportionment, establish the missing 1/4 corners of said Section 6 (see re-establishment records).

Established the center 1/4 corner point by intersection of the lines from opposite 1/4 corners which center point was intervisable to all 1/4 corners. Then protracted the remainder of the Section, monumenting these corners shown on the attached map.

The centerline of the Medford Corporation railroad was established as the same is now located, midway between the tracks at the North and South boundaries of said Section 6.

The West boundary of the Crater Lake Highway was established from iron monuments found East and West from the Oregon State Highway Department centerline P.O.T. Stations 2223+59.06 and 2237+00.

FOR: Medford Corporation - page 2

All corners were referenced so that the owner could  
concrete the iron bolts to perpetuate their location.

Meridian control for this survey is that used on record  
Survey #447.

May 1956

