

Survey For  
 ELK LUMBER COMPANY  
 &  
 WALDO NYE  
 Located in Secs. 13, 14, 15, 22, 23 & 24  
 T. 32 S. R. 3 E., W. M.

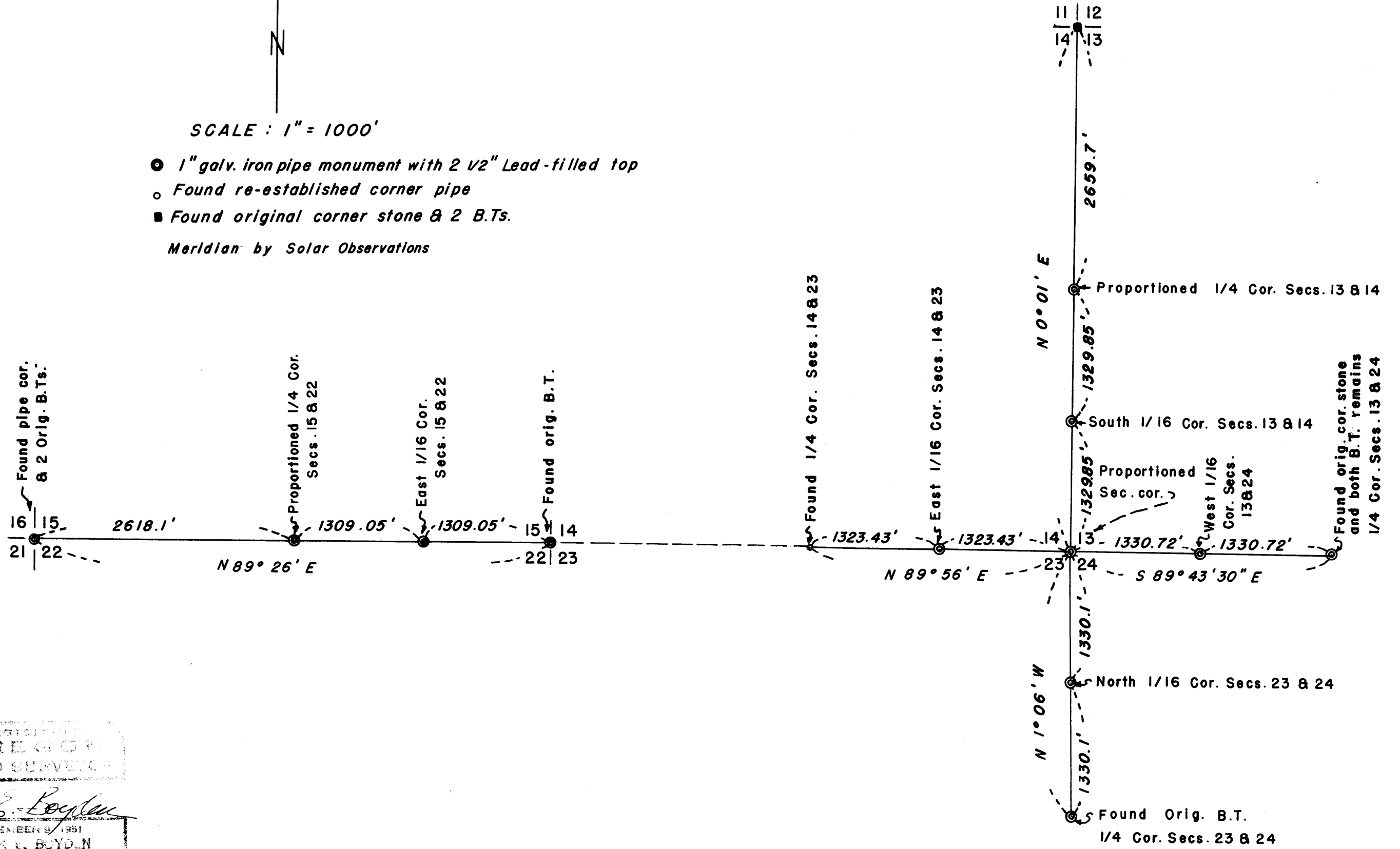
By : Mark E. Boyden  
 Feb. - Apr. 1956



SCALE : 1" = 1000'

- 1" galv. iron pipe monument with 2 1/2" Lead-filled top
- Found re-established corner pipe
- Found original corner stone & 2 B.Ts.

Meridian by Solar Observations



REGISTERED  
 OREGON  
 LAND SURVEYOR

*Mark E. Boyden*

NOVEMBER 9, 1951  
 MARK E. BOYDEN

## Survey Narrative to comply with Paragraph 209.250,

## Oregon Revised Statutes

FOR: Elk Lumber Company and Waldo Nye

PURPOSE: To re-establish lost Government corners and establish 1/16 Section corners in Sections 13, 14, 15, 22, 23, and 24, Township 32 South, Range 3 East.

PROCEDURE: Traversed those boundaries shown with solid lines on the attached map with transit-chain, computing and setting the corners by proportionate measurement.

All monuments set were of the standard Elk Lumber Company type, being 1" galvanized iron pipe with 2 1/2" lead-filled top stamped for the particular corner represented.

Meridian was obtained by Solar Observations near the North 1/4 corner of Section 15 and near the Southeast corner of Section 14.

For further information on the corners set, see the official re-established and established corner records at the County Surveyor's Office.

April 1956

