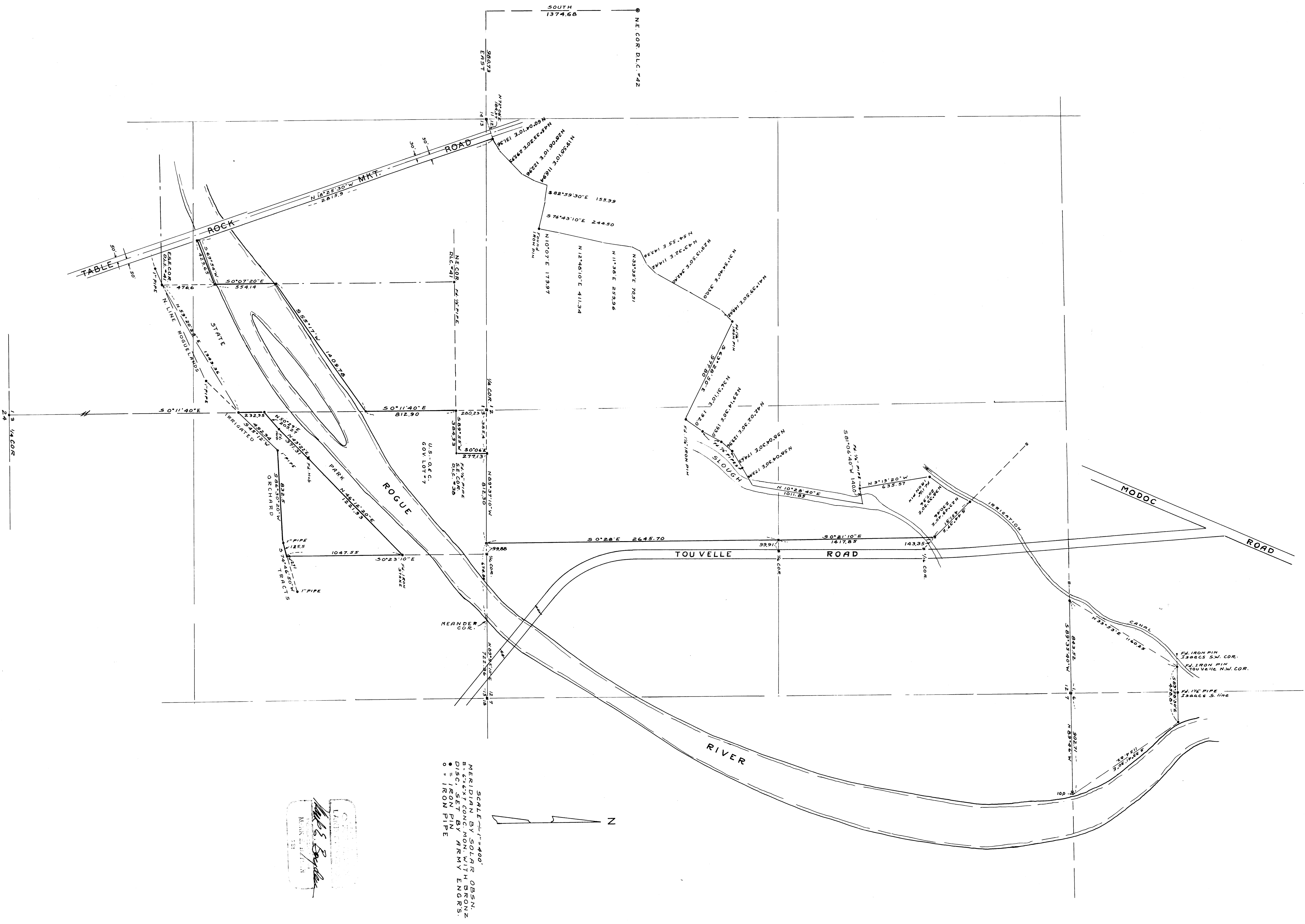


F.L. TOU VELLE ESTATE
 LOCATED IN SECS. 1, 12 & 13, T. 36 S., R. 2 W., W.M.
 AND SEC. 6, T. 36 S., R. 1 W., W.M.
 M.E. BOYDEN
 MAR. 1956



SCALE 1" = 400'
 MERIDIAN BY SOLAR OBSN.
 DISC. SET BY ARMY ENGRS.
 ○ = IRON PIN

M.E. Boyden
 M.E. BOYDEN
 MAR. 1956

Survey Narrative to comply with Paragraph 209.250,

Oregon Revised Statutes

FOR: Trustees of F. L. Tou Velle Estate

PURPOSE: To survey and monument the F. L. Tou Velle property located in Sections 1, 12, and 13, Township 36 South, Range 2 West and Section 6, Township 36 South, Range 1 West.

PROCEDURE: Commenced at the corner to Sections 11, 12, 13, and 14, Township 36 South, Range 2 West and retraced the previously surveyed Northwesterly boundary of said property where all monuments called for in the description were found. Since boundary follows physical lines such as ditches and canals, only main control points had been monumented. The intermediate courses and distances were proportioned coordinately to compensate for minor errors developed by this re-tracement.

The point of intersection of the above described boundary with the Westerly boundary of the Camp White military reservation was established using the concrete monuments with bronze disks as set by the Army Engineers as control for said Camp White boundary. Then retraced this Camp White boundary Southerly to the South line of said Section 12.

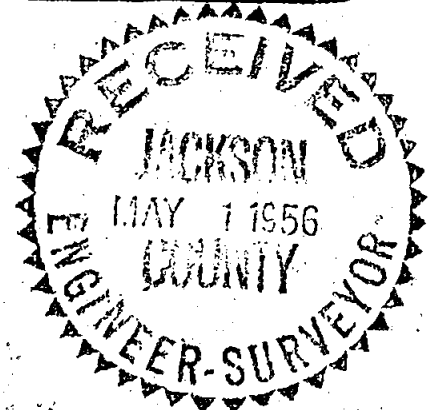
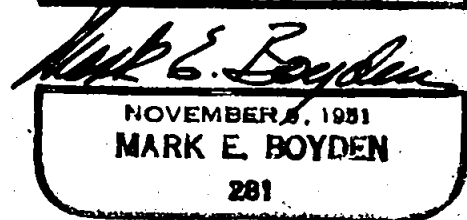
The North and South centerline of said Section 13 was established and the Southeast corner of D.L.C. No. 38 and Northeast corner of D.L.C. No. 41 were recovered (see Re-establishment Record). The North Northwest corner of Government Lot 7 as set by Deputy County Surveyor A. T. Brown, had been destroyed and was replaced from the $1/4$ corner to Sections 12 and 13. At a point on the Northerly bank of Rogue River and on the centerline of Section 13, set a point, also set the West Northwest corner of Government Lot No. 7 at the point of intersection of said centerline of Section 13 and the South boundary of D.L.C. No. 38. From the above mentioned point on the Northerly bank of Rogue River, traversed downstream along said river bank to a point on the East boundary of D.L.C. No. 41, then set a point on the South bank of the river and on the East boundary of D.L.C. No. 41 and traversed downstream to the Northeasterly boundary of Table Rock Market Road, then along the road Northwesterly to close.

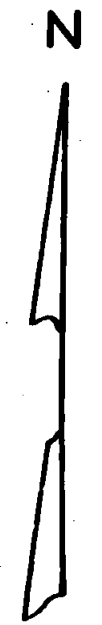
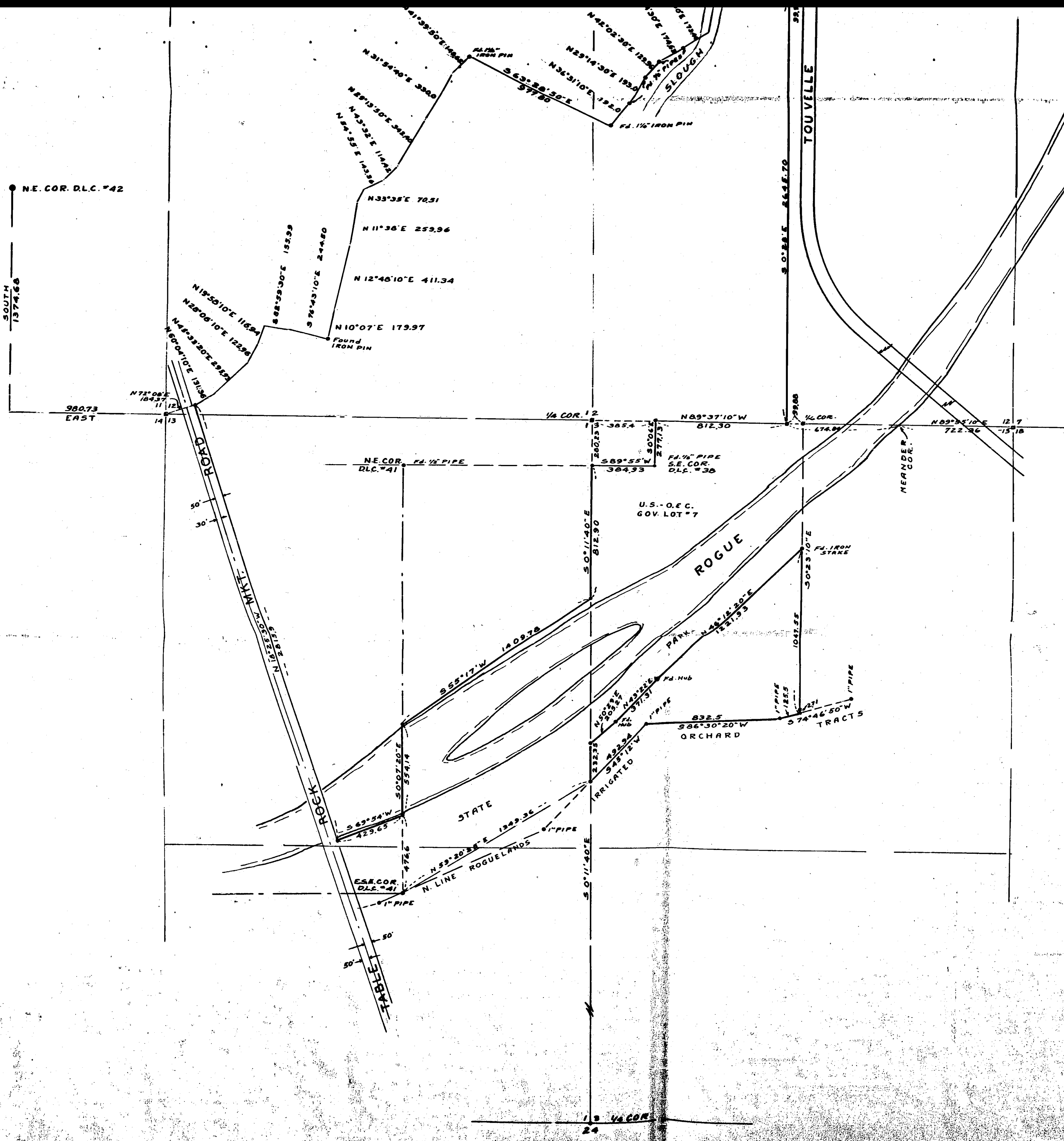
The tract South of Rogue River was controlled on the Northerly boundary by wooden hubs with tack found along the boundary of the State Park and the iron stake at the ^{North} ~~South~~ east corner, the Southerly boundary by 1" iron pipes found being the Northerly boundary of Roguelands Irrigated Orchard Tracts, the East boundary by concrete monuments with bronze disks set by Army Engineers, and the West boundary is the centerline of Section 13.

The tract in Sections 1 and 6 was controlled on the Southerly boundary by concrete monuments with bronze disks set by Army Engineers, on the North boundary by an iron pin and pipe set by this office for the division line between the Isaacs and Tou Velle properties, the West boundary is the toe of slope of a canal bank and the East boundary the bank of Rogue River.

All monuments set or found are shown on the map to accompany this report.

April 13, 1956





SCALE 1" = 400'
 MERIDIAN BY SOLAR OBSN.
 B. 6"x6"x1" CONC. MON. WITH BRONZ
 DISC. SET BY ARMY ENGR'S.
 ● = IRON PIN
 ○ = IRON PIPE

REGISTERED
OREGON
 LAND SURVEYOR
Mark E. Boyden
 NOVEMBER 3 1951
 MARK E. BOYDEN
 281