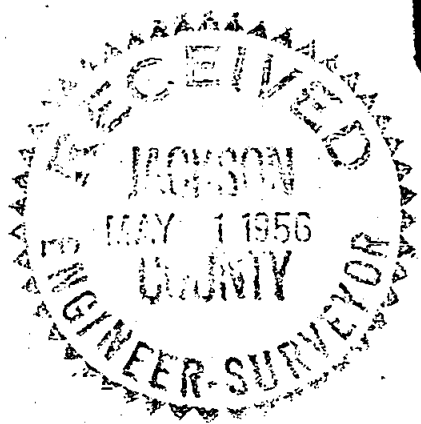


9  
1/4 Cor Nail in fc post  
2 B.T's  
16

### SURVEY FOR MR JOE WHIPPLE, MEDFORD OREGON. PROPERTY LOCATED IN Section 16 & 15. T. 35S. R. 1W. (W.M.) JACKSON COUNTY, OREGON

COMPLETED APRIL 1956 Scale 1" = 400'  
Bearings from Solar Observations  
State Highway Right of Way established from Station pins & posts.

REGISTERED  
OREGON  
LAND SURVEYOR  
*L. N. Dow*  
MAY 6. 1949  
L. N. DOW  
251

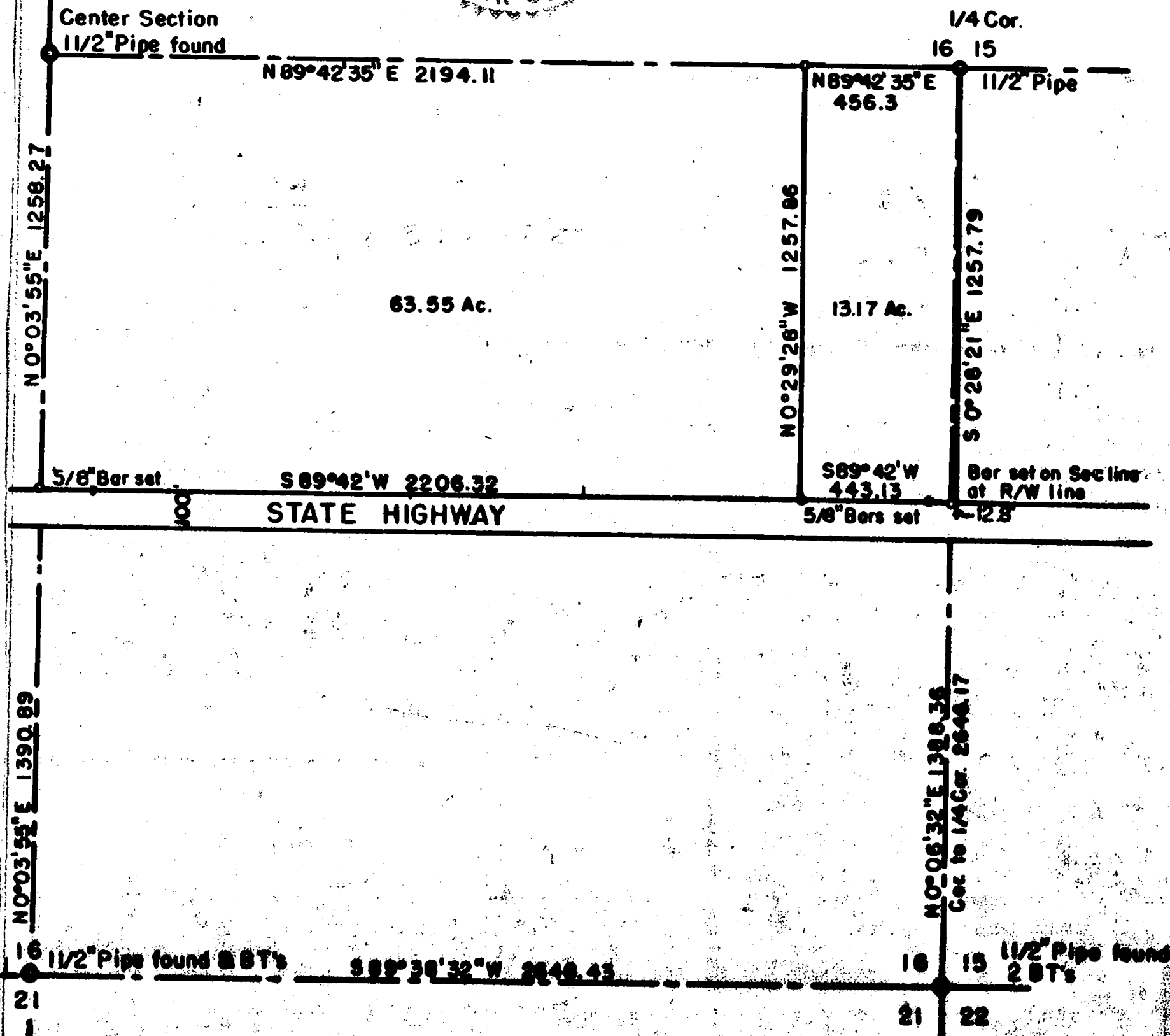


N 0° 05' 55" E 2650.41

N 0° 03' 55" E 1258.27

N 0° 03' 55" E 1390.89

N 0° 06' 32" E 1390.36  
Cor to 1/4 Cor. 2646.17



16 1/2" Pipe found & B.T's

15 1/2" Pipe found & B.T's

Written narrative to accompany plat for survey No. 812

Survey for Mr. Joe Whipple, Medford, Oregon.

Location of Survey in Sections 15 and 16 Township 35 South  
Range 1 West, Jackson County, Oregon.

Survey completed in April 1956.

Procedure, A record search was made and all field notes copied for location and bearing trees to all corners in and around Section 16. Also no filed surveys available in this area.

The next event was to make a field trip to the area. We located the 1 1/2" pipe at the quarter corner (south) to sections 16 and 21. The section corner and Bearing trees for sections 15, 16, 21 & 22, the 1/4 section corner; a 1 1/2" pipe corner corners to sections 15. & 16. We then found many station reference pins for the right of way for the Sams Valley State Highway and set up a base line from approximately the east line of section 16 for one half mile to the center of section 16. We then triangulated the 1/4 corner on the south line of section 16, triangulated the tie for the 1/4 corner on the east line of section 16; ran a traverse tie to the corners 15, 16 21 and 22, and a traverse tie to the 1/4 corner on the north line of section 16, then by splitting the distance we found a 1 1/2" pine that had been set previously by someone for the center of section 16. This point proved very acceptable.

We then coordinated all information to date. Next we set a 5/8" x 30" Bar on the section line at the intersection of the North line of the Sams Valley State Highway, we then set a 5/8" x 30" Bar on the intersection of the centerline of the section with the north line of the state highway; we then set 5/8" by 30" bars on the west line of the 13.17 acre tract as shown on the accompanying plat.

REGISTERED  
OREGON  
LAND SURVEYOR

*L. N. Dow*

MAY 6, 1949  
L. N. DOW  
251

