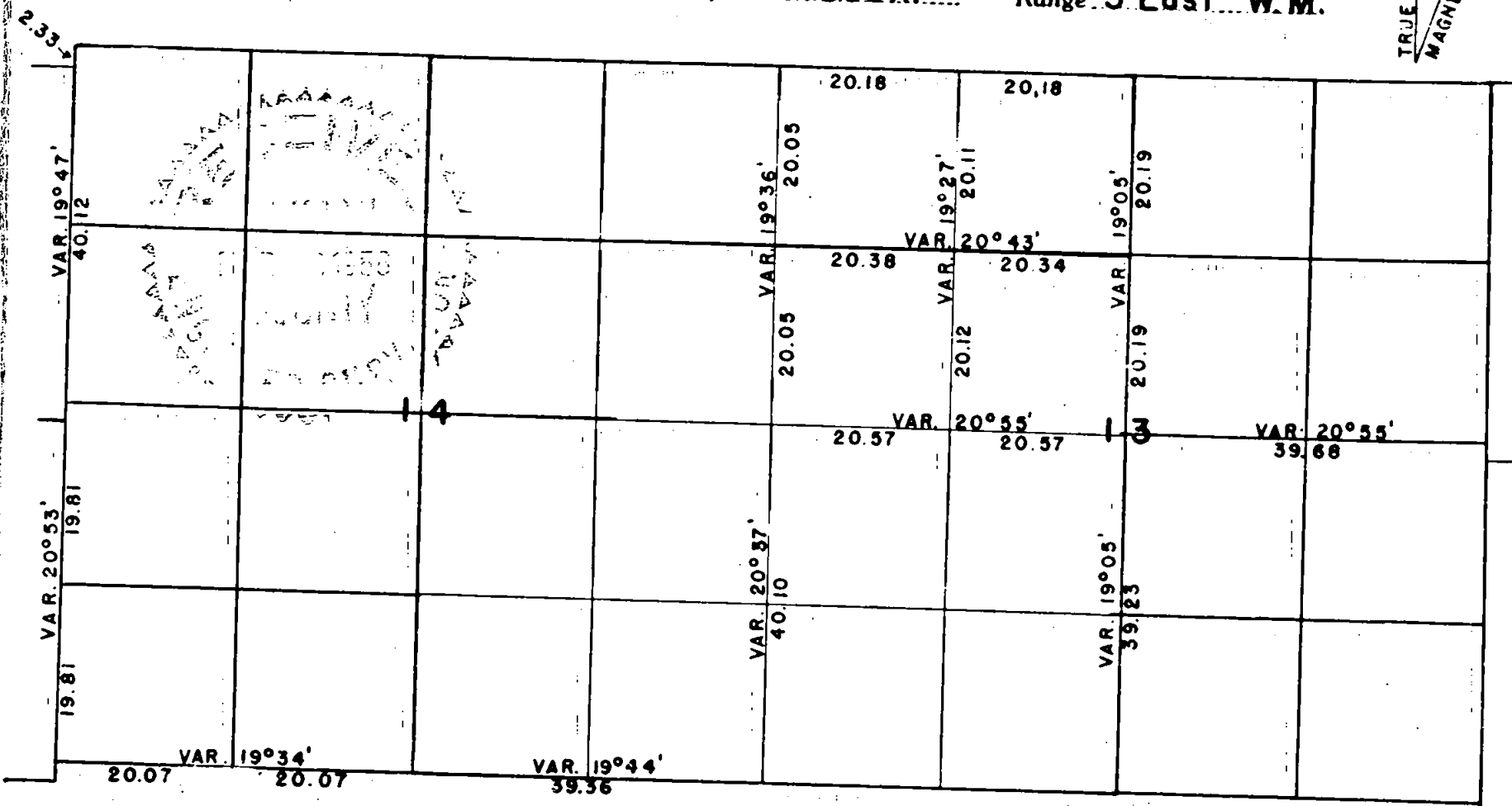
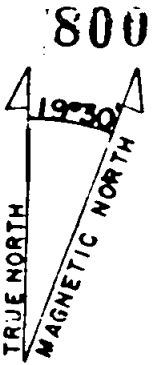


WEYERHAEUSER TIMBER COMPANY

Section 13 & 14 Township 40 South Range 3 East W.M.



The below described survey of Sections 13 and 14, Township 40 South, Range 3 East, W.M., was made by Chief of Party A. L. Moore, C. H. Hammersley, E. Kulosa, L. M. Creedican, and George Kilen of Weyerhaeuser Timber Company, commencing on January 24, 1956, and ending on February 15, 1956. Equipment consisted of four inch Kieffel and Esser staff compass, three chain topographic tape, and topographic hand level.

At the west 1/4 corner of said Section 14, we found a scribed stone, post, cruiser marks, and tag.

We further perpetuated this corner by driving a 3/4" OD x 30" iron pipe and witness nails in the following trees:

Examined 19

By

Sections 13 and 14,
Township 40 South,
Range 3 East, W.M.

14" YP N 34° W 33.6 feet
24" YP S 85° W 15.7 feet

Thence continuing north on true line a distance of 20.19 chains to the north quarter corner of said Section 13.

We then established the west 1/16 corner on true line midway between the west 1/4 corner and center of Section 13, which is 20.57 chains from each of said quarter corners. We established this corner by erecting a squared cedar post, and driving a 3/4" OD x 30" iron pipe and witness nails in the following trees:

8" W.F. N 81° W 19.7 feet
11" W.F. S 77° E 14.1 feet

Beginning at the west 1/16 corner said Section 13 we ran north on random line, variation 19°10' E, a distance of 40.23 chains; thence on a line 90° left a distance 0.20 chains to west 1/16 corner common to said Sections 12 and 13 described above; thence south on true line, variation 19°27' E, a distance of 40.23 chains to west 1/16 corner of said Section 13.

Beginning at the north 1/16 corner said Section 13 we ran west on random line, variation 19°30' E, a distance of 40.72 chains; thence on a line 90° left a distance of 0.37 chains to north 1/16 corner common to said Sections 13 and 14 described above. Thence east on true line, variation 20°43', a distance of 20.38 chains to an intersection with the north-south sixteenth line which is 20.12 chains north of west 1/16 corner of said Section 13, this being the northwest 1/16 corner of said Section 13. We perpetuated this corner by erecting a squared post, driving a 3/4" OD x 30" iron pipe and witness nails in the following trees:

6" W.F. S 86° W 6.1 feet
14" W.F. S 47° E 7.7 feet

Thence continuing east on true line a distance of 20.12 chains to north 1/16 corner said Section 13.

REGISTERED
OREGON
LAND SURVEYOR

A. L. Moore

Registered Land Surveyor

NOV. 10. 1944
A. L. MOORE
47

jcb
2-28-56

Sections 13 and 14,
Township 40 South,
Range 3 East, W.M.

Page 2

4" W.F. N 66° E 1.7 feet
4" W.F. S 11° W 6.9 feet

Beginning at said west 1/4 corner, we ran north on random line, variation 19°30' E, a distance of 40.12 chains; thence on a line 90° to left a distance of 0.20 chains to northwest corner of said Section 14, where we found the notched stone and bearing trees as called for in the original field notes, and cruiser marks. We further perpetuated this corner by erecting a post and driving a 3/4" OD x 30" iron pipe and witness nails in the following trees:

8" D.F. N 28° W 14.5 feet
6" D.F. S 40° W 11.2 feet
30" Cedar B.T. S 34° E 37.0 feet

Thence south on true line, variation 19°47' E, a distance of 2.33 chains to section corner common to Sections 10 and 15, said township and range identified by the stone and bearing trees called for in the original field notes. Thence continuing south on true line for a total distance of 40.12 chains to said west 1/4 corner.

At the southwest corner of said Section 14, we found a notched stone and original bearing trees in the northeast and southeast quadrants, as called for in the original field notes. We further perpetuated this corner by erecting a post and driving a 3/4" OD x 30" iron pipe and witness nails in the following trees:

34" Cedar B.T. N 63° E 5.9 feet
24" Cedar B.T. S 29° E 29.7 feet

Beginning at the southwest corner of said Section 14, we ran north on random line, variation 19°15' E, a distance of 39.50 chains; thence on a line 90° to left a distance of 1.13 chains to the west 1/4 corner of said Section 14 described above.

Thence south on true line, variation 20°53' E, a distance of 19.31 chains to the south 1/16 corner on the west line of said Section 14.

We established this corner by erecting a squared post and driving a 3/4" OD x 30" iron pipe and witness nails in the following trees:

12" W.F. S 84° W 10.9 feet
16" Cedar N 43° E 16.5 feet

Thence continuing south on true line a distance of 19.81 chains to said southwest corner of Section 14.

Beginning at said southwest corner of Section 14, we ran east on random line, variation 19°10' E, a distance of 40.14 chains; thence on a line 90° to left a distance of 0.28 chains to the south 1/4 corner of said Section 14, where we found a scribed stone and the bearing trees called for in the original field notes. We perpetuated this corner by erecting a squared post and driving a 3/4" OD x 30" iron pipe and witness nails in the following trees:

Sections 13 and 14,
Township 40 South,
Range 3 East, W.M.

8" Cedar B.T. N 16° E 21.8 feet
28" Cedar B.T. S 45° W 19.9 feet

Thence west on true line, variation 19°34' E, a distance of 20.07 chains to the west 1/16 corner common to Sections 14 and 23 said township and range. We established this corner by erecting a squared post and driving a 3/4" OD x 30" iron pipe and witness nails in the following trees:

4" W.F. N 67° W 14.0 feet
16" W.F. S 79° E 6.2 feet

Thence continuing west on true line ^α distance of 20.07 chains to south-west corner of said Section 14.

Beginning at said south 1/4 corner Section 14, we ran east on random line, variation 19°34' E, a distance of 39.36 chains; thence on a line 90° left a distance of 0.12 chains to southeast corner of said Section 14, where we found a notched stone and bearing trees described below. We further perpetuated this corner by erecting a squared post and driving a 1" OD x 30" iron pipe and witness nails in the following trees:

26" W.F. B.T. N 2° E 38.3 feet
7" R.F. N 65° W 4.0 feet
36" S.P. B.T. S 41° W 23.8 feet.
32" R.F. B.T. Stump S 64° E 48.5 feet

Thence west on a true line, variation 19°44' E, a distance of 39.36 chains to said south 1/4 corner Section 14.

At the 1/4 corner common to said Sections 13 and 14 we found a scribed stone and the bearing trees called for in the original field notes marked with BLM tags and cruiser marks. We perpetuated this corner by erecting a squared post and driving a 3/4" OD x 30" iron pipe and witness nails in the following trees:

37" D.F. B.T. S 37° W 25.4 feet
18" Cedar B.T. S 79° E 37.6 feet

Beginning at said quarter corner we ran south on random line, variation 18°00', a distance of 40.06 chains; thence on a line 90° left a distance of 1.83 chains to southeast corner of said Section 14 described above; thence north on true line, variation 20°37' E, a distance of 40.10 chains to said quarter corner.

At the section corner common to Sections 11, 12, 13 and 14 of said township and range, we found a notched stone, post, and a bearing tree in the north-west quadrant marked with a BLM tag and cruiser marks. This corner had been perpetuated with witness nails in the following trees:

46" Y.P. N 61° E 54.4 feet
28" S.P. B.T. N 69° W 23.8 feet
53" S.P. S 83° E 50.9 feet
18" Cedar S 2° E 17.2 feet

Sections 13 and 14,
Township 40 South,
Range 3 East, W.M.

Page 4

We further perpetuated this corner by driving a 3/4" OD x 30" iron pipe.

Beginning at said corner common to Sections 11, 12, 13 and 14, said township and range, we ran south on random line, variation 19°00' E, a distance of 40.10 chains; thence on a line 90° left a distance of 0.30 chains to quarter corner common to said Sections 13 and 14, described above. Thence north on true line, variation 19°36', a distance of 20.05 chains to the north 1/16 corner common to said Sections 13 and 14. We established this corner by erecting a squared post and driving a 3/4" OD x 30" iron pipe and witness nails in the following trees:

4" Cedar N 0°30' W 20.6 feet
6" W.F. S 60° W 30.7 feet

Thence continuing north on true line a distance of 20.05 chains to said corner common to Sections 11, 12, 13 and 14 said township and range.

Beginning at the 1/4 corner common to said Sections 13 and 14 we ran east on random line, variation 19°10' E, a distance of 80.79 chains; thence on a line 90° left a distance of 2.67 chains to east 1/4 corner said Section 13 where we found the scribed stone in a stone mound and bearing trees called for in the original field notes. Thence west on true line, variation 20°55' E, a distance of 80.82 chains to 1/4 corner common to said Sections 13 and 14.

At the north 1/4 corner of said Section 13 we found a post, stone mound and a bearing tree called for in the original field notes. This corner had been perpetuated by witness nails in the following trees:

28" D.F. B.T. N 43 1/2° E 35.6 feet
29" Cedar S 36° W 22.4 feet

We further perpetuated this corner by driving a 3/4" OD x 30" iron pipe.

Beginning at the said north 1/4 corner of Section 13 we ran south on random line, variation 19°10', a distance of 79.61 chains; thence on a line 90° right a distance of 0.12 chains to the south 1/4 corner of said Section 13 where we found the scribed stone and bearing trees called for in the original field notes. Thence north on true line, variation 19°05' E, a distance of 39.23 chains to an intersection with the east-west quarter line at a point 39.68 chains west of the east quarter corner of said Section 13, this being the center of Section 13. We established this corner by erecting a squared post and driving a 3/4" OD x 30" iron pipe and witness nails in the following trees:

30" D.F. N 57° E 8.1 feet
8" W.F. N 82° W 4.5 feet

Thence continuing north on true line a distance of 20.19 chains to the north 1/16 corner which we established by erecting a stone mound and a squared post, and driving a 3/4" OD x 30" iron pipe and witness nails in the following trees: