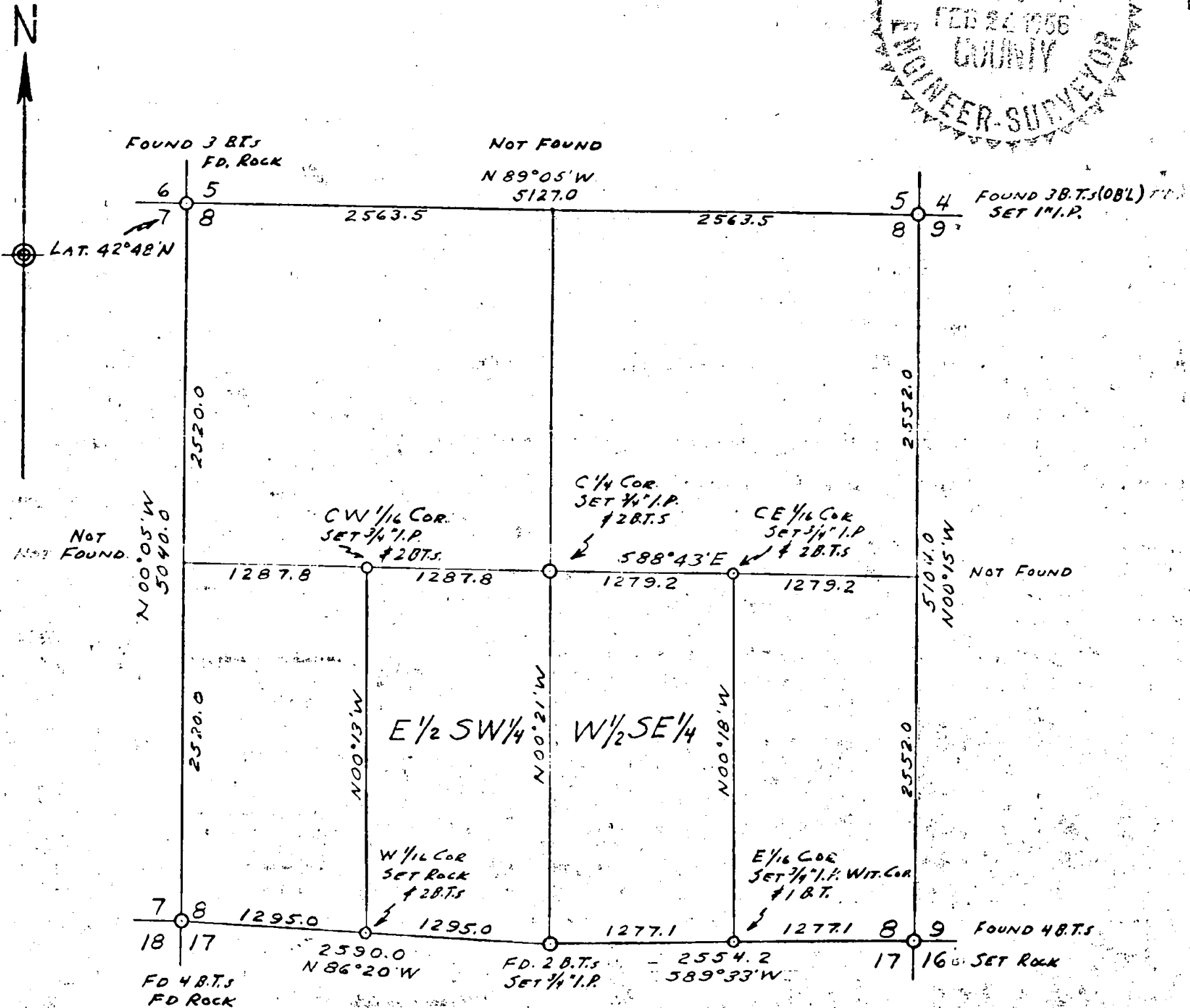
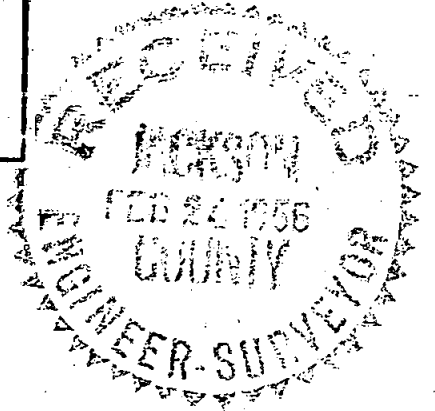


DEPENDENT RESURVEY  
 WITH SUBDIVISION OF SECTION 8  
 T. 32 S., R. 1 E., WILL. MER.  
 FOR  
 FIR-PLY, INC., MEDFORD, ORE.  
 SCALE: 1" = 1000'      JANUARY 29, 1956



*This survey executed with Leupold Mtn. transit and 200' steel tape. Distances were measured on the slope with vertical angles determined by a clinometer in good adjustment. Bearings based upon solar observation and are referred to true Meridian*



RICHARD L. TEMPLIN, JR.  
 REGISTERED LOGGING ENGINEER  
 1004 N. W. HAWTHORNE  
 GRANTS PASS, OREGON

RICHARD L. TEMPLIN, JR.  
REGISTERED LOGGING ENGINEER

795

SURVEY OF SECTION 8, T. 32 S., R. 1. E., W.M. ( CON'T.)

From the foregoing bearings and distances , I calculate the bearings of the subdivisional lines of the section and their respective distances, quarter corners being calculated from single proportionate distance.

Thence,

I set the CW 1/16 corner from a traverse station and mark this corner with a 3/4" iron pipe, 30 ins, long, 24 ins. in the ground and affix an alum. tag mkd. "RE3024", and scribe the following bearing trees:

- a 20" Fir bears S 21\*W 20.2 feet distant mkd. "CW1/16S8BTRE3024"
- a 12" Yew bears N 52\*W 27.6 feet distant mkd. "CW1/16S8BTRE3024"

Thence S 00\*13' E on north and south centerline of SW $\frac{1}{4}$  to W 1/16 section corner of sections 8 and 17, previously described. I fall 0.8 feet west of this corner accepting this falling as a check on the random line traverse of the west section line.

I then return to the CW 1/16 section corner and run S 88\*43' E on true east and west centerline for 1287.8 feet to the center of the section which I mark with a 3/4 in. iron pipe, 30" long, 24" in the ground from which I scribe the following bearing trees:

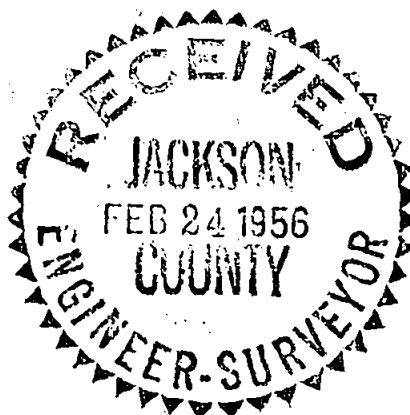
- 28" Fir bears N 47\* W 28.2 feet mkd. "C $\frac{1}{4}$ S8RE3024BT"
- 26" Fir bears N 67\* E 41.0 feet mkd. "C $\frac{1}{4}$ S8BTRE3024"

Thence, Continue S88\*43'E on said centerline for 1279.2 feet to the CE 1/16 section corner which I mark with an iron pipe, 3/4" in diameter, 30" long, 24" in the ground and scribe the following bearing trees:

- 26" Fir bears S22\*E 6.1 feet distant mkd "CE1/16S8BTRE3024"
- 16" Fir bears N65\*E 23.2 feet distant mkd. "CE1/16S8BTRE3024"

Thence, continue S 88\*43'E on said centerline to its intersection with blank line between sections 8 and 9 , falling 1.1 feet south of the midpoint between the northeast and southeast section corners.

Thence, I return to E 1/16 section corner between sections 8 and 17 and run N 00\*18' W on true north and south centerline of SE $\frac{1}{4}$ , falling 0.6 feet east of CE 1/16 section corner, said falling being well within limits of closure.



RICHARD L. TEMPLIN, JR.  
REGISTERED LOGGING ENGINEER

795

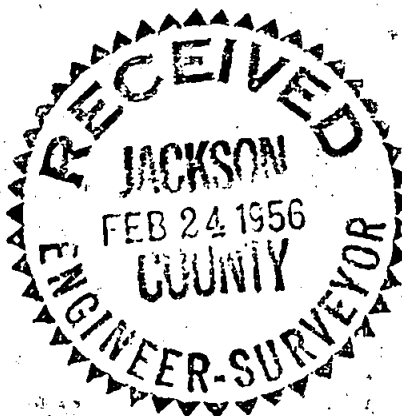
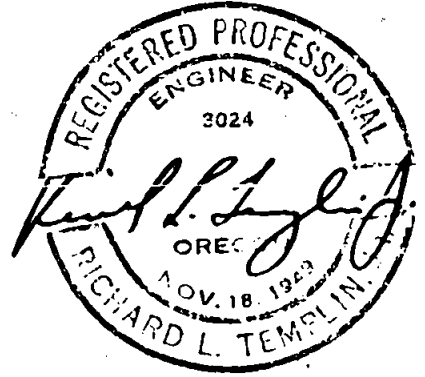
## SURVEY OF SECTION 8, T. 32 S. R. 1 E., (CON'T.)

This survey was executed with a Leupold Mountain Transit, 200 ft. steel tape with distances being measured on the slope and vertical angles measured with a clinometer in good adjustment.

The purpose of the survey was to establish cutting lines for logging operations on the  $E\frac{1}{2}SW\frac{1}{4}$  and  $W\frac{1}{2}SE\frac{1}{4}$ . These lines were all blazed and spray painted a bright red. Mercantable trees outside the property were blazed on the side facing the property with three vertical blazes which were also painted red.

All 1/16 section corners bearing tree faces were also painted a bright red.

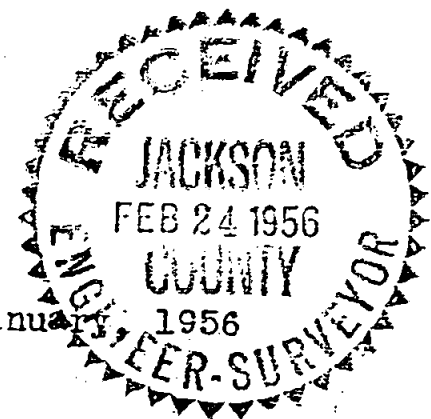
Bearings are based upon two solar observations which were carried through on the property lines. Weather varied from snow to rain with very cloudy weather.



RICHARD L. TEMPLIN, JR.  
REGISTERED LOGGING ENGINEER  
January 29, 1956

795

FIELD NOTES OF SURVEY  
OF  
DEPENDENT RESURVEY AND  
SUBDIVISION OF SECTION 8  
T. 32 S., R. 1 E., W.M.



Survey executed in December, 1955 and January, 1956  
For  
Fir-Ply, Inc.  
Medford, Oregon

Commencing at the corner common to sections 8, 9, 16, and 17 which is a rock 12 x 12 x 8 ins and from which the following original witness trees bear:

- 10" Incense Cedar bears N 51\*E 15 lks. distant,
- 14" Incense Cedar bears S40\* E 18 lks. distant,
- 26" Incense Cedar bears S 12\* W 19 lks distant,
- 8" Incesne Cedar bears N42\* W 14 lks. distant;

thence

S 89\*33' W on true line between sections 8 and 17,

1277.1 Point for E 1/16 section corner of sections 8 and 17 at proportionate distance.

Marked "X" on solid rock ledge from which,

a 9" Live Oak bears S 34\* E 37.8 ft distant

a 3/4" iron pipe bears west 5.0 feet distant with al. tag mkd " RB 3024 E 1/16 Wit.Cor."

2554.2 Point for 1/4 corner of sections 8 and 17 which I monument with a 1 inch iron pipe 30 inch long, 24 ins in the ground from which the following original witness trees bear:

a 12" White Fir bears S 55\*E, 5.9 feet distant blaze healed.

a 24" Douglas Fir bears N 17\* E 15.8 feet distant, plainly bark scribe which I reface left of bark scribe and mark "1/4 S 8 BTRE3024"

thence,

N 86\*20' W on true line between sections 8 and 17,

1295.0 Point for W1/16 section corner of section 8 and 17 at propertionate distance.

Set a rock, 6 x 10 x 14 ins, 8 ins. in the ground in mound of rock and marked "X" on top of rock, from which;

A 34" Fir bears S 60\*W 30.3 feet distant mkd. "W 1/16 S17RE3024BT"

A 5" Live Oak bears N 30\* W 20.7 feet distant mkd. "W1/16S8BTRE3024"

RICHARD L. TEMPLIN, JR.  
REGISTERED LOGGING ENGINEER

795

SURVEY OF SECTION 8, T. 32 S., R. 1 E., W.M. ( CON'T.)

Continue N 86\* 20' W on true line between Sections 8 and 17

2590.0' The corner of sections 7, 8, 17, and 18 monumented with a triangular rock 8x8x16 ins set in mound of rocks by Jackson County Surveyor and with all county surveyor's bearing trees intact, blazes partially covered.

I then return to W 1/16 corner and run a random line N 03\*03' E for 2507 feet; thence I made a traverse to the northwest section corner being the corner common to sections 5,6,7, and 8. which is a rock set by the county surveyor and matching the notes supplied by his office.

I then run East on a blank line via a slashed survey line and chain the distance from the northwest section corner to the northeast section corner which is the corner of sections 4,5,8, and 9. This distance was 5127.0 feet. I made a dilligent search for the quarter corner in the vicinity of the midpoint and was unable to find either the rock or live Oak bearing trees for this corner. The locus of the section corner common to sections 4,5,8, and 9 was determined from the intersection of original blazed section lines ascertained by ring count and from the rotted stumps of three of the original bearing trees with no marks discernible:

Rotted fir stump of 8 in Fir bears S 33\* E 12 lks distant.  
Rotted fir stump of 25 in Fir bears S 22\* W 33 lks distant.  
Fire scarred 10" Fir broken and down bears N 51\* W 40 lks. dis.

I set a 1 in iron pipe, 30 ins long, 24 in in ground mkd. with an alum. tag "RE 3024", and scribe the following new B.T.s :

30" Fir Bears N 12\* E 50.3 feet distant mkd. "S4BTRE3024"  
34" Fir bears N 25\* W 33.5 feet distant mkd. "S5BTRE3024"  
18" Fir bears N 62\* W 32.0 feet distant mkd. "S5BTRE3024"  
24" Fir bears S 02\* E 68.0 feet distant mkd. "S9BTRE3024"

Thence south on a blank line between sections 8 and 9 5104.0 feet to the section corner following original blazed line, said section corner being common to sections 8,9,16, and 17 and previously described. In the vicinity of the midpoint I made a diligent search for the original bearing trees and can find no trace of a fir and madrona remnant which would fit the field notes.

I then return to the midpoint of the section line between section 7 and 8 and make a dilligent search for the bearing trees between for the quarter corner and cannot find any Chinquapin or Fir trees or their remains which will correlate with original notes.

