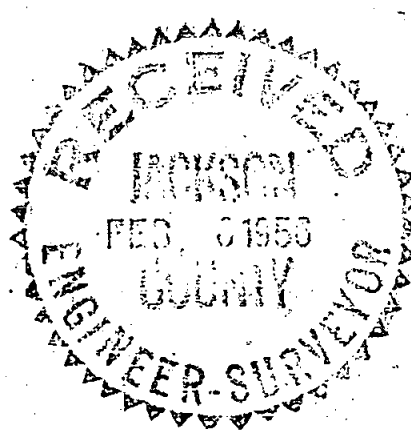
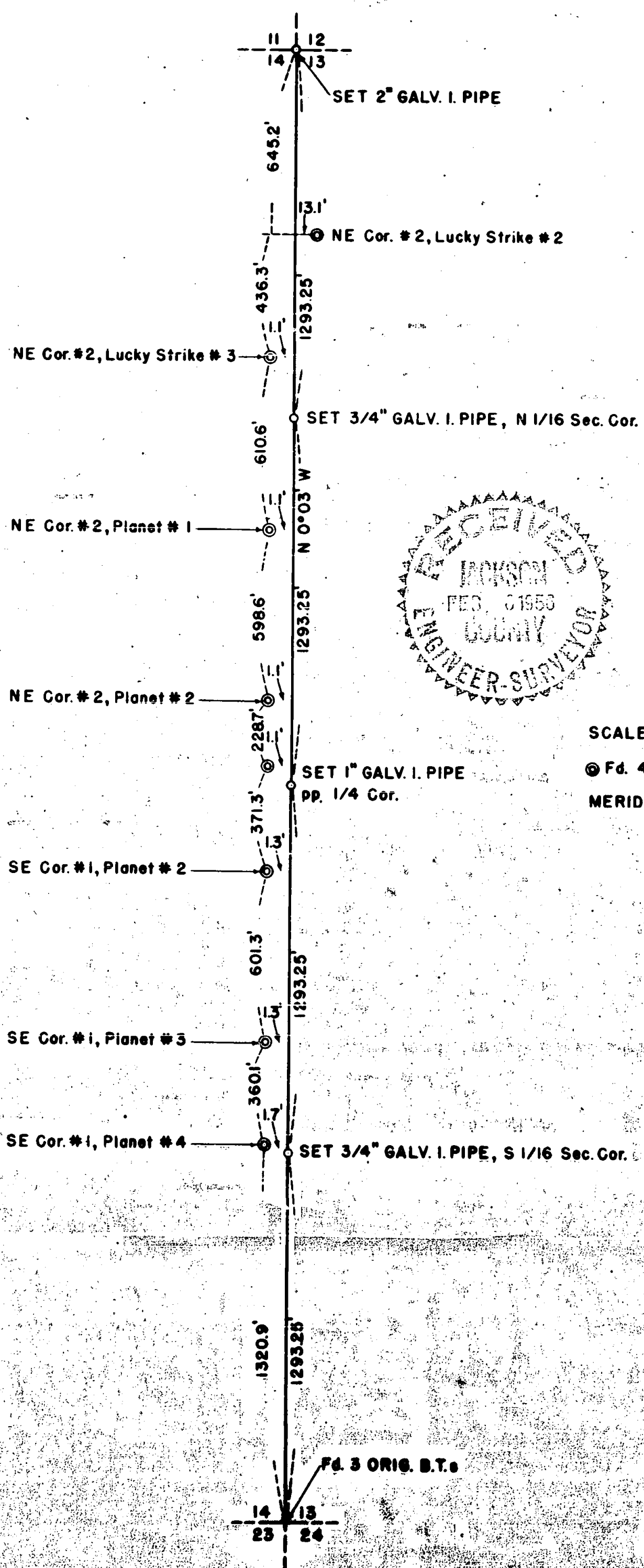


136

787

787

SURVEY FOR:  
**NORTHWEST MINING CO.**  
 LOCATED IN SECS. 13 & 14, T 37 S, R 4 W, WILLAMETTE M.  
 BY: **BOYDEN & BOYDEN**  
 NOV. 1955



SCALE: 1" = 400.0'  
 Ⓞ Fd. 4" x 4" CEDAR POST  
 MERIDIAN BY SOLAR OBSERVATION

REGISTERED  
**OREGON**  
 LAND SURVEYOR  
*Mark E. Boyden*  
 NOVEMBER 1951  
**MARK E. BOYDEN**  
 281

Survey Narrative to comply with Paragraph 209.250,  
Oregon Revised Statutes

FOR: Northwest Mining Company

PURPOSE: To retrace the line between Sections 13 and 14, Township 37 South, Range 4 West and re-establish the lost 1/4 corner and establish the North and South 1/16 corners. Also to tie existing mining claim corners.

PROCEDURE: Began at the corner to Sections 13, 14, 23, and 24, as determined from three original bearing trees and traversed to the corner to Sections 11, 12, 13, and 14, as determined from one original bearing tree standing and the stumps of two others. After a search for the 1/4 corner, produced no evidence of the original trees; set the 1/4 corner and both 1/16 corners on a single proportion between measured and record distances on true line.

November 1955

REGISTERED  
OREGON  
LAND SURVEYOR  
*Mark E. Boyden*  
NOVEMBER 9, 1955  
MARK E. BOYDEN  
281

RECEIVED  
FEB 10 1956  
CLATSOP COUNTY  
LAND SURVEYOR