

# SURVEY FOR JOE HEARIN

LOCATED IN  
SEC. 24, T32SRIW

BY: BOYDEN & BOYDEN  
JUNE - AUG. 1955.

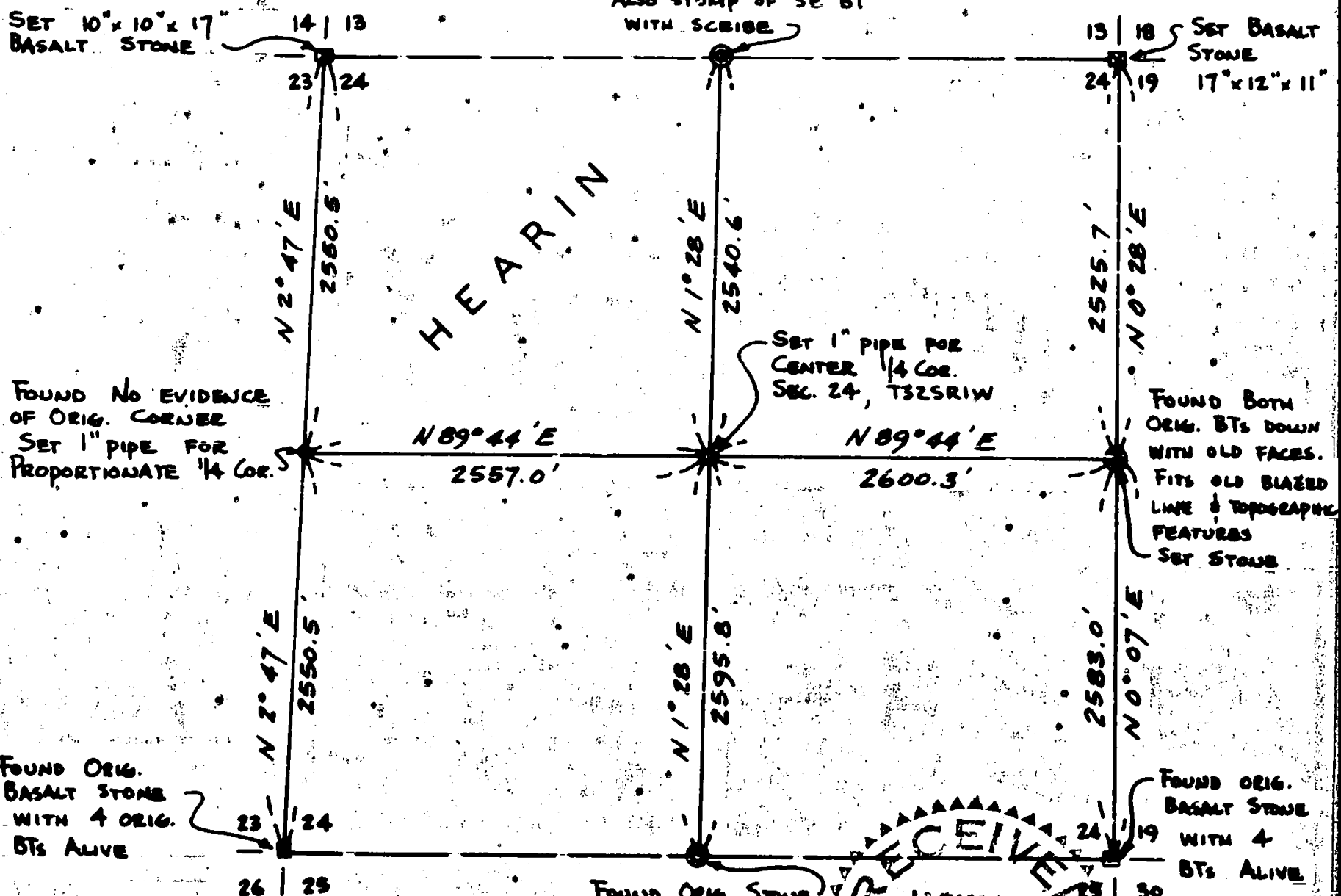
FOUND 4 ORIG. BTs  
(3 ALIVE)

FOUND ORIG. STONE  
(WITH "14" ON N. FACE)  
ALSO STUMP OF SE BT  
WITH SCRIBE

FOUND 3  
ORIG. BTs ALIVE

SET 10" x 10" x 17"  
BASALT STONE

SET BASALT  
STONE  
17" x 12" x 11"



FOUND NO EVIDENCE  
OF ORIG. CORNER  
SET 1" PIPE FOR  
PROPORTIONATE 1/4 COR.

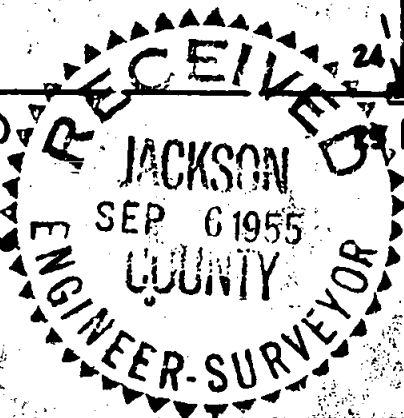
SET 1" PIPE FOR  
CENTER 1/4 COR.  
SEC. 24, T32SRIW

FOUND BOTH  
ORIG. BTs DOWN  
WITH OLD FACES.  
FITs OLD BLAZED  
LINE & TOPOGRAPHIC  
FEATURES  
SET STONE

FOUND ORIG.  
BASALT STONE  
WITH 4 ORIG.  
BTs ALIVE

FOUND ORIG. STONE  
(WITH "14")  
WITH 2 ORIG. BTs  
IN POOR CONDITION

FOUND ORIG.  
BASALT STONE  
WITH 4  
BTs ALIVE



- ⊙ ORIG. COR. RE-ESTABLISHED
- STONE WITH CROSS
- ESTABLISHED COR. (RECORDED)

MERIDIAN BY SOLAR OBSERVATION

SCALE: ~ 1" = 1000'

REGISTERED  
**OREGON**  
LAND SURVEYOR

*Mark E. Boyden*

NOVEMBER 9 1951  
MARK E. BOYDEN  
281

17/L

Survey Narrative to comply with Paragraph 209.250,  
Oregon Revised Statutes.

FOR: Joe Hearin

PURPOSE: To locate and establish the corners of the Hearin property, being the NW $\frac{1}{4}$  of Section 24, Township 32 South, Range 1 West.

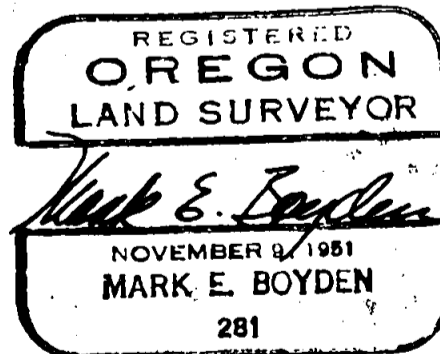
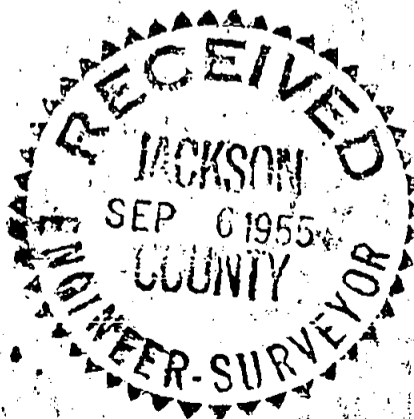
PROCEDURE: Found no evidence of the 1/4 corner between Sections 23 and 24, as the corner falls in an extensively burned-over area. Traversed the West boundary of said Section 24 and set a new corner midway between the Northwest and Southwest corners of said Section.

Found the remainder of the original corners of said Section 24, but ran the East boundary of said Section to verify the East 1/4 corner.

Established the center 1/4 corner at the intersection of direct lines as computed from actual traverse lines run between the opposite 1/4 corners of said Section.

It will be noted from the map that all four Section corners were in good condition and were not re-established, however all five 1/4 corners as shown were re-established and recorded in the appropriate volumes at the County Surveyor's Office.

September - 1955



Survey Narrative to comply with Paragraph 209.250,  
Oregon Revised Statutes.

FOR: Joe Hearin

PURPOSE: To locate and establish the corners of the Hearin property, being the NW $\frac{1}{4}$  of Section 24, Township 32 South, Range 1 West.

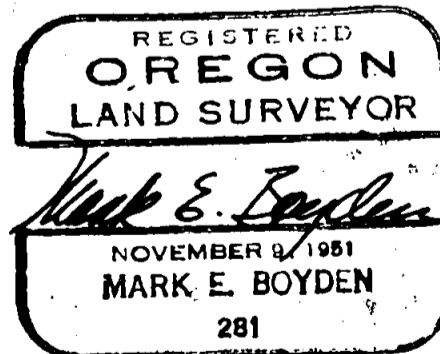
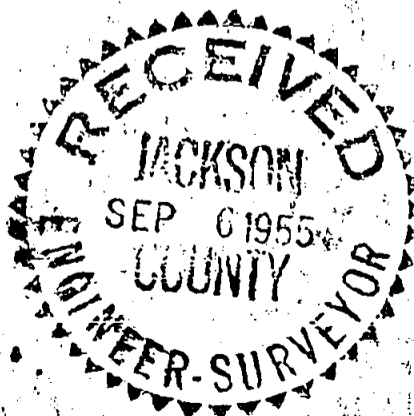
PROCEDURE: Found no evidence of the 1/4 corner between Sections 23 and 24, as the corner falls in an extensively burned-over area. Traversed the West boundary of said Section 24 and set a new corner midway between the Northwest and Southwest corners of said Section.

Found the remainder of the original corners of said Section 24, but ran the East boundary of said Section to verify the East 1/4 corner.

Established the center 1/4 corner at the intersection of direct lines as computed from actual traverse lines run between the opposite 1/4 corners of said Section.

It will be noted from the map that all four Section corners were in good condition and were not re-established, however all five 1/4 corners as shown were re-established and recorded in the appropriate volumes at the County Surveyor's Office.

September - 1955



# SURVEY FOR JOE HEARIN

LOCATED IN  
SEC. 24, T32S R1W

BY: BOYDEN & BOYDEN  
JUNE - AUG. 1955.

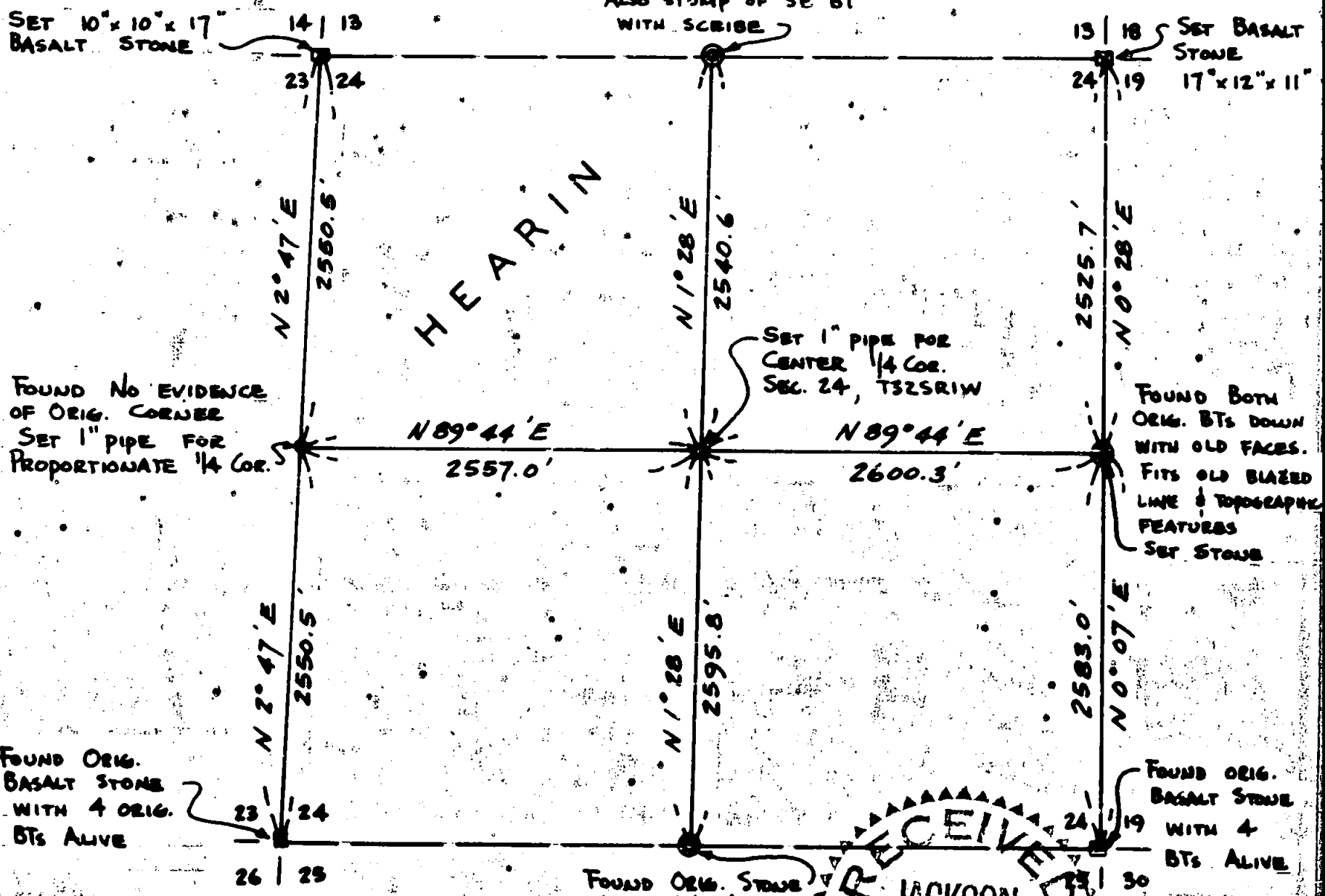
FOUND 4 ORIG. BTs  
(3 ALIVE)

FOUND ORIG. STONE  
(WITH "14" ON N. FACE)  
ALSO STUMP OF SE BT  
WITH SCRIBE

FOUND 3  
ORIG. BTs ALIVE

SET 10" x 10" x 17"  
BASALT STONE

SET BASALT  
STONE  
17" x 12" x 11"



FOUND NO EVIDENCE  
OF ORIG. CORNER  
SET 1" PIPE FOR  
PROPORTIONATE 1/4 COR.

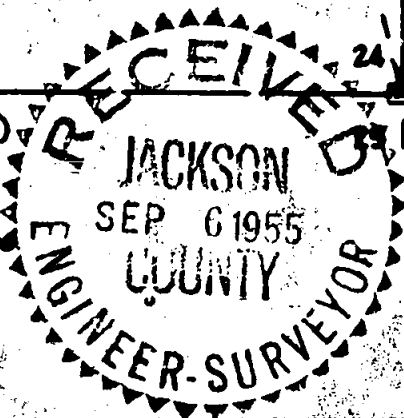
SET 1" PIPE FOR  
CENTER 1/4 COR.  
SEC. 24, T32S R1W

FOUND BOTH  
ORIG. BTs DOWN  
WITH OLD FACES.  
FITS OLD BLAZED  
LINE & TOPOGRAPHIC  
FEATURES  
SET STONE

FOUND ORIG.  
BASALT STONE  
WITH 4 ORIG.  
BTs ALIVE

FOUND ORIG.  
BASALT STONE  
WITH 4  
BTs ALIVE

FOUND ORIG. STONE  
(WITH "14")  
WITH 2 ORIG. BTs  
IN POOR CONDITION



- ⊙ ORIG. COR. RE-ESTABLISHED
- STONE WITH CROSS
- ESTABLISHED COR.  
(RECORDED)

MERIDIAN BY SOLAR OBSERVATION

SCALE: ~ 1" = 1000'

REGISTERED  
OREGON  
LAND SURVEYOR

*Mark E. Boyden*

NOVEMBER 9 1951  
MARK E. BOYDEN  
281

17/L