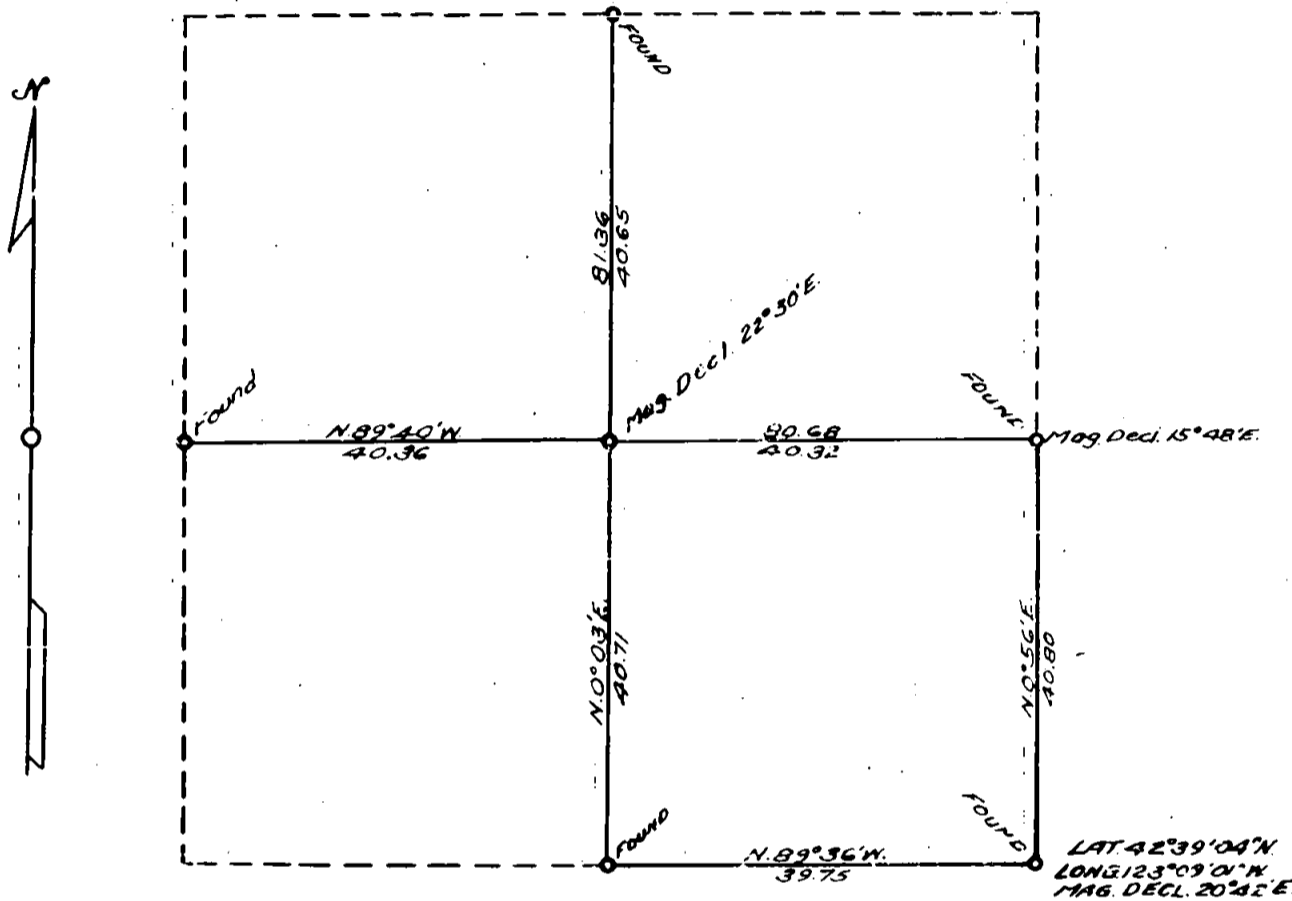


T.33S., R.4W., WILLAMETTE MER., ORE.  
DEPENDENT RESURVEY  
WITH SUBDIVISION OF SECTION 34

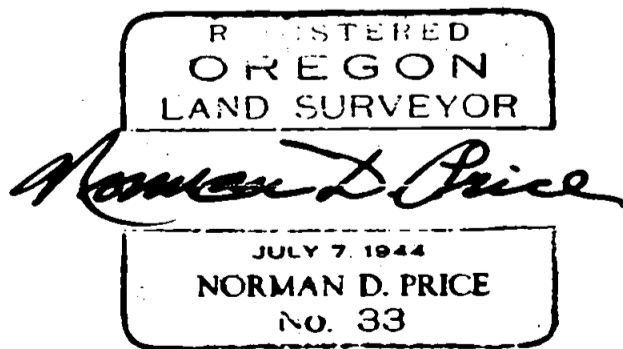
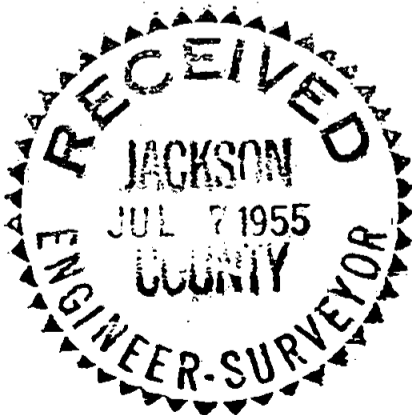


Scale: 1 in. = 20 chs. = 1320 ft. The bearings of all lines are referred to the true  
 Mean Magnetic Declination 20° 32' E. meridian determined by solar observations.

O = Corner Occupied & Monumented  
 ——— Line Surveyed      - - - - - Line Not Retraced

Survey executed June 14-27, 1955 for Lloyd Timber Co.  
 of Grants Pass, Ore.

I hereby certify that the survey represented by this plat is  
 executed in conformity with the Laws of the State of Oregon.



T. 33 S., R. 4 W.

Chains

A Douglas fir, 12 ins. diam., bears S.82½°E., 78 lks. dist., mkd. ¼ S35 BT.

A Douglas fir, 5 ins. diam., bears N.87¼°W., 46 lks. dist., mkd. ¼ S34 BT.

---

Subdivision of Section 34

---

From the ¼ sec. cor. of secs. 3 and 34, on S. bdy. of the Tp., heretofore described

N. 0° 03' E., on N. and S. center line of sec. 34.

40.71 Point for center ¼ sec. cor. of sec. 34 at intersection with the E. and W. center line of sec. 34.

Set an iron pipe, 3 ft. long, 1½ ins. diam., 28 ins. in the ground, mkd. RS33; from which

A Douglas fir, 18 ins. diam., bears N.16°E., 65 lks. dist., mkd. C ¼ S34 RS33 BT.

An incense cedar, 6 ins. diam., bears S.45°E., 19 lks. dist., mkd. C ¼ S34 RS33 BT.

81.36 Point for ¼ sec. cor. of secs. 27 and 34 determined at the record distance from each old bearing tree; the corner stone has slidden out of position and is loose on the ground.

At the corner point,

Set an iron pipe, 3 ft. long, 1½ ins. diam., 28 ins. in the ground, with the original stone deposited at the base, mkd. RS33; from which the original bearing trees:

An incense cedar, 24 ins. diam., bears N.28½°W., 36 lks. dist., with blaze healed.

A madrona, 12 ins. diam., bears S.39¼°E., 28 lks. dist., with blaze healed.

From the ¼ sec. cor. of secs. 34 and 35

N. 89° 40' W., on the E. and W. center line of sec. 34.

40.32 Point for center ¼ sec. cor. of sec. 34 at intersection with the N. and S. center line.

80.68 Point for ¼ sec. cor. of secs. 33 and 34, determined at the record bearing from each original bearing tree. The record measurements are obviously erroneous. The corner point thus located falls on the original blazed line.

Set an iron pipe, 3 ft. long, 1½ ins. diam., 28 ins. in the ground, mkd. RS33; from which the original bearing trees:

A Douglas fir, 26 ins. diam., bears N.2°E., 63 lks. dist., with scribe marks ruined on old blaze but legible on negative which has been carelessly and unskillfully removed. I re-blaze and re-mark ¼ S34 RS33 BT.

A Douglas fir, 18 ins. diam., bears S.8°W., 62 lks. dist., with the scribe marks ¼ S visible.



T. 33 S., R. 4 W.

I hereby certify that the bearings of all lines recorded in this survey were determined by solar observations and that the survey described in the foregoing field notes was executed in conformity with the laws of the State of Oregon.

Grants Pass, Oregon.  
June 30, 1955.

*Norman D. Price*  
Norman D. Price,  
Registered Professional  
Land Surveyor for Oregon,  
No. 33.

REGISTERED  
OREGON  
LAND SURVEYOR

*Norman D. Price*

JULY 7, 1944  
NORMAN D. PRICE  
NO. 33

RECEIVED  
JACKSON  
JUL 7 1955  
COUNTY  
ENGINEER-SURVEYOR

TOWNSHIP 33 SOUTH, RANGE 4 WEST, WILLAMETTE MERIDIAN, OREGON

DEPENDENT RESURVEY OF PART OF THE SOUTH BOUNDARY,

AND SUBDIVISIONAL LINES,

AND

SURVEY OF PART OF THE SUBDIVISION OF SECTION 34

EXECUTED AT THE REQUEST OF LLOYD TIMBER CO.

OF

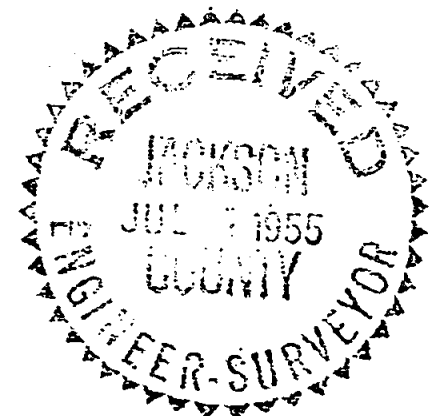
GRANTS PASS, OREGON

BY

Norman D. Price, Registered Professional Land Surveyor.

Survey commenced June 14, 1955.

Survey completed June 27, 1955.



TOWNSHIP 33 SOUTH, RANGE 4 WEST, WILLAMETTE MER., OREGON

Dependent Resurvey of Part of S. Bdy.

Chains

The cor. of secs. 2, 3, 34, and 35, on S. bdy. of Tp., is monumented with an iron post, 2 ins. diam., 9 ins. above ground, firmly set, with brass cap mkd.

T33S R4W  
S34 | S35  
S3 | S2  
T33S  
1952

from which

A madrona, 8 ins. diam., bears N.41½°E., 75 lks. dist., mkd. T33S R4W S35 BT.

A Douglas fir, 8 ins. diam., bears S.85°E., 186 lks. dist., mkd. T34S R4W S2 BT.

A Douglas fir, 8 ins. diam., bears S.33¾°W., 88 lks. dist., mkd. T34S R4W S3 BT.

A Douglas fir, 8 ins. diam., bears N.67¾°W., 144 lks. dist., mkd. T33S R4W S34 BT.

The geographic position of this corner is latitude 42°39'04"N., and longitude 123°09'01"W. The observed magnetic declination is 20°42'E.

June 14, 1955: at this sec. cor. at 8 a.m., app.t., or 8h12m39s a.m., P.S.T. as determined by my watch which reads correct P.S.T., I set off 42°39'N. on the lat. arc; 23°15¾'N. on the decl. arc; of my Gurley solar compass and determine a meridian with the solar attachment which is in perfect adjustment. Like observations were taken at each station along each line.

Thence

N. 89° 36' W., bet. secs. 3 and 34.

39.75 The ¼ sec. cor. of secs. 3 and 34, monumented with an iron post, 1 in. diam., 12 ins. above ground, firmly set, with brass cap mkd.

¼ S34  
S3  
1952

from which

An incense cedar, 18 ins. diam., bears N.23°E., 27 lks. dist., with partial scribe marks visible.

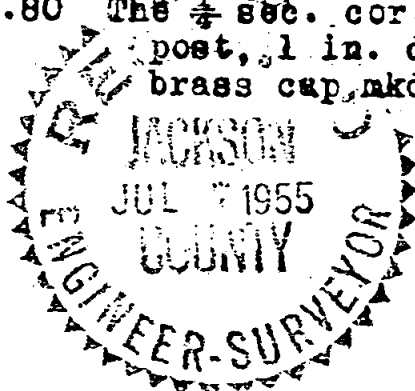
A yellow pine, 24 ins. diam., bears S.24°W., 33 lks. dist., with partial scribe marks visible.

Dependent Resurvey of Part of the Subdivision

From the cor. of secs. 2, 3, 34, and 35, on S. bdy. of the Tp., heretofore described

N. 0° 56' E., bet. secs. 34 and 35.

40.80 The ¼ sec. cor. of secs. 34 and 35, monumented with an iron post, 1 in. diam., 8 ins. above ground, firmly set, with brass cap mkd.



¼  
S34 | S35  
1952

from which