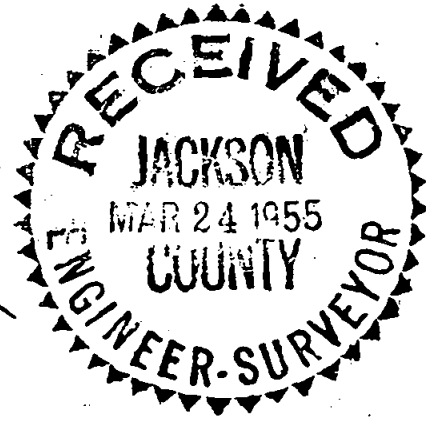


704

SO. PACIFIC RAILROAD MAINLINE

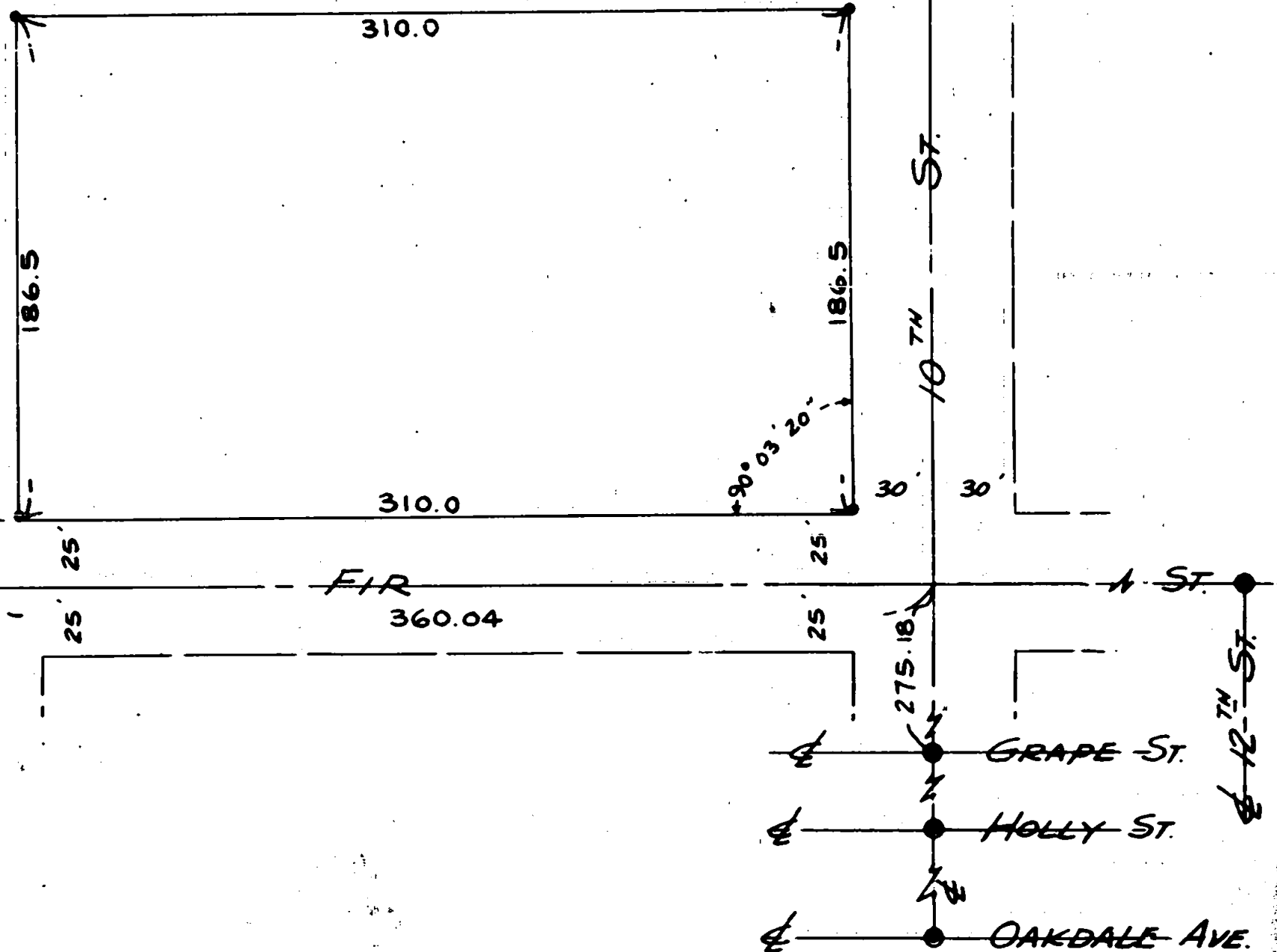
SURVEY FOR AMERICAN NATIONAL FOODS, INC. MEDFORD, OREGON MARK E. BOYDEN - REGISTERED LAND SURVEYOR FEB. 1955



SCALE: 1" = 60'

- City Street Monim't. 5/8" iron pin Lead Plug with tack

NOTE: Property corners fronting FIR ST.: Set 1. pins 12 FT. NELY from true corners.



REGISTERED OREGON LAND SURVEYOR

Signature: Mark E. Boyden OVEMBEL 31 MARK E. BOYDEN 281

704

Survey Narrative to comply with Parragraph 209.250,
Oregon Revised Statutes

FOR: American National Foods, Incorporated

PURPOSE: To monument the outside boundary of that property described in Jackson County Deed Records, Volume 253, Pages 535 and 536, being in the City of Medford, Oregon.

PROCEDURE: For the centerline of Tenth Street, found the iron pin with "X" at Oakdale Avenue, the iron pin with "X" at Holly Street (which pin fits all four existing lead plug City R.Ps.) and the iron pin at Grape Street (using the 4 existing lead plug R.Ps. to determine the point on said pin). This line of monuments was then projected Easterly to an intersection with the following line of monuments found for the centerline of Fir Street:

At 8th Street, a new City monument with bronze disk;

At 9th Street, an "X" on the North ring of the monument case (according to the old City records);

At 12th Street, an iron pin (according to the old City records);

From this intersection point at 10th and Fir Streets, monumented the tract according to the Deed calls as shown on the attached map.

March 1955

