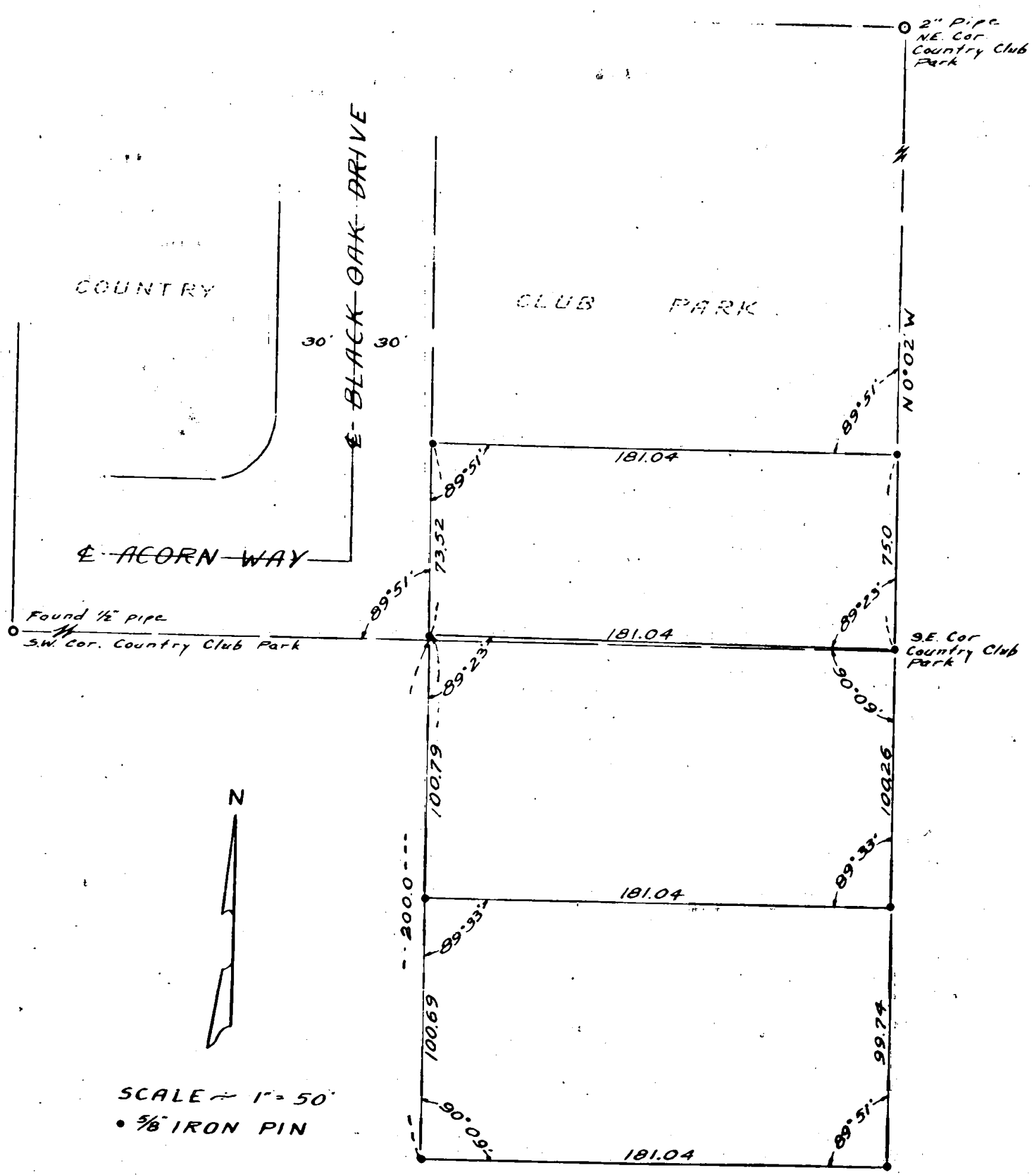


T.W. Mc FADDEN
LOCATED IN SEC. 29, T37S, R1W.
BOYDEN & BOYDEN DEC. 1954



COUNTRY

CLUB PARK

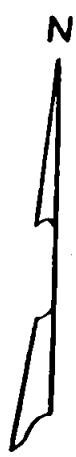
BLACK OAK DRIVE

ACORN WAY

Found 1/2 pipe
SW. Cor. Country Club Park

2" Pipe
NE. Cor.
Country Club
Park

SE. Cor.
Country Club
Park

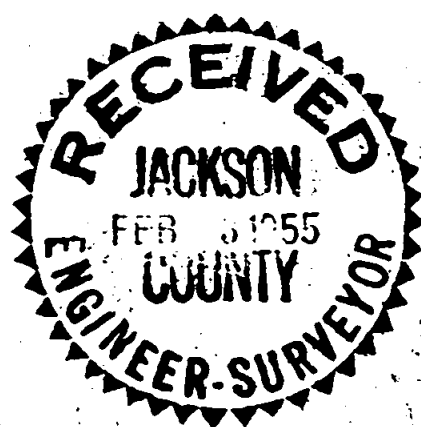


SCALE = 1" = 50'
• 5/8" IRON PIN

REGISTERED
OREGON
LAND SURVEYOR

Mark E. Boyden

NOVEMBER 9, 1951
MARK E. BOYDEN
281



29020
Found 1/2 pipe
1/4 sec. cor.

683

SURVEY NARRATIVE TO COMPLY WITH PARAGRAPH 209.250 Oregon Revised Statutes

Survey For: Thomas W. McFadden

Purpose: To monument and describe in three parcels, the McFadden property described in (Deed Records, Volume 393, Pages 319 to 321) and the South 75 feet of tract 25, Country Club Park in the city of Medford, Oregon.

Procedure: The commencing point of the above described property is the Southeast corner of Country Club Park Subdivision, which monument has recently been destroyed. However, at the time recorded Survey No. 185 was made by this office, said monument was in place. At that time an offset hub on preliminary line was set 10.0 feet from said monument which hub was now recovered, together with the iron pipes at the Southwest corner of tract No. 26, and the Southwest corner of said subdivision. From these controls, the centerline intersection of Acorn Way with Black Oak Drive and the Southeast corner of said subdivision were re-established as used on Survey No. 185. Also recovered the 1/2" pipe, the recognized 1/4 Section Corner between Sections 28 and 29, and the 2" iron pipe at the initial point of said subdivision.

Having knowledge from previous survey that the Northwest corner of said subdivision has been destroyed and that no original monuments for Black Oak Drive are available, determined to establish the line of said Drive parallel to the East boundary of the subdivision according to the official plat.

From these controls the outside boundaries of the McFadden property were established and the interior lines set as directed with all corners monumented with 5/8" iron pins.

December - 1954

