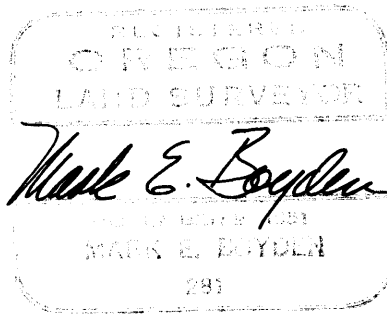


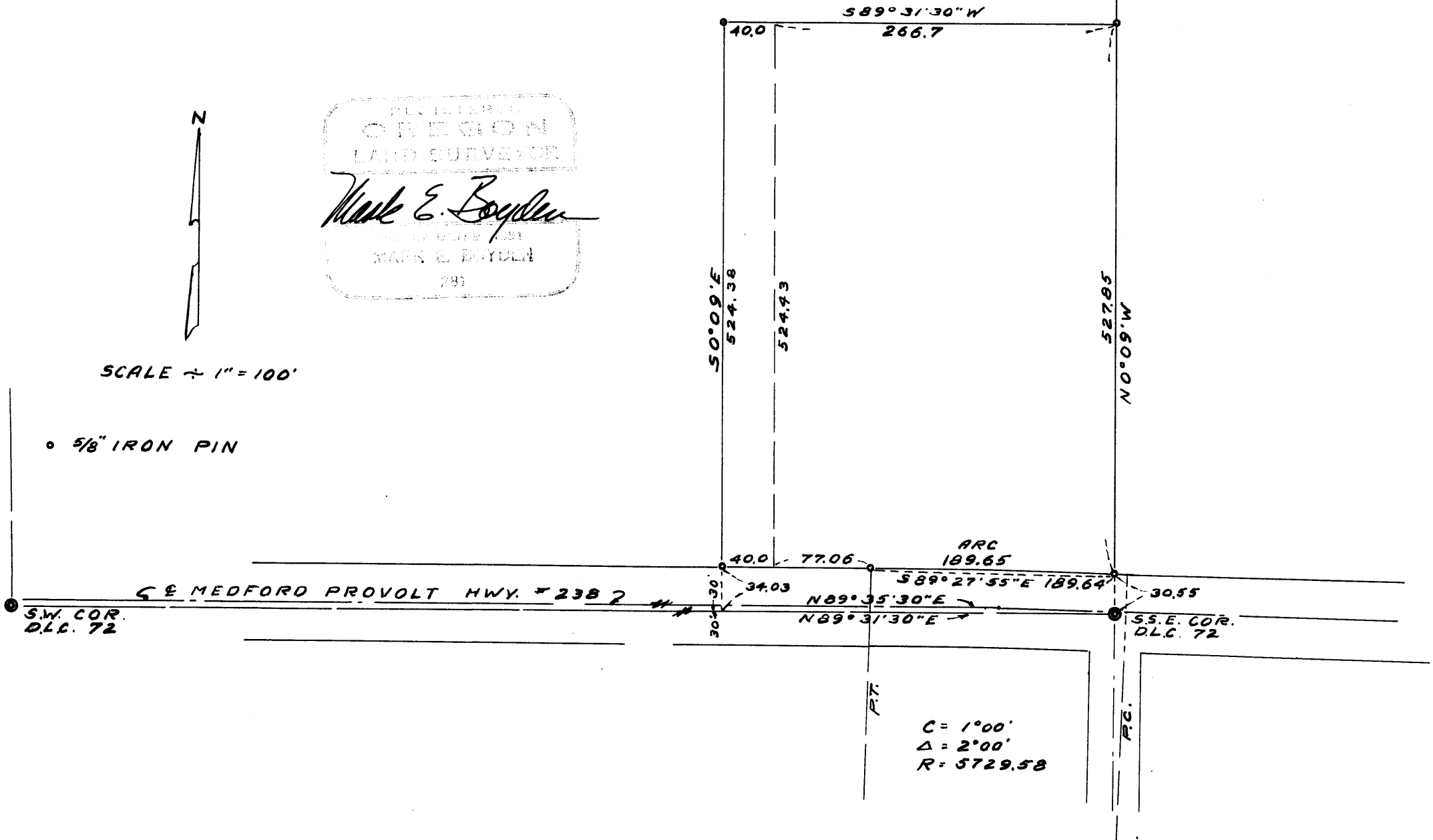
OAK GROVE SCH. DIST. NO. 69
 BY ORDER OF J. HOPKINS
 SEC. 26, T.37 S., R.2 W.
 BOYDEN & BOYDEN MAY-1954

ELL. COR.
 D.L.C. 72



SCALE 1" = 100'

5/8" IRON PIN



Survey Narrative to Comply with Paragraph 209.250, Oregon
Revised Statutes.

Survey For: OAK GROVE SCHOOL DISTRICT NO. #69

Purpose: To monument the overall outside boundary of the school property described in Jackson County Deed Records, Volume 25, Page 13; Volume 174, Page 24; Volume 252, Page 246 and an additional 40 feet of width along the West boundary of the school property to be deeded by the Holmes Brothers.

Procedure:

Control for the South and East boundaries of the property was established from the re-established Southwest, South-southeast and Ell corners of D.L.C. #72, Township 37 South, Range 2 West, with the North and West boundaries parallel with and deed distances from said D.L.C. boundaries. In that the control meridian of the former deeds was erroneous, a deed was prepared to definitely fix the North boundary according to this survey between the Holmes Brothers and the School District.

Control for the Medford-Provolt Highway was established from the 1940 County Survey on file in the County Surveyor's office.

Meridian derived by solar observation and monuments set according to the map to accompany this report.

May 1954

