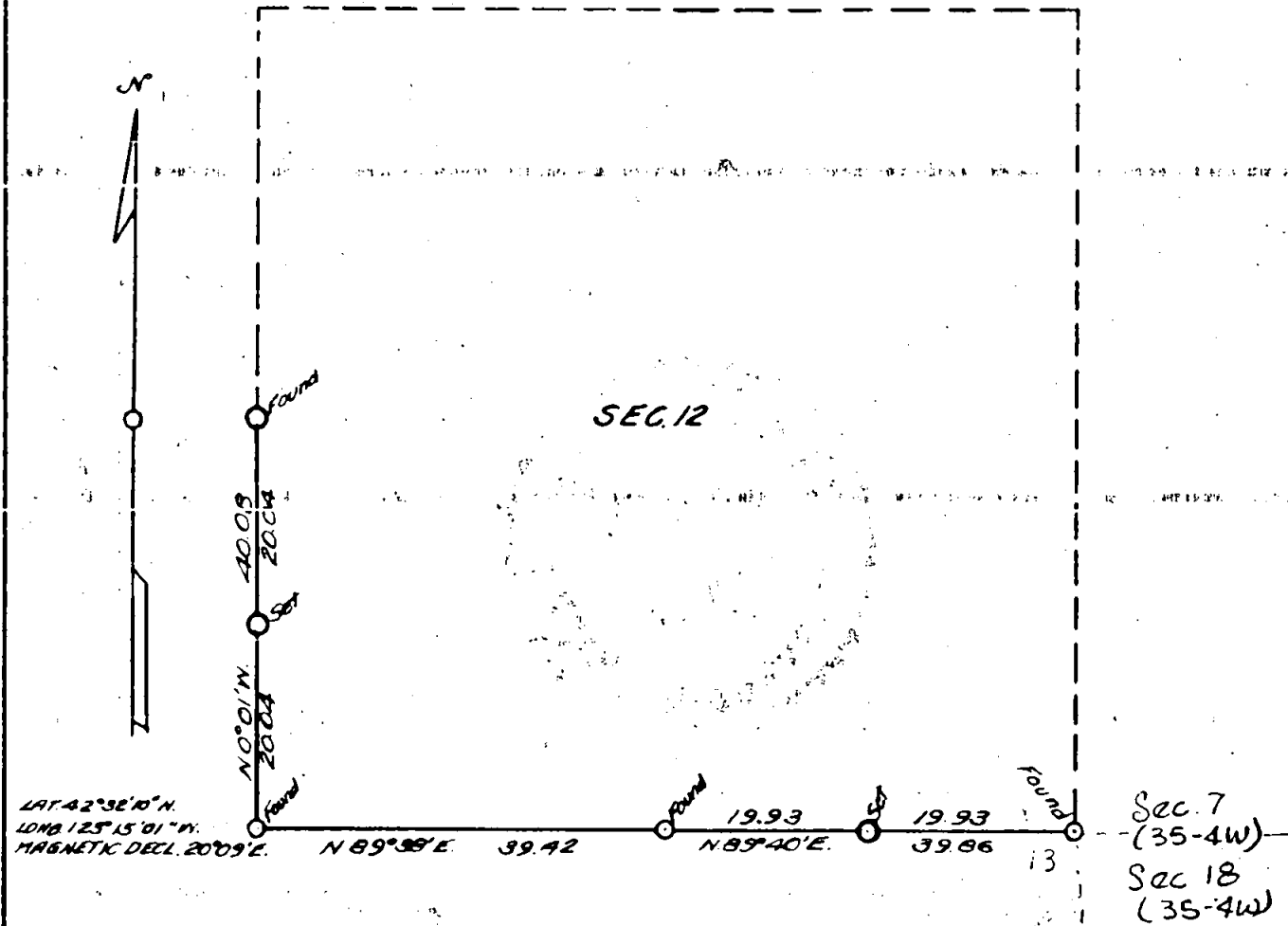


T.35S, R.5W, WILLAMETTE MER., ORE.
DEPENDENT RESURVEY
OF PORTION OF SUBDIVISIONAL LINES



LAT 42° 32' 10" N
LONG 125° 15' 01" W
MAGNETIC DECL. 20° 09' E.

N 89° 39' E. 39.42

N 89° 40' E. 39.86

Sec. 7
(35-4W)
Sec 18
(35-4W)

Scale: 1 in. = 20 chs. = 1320 ft. The bearings of all lines are referred to the true
Mean Magnetic Declination 20° 18' E. meridian determined by solar observations.

Survey executed May 24-28, 1954 for Sunny Valley Lbr. Co.
of Grants Pass, Ore.

I hereby certify that the survey represented by this plat is
executed in conformity with the Laws of the State of Oregon.



REGISTERED
OREGON
LAND SURVEYOR
Norman D. Price
JULY 7, 1944
NORMAN D. PRICE
No. 33

T. 35 S., R. 6 W.

Chains

At the corner point,

Set an iron pipe, 3 ft. long, 2 ins. diam., 28 ins. in the ground, mkd. RS33; from which the original bearing trees:

A sugar pine, 44 ins. diam., bears S. 52 1/2° W., 37 lks. dist., with blazes healed.

A sawed sugar pine stump, 36 ins. diam., bears N. 50° W., 49 lks. dist., with blazes healed. (Not a black oak, 6 ins. diam., bears N. 48° E., 49 lks. dist.)

A yellow pine, 30 ins. diam., bears S. 89° 40' W., 3.81 chs. dist., a line tree of the Sharp survey, mkd. with 2 notches on E. and W. sides.

And a new bearing tree:

A yellow pine, 11 ins. diam., bears N. 10 1/2° W., 50 lks. dist., mkd. T35S R6W S12 RS33 CC BT.

From the cor. of secs. 11, 12, 13, and 14

N. 0° 01' W., bet. secs. 11 and 12.

20.04 Point for S. 1/16 sec. cor. of secs. 11 and 12 at proportionate distance.

Set an iron pipe, 3 ft. long, 1 in. diam., 28 ins. in the ground, mkd. RS33; from which

An incense cedar, 22 ins. diam., bears N. 69 1/2° E., 35 lks. dist., mkd. S 1/16 S12 RS33 BT.

A white fir, 11 ins. diam., bears S. 26 1/2° W., 11 lks. dist., mkd. S 1/16 S11 RS33 BT.

32.20 A line tree of the Sharp survey; a Douglas fir stub, 46 ins. diam., mkd. with 2 notches on N. and S. sides.

40.08 The 1/4 sec. cor. of secs. 11 and 12, monumented with a shattered basalt stone, 10x9x7 ins., firmly set in a mound of stone, mkd. 1/4 on W. face. The original bearing trees are gone. A line tree of the Sharp survey; a Douglas fir stub, 38 ins. diam., bears N. 0° 01' W., 5.20 chs. dist., mkd. with 2 notches on N. and S. sides.

I mark new bearing trees as follows:

A Douglas fir, 12 ins. diam., bears N. 31 1/2° E., 43 1/2 lks. dist., mkd. 1/4 S12 RS33 BT.

A Douglas fir, 14 ins. diam., bears N. 6° W., 25 lks. dist., mkd. 1/4 S11 RS33 BT.

Against E. side of stone, set an iron pipe, 3 ft. long, 1 1/2 ins. diam., mkd. RS33.

T. 35 S., R. 6 W.

I hereby certify that the bearings of all lines recorded in this survey were determined by solar observations and that the survey described in the foregoing field notes was executed in conformity with the laws of the State of Oregon.

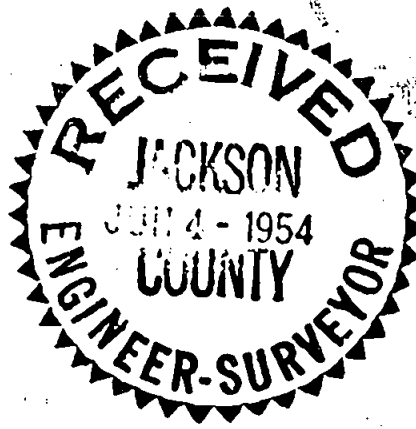
Grants Pass, Oregon.
June 3, 1954.

Norman D. Price
Norman D. Price,
Registered Professional
Land Surveyor for Oregon,
No. 33.

REGISTERED
OREGON
LAND SURVEYOR

Norman D. Price

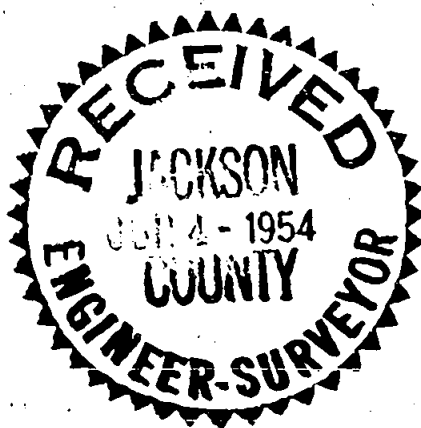
JULY 7 1944
NORMAN D. PRICE
No. 33



TOWNSHIP 35 SOUTH, RANGE 5 WEST, WILLAMETTE MER., OREGON

DEPENDENT RESURVEY OF A PORTION OF THE SUBDIVISIONAL

LINES BOUNDING SECTION 12.



EXECUTED AT THE REQUEST OF THE SUNNY VALLEY LUMBER COMPANY

OF

GRANTS PASS, OREGON

BY

Norman D. Price, Registered Professional Land Surveyor.

Survey commenced May 24, 1954.

Survey completed May 28, 1954.

TOWNSHIP 35 SOUTH, RANGE 5 WEST, WILLAMETTE MER., OREGON

Dependent Resurvey of Portion of The Subdivision.

Chains

The cor. of secs. 11, 12, 13, and 14 is monumented with a basalt stone, 12x10x8 ins., firmly set in a mound of stone, mkd. with one groove on E. and four grooves on S. face; from which the original bearing trees:

A sugar pine, 38 ins. diam., bears N.19 1/2°E., 18 lks. dist., mkd. T35S R5W S12 BT.

An incense cedar, 32 ins. diam., bears S.52 1/2°E., 11 lks. dist., mkd. T35S R5W S18 BT.

A Douglas fir, 30 ins. diam., bears S.18 1/2°W., 20 lks. dist., with blaze healed.

An incense cedar, 30 ins. diam., bears N.63 1/2°W., 48 lks. dist., with blazed partially healed.

Against E. side of stone, set an iron pipe, 3 ft. long, 2 ins. diam., 6 ins. in the ground to bedrock and in a mound of stone to top, mkd. RS33.

The geographic position of this cor. is latitude 42°32'10"N., and longitude 123°15'01"W. The observed magnetic declination is 20°09'E.

May 24, 1954: at this sec. cor., at 8 a.m. app.t., or 8h09m39s a.m. by my watch which reads correct 120th Meridian Time, I set off 42°32'N. on the lat. arc, 20°48'N. on the decl. arc of my Gurley solar compass and determine a meridian with the solar attachment which is in perfect adjustment. Further solar observations were taken at each station along each line.

Thence

N. 89° 38' E., bet. secs. 12 and 13.

39.42 The 1/4 sec. cor. of secs. 12 and 13, monumented with a diorite stone, 15x8x5 ins., firmly set in a mound of stone, mkd. 1/4 on N. face; from which the original bearing trees:

A Douglas fir, 46 ins. diam., bears N.29 1/2°W., 10 lks. dist., with blaze healed.

A live oak (not a chinquapin), 8 ins. diam., bears S.1 1/2°W., 31 lks. dist., with the scribe marks 1/4 S visible on partially healed old blaze.

Against N. side of stone, set an iron pipe, 3 ft. long, 1 1/2 ins. diam., 18 ins. in the ground to bedrock and in a mound of stone to top, mkd. RS33.

N. 89° 40' E., beginning new measurement.

19.93 Point for E. 1/16 sec. cor. of secs. 12 and 13, at proportionate distance.

Set an iron pipe, 3 ft. long, 1 in. diam., 28 ins. in the ground, mkd. RS33; from which

A live oak, 8 ins. diam., bears N.20 1/2°W., 33 lks. dist., mkd. E 1/16 S12 RS33 BT.

An incense cedar, 14 ins. diam., bears S.74°W., 6 lks. dist., mkd. E 1/16 S13 RS33 BT.

39.86 Point for closing cor. of secs. 12 and 13, on E. bdy. of Tp., determined at the record distance from each original bearing tree. The corner stone is gone.