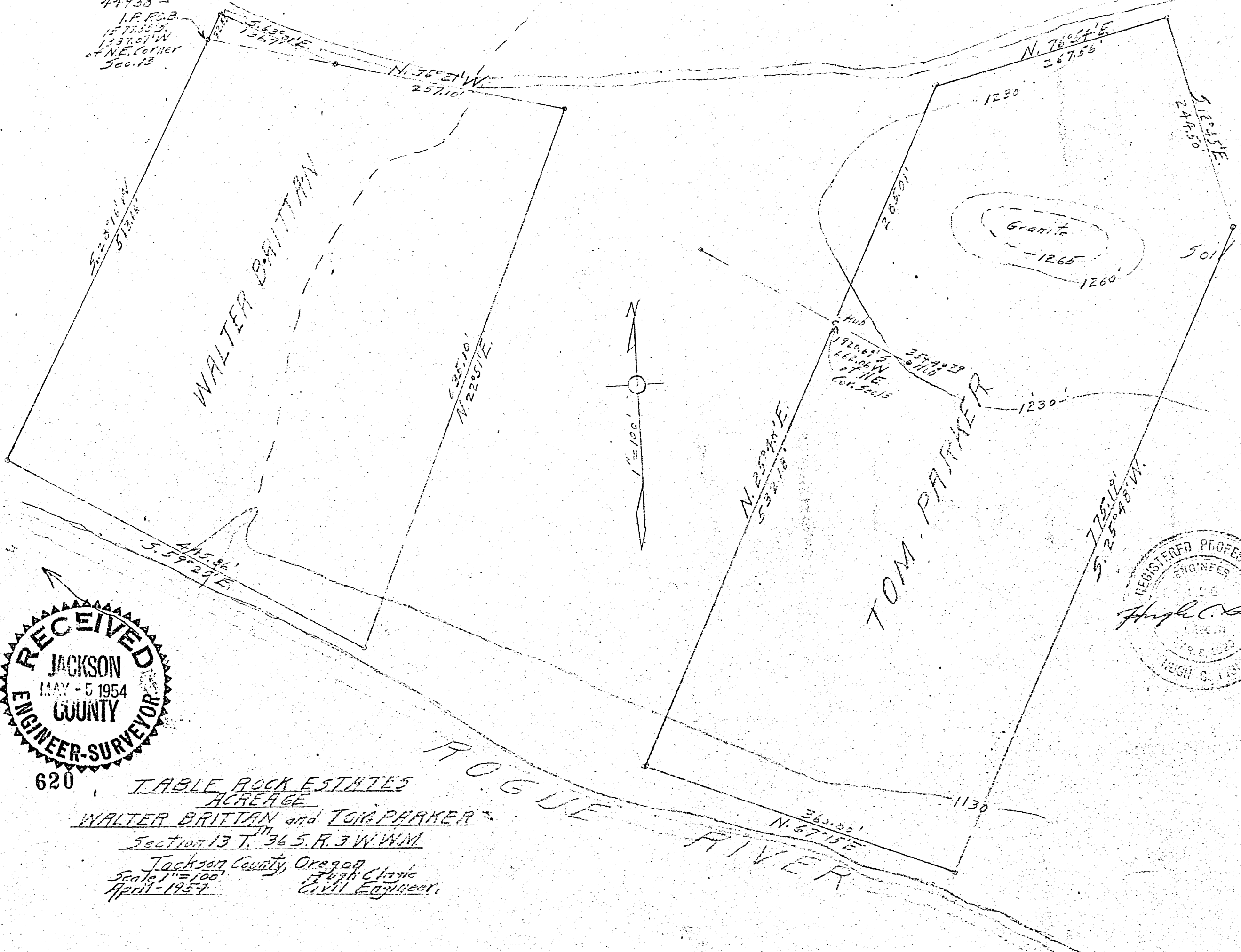
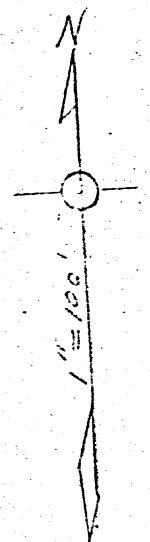


4475347
I.P.R.O.B.
1577.55 S.
1237.67 W
of N.E. CORNER
Sec. 13



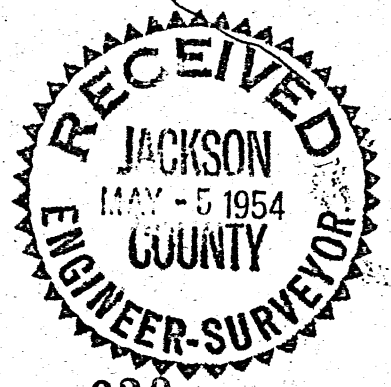
WALTER BRITTAN

TOM PARKER



Granite
-1265-

ROGUE RIVER



620
TABLE ROCK ESTATES
ACREAGE
WALTER BRITTAN and TOM PARKER
Section 13 T. 36 S. R. 3 W. W.M.
Jackson County, Oregon
Scale 1" = 100'
April - 1954
Hugh C. Boyle
Civil Engineer

NARRATIVE REPORT

Survey

Acreage Lots

Walter Britton and Tom R. Parker

TABLE ROCK ESTATES

Section 13, T. 36 S., R. 3 W. W. M.

Purpose of Survey:

To establish boundaries and corners for property to be acquired and description of the parcels of land.

Procedure:

Ties were made from established points on a control traverse to beginning points of parcels surveyed. Control traverse was previously run and tied to government Section Corner at North Corner of Section 13, Township 36 South, Range 3 West of Willamette Meridian in Jackson County, Oregon. Bearings of control traverse established by solar observation.

Hugh C. Angle
Civil Engineer

