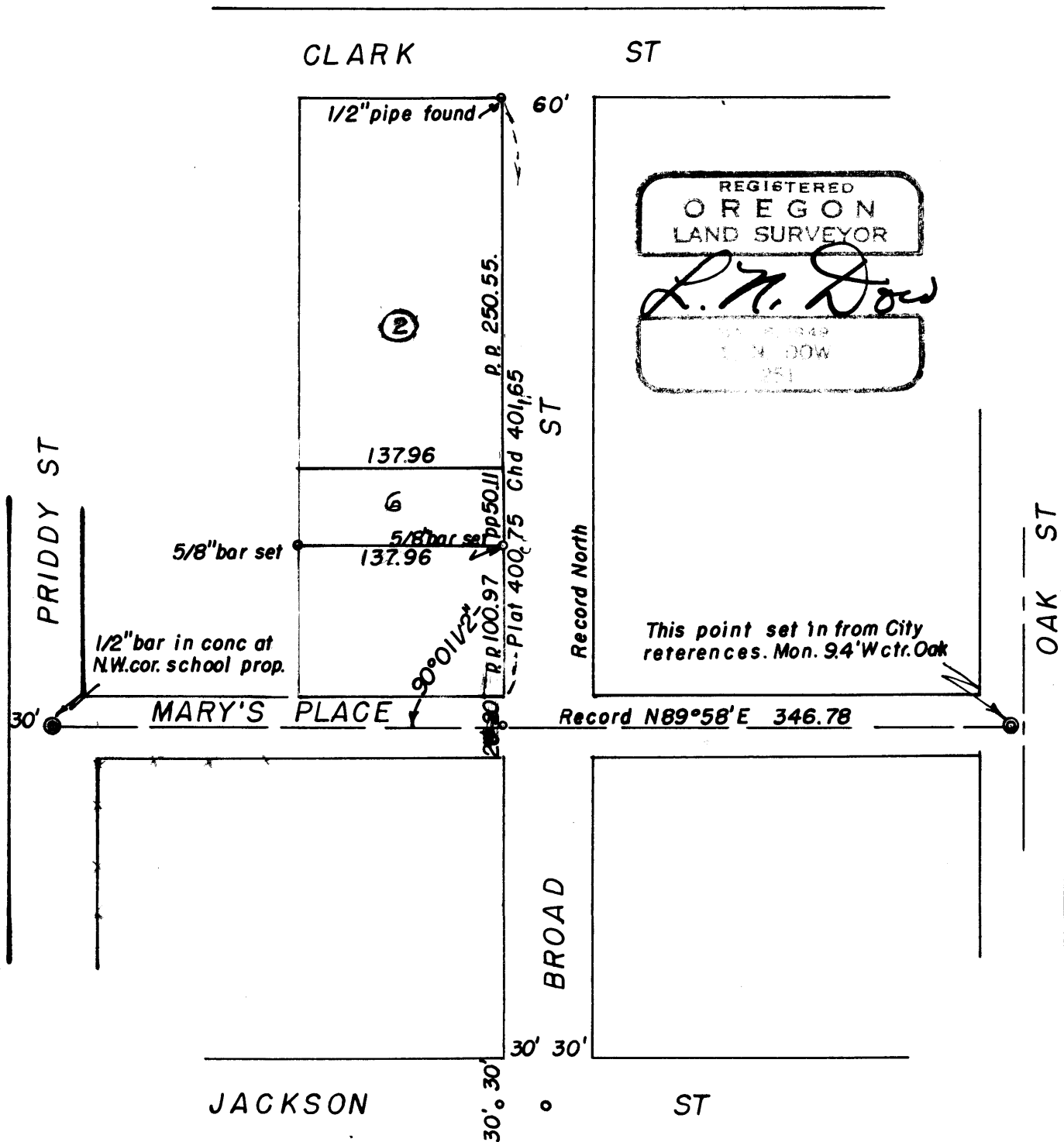


SURVEY FOR T.E. WHITTLE, MEDFORD, OREGON.

Set south line L 6 B 2 MARY'S PLACE ADD, to MEDFORD.

Apr. 5, 1954. Scale as indicated.



Written narrative to accompany plat for survey No. \_\_\_\_\_

Survey for T.E. Whittle, Medford, Oregon.

Date April 5, 1954.

Purpose to set the south line of Lot 6 Block 2 Mary's Place Addition to the City of Medford, Jackson County, Oregon.

Procedure, Found the concrete Monument 30 feet from the west line of Priddy Street at the center of Mary's Place Street this monument is a bar set in concrete about 4 inches below the surface of the gravel street, found the monument 9.4 feet west of the center of Oak street by city references only, did not dig through the new pavement for the monument itself; next I found the monument at the center of Broad and Jackson Street and set a point 30 feet west for the west line of Broad St. Then found a 1/2 inch pipe at the south line of Clark Street on the west line of Broad Street, I then intersected Mary's Street with the west line of Broad street and turned the angle for control, then chained 20.0 feet for the north line of Mary's Place street, then chained a distance of 401.65 feet to the pin at the south line of Clark Street ( plat distance calls for 400.0 feet)

Next computed the proportionate distances and set a 5/8" bar for the southeast corner of Lot 6, and turned the angle parallel to Mary's Place and set a 5/8" bar for the southwest corner of Lot 6 as shown on the plat.

