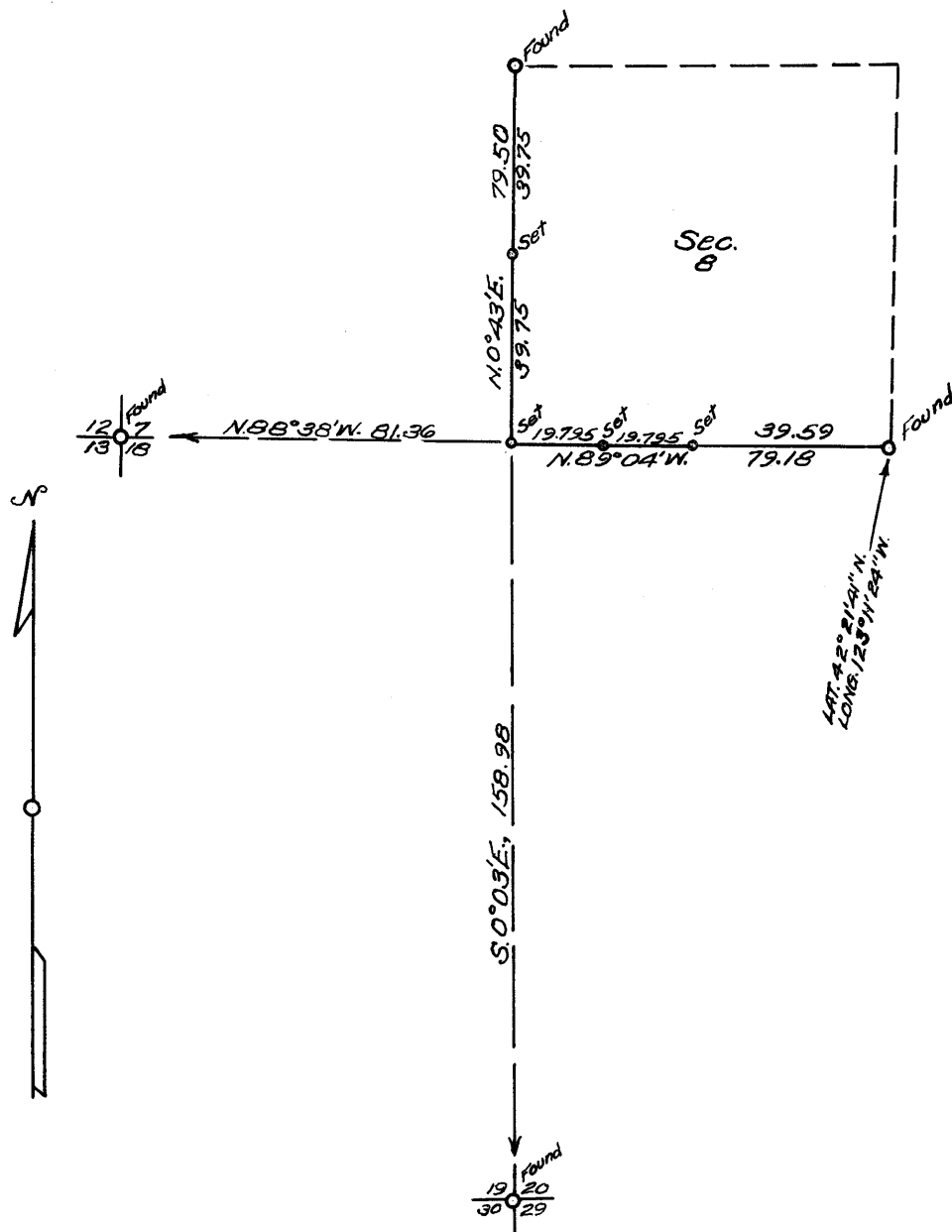


T.37S, R.4W, WILLAMETTE MER., ORE.
DEPENDENT RESURVEY



Scale: 1 in. = 40 chs = 2640 ft. The bearings of all lines are referred to the true Mean Magnetic Declination 20° 09' E. meridian determined by solar observations.

○ = Corner Occupied & Monumented.

———— Line Resurveyed

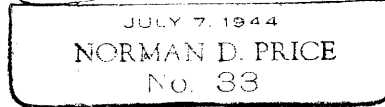
----- Line Not Retraced.

Survey executed Mar. 1 - Apr. 1, 1954 for Lloyd Timber Co. of Grant's Pass, Ore.

I hereby certify that the survey represented by this plat is executed in conformity with the Laws of the State of Oregon.



Norman D. Price



T. 37 S., R. 4 W.

Chains

A yew, 10 ins. diam., bears S.38°W., 67 lks. dist.,
mkd. W1/16 S17 RS33 BT.

79.18 Point for the corner of secs. 7, 8, 17, and 18, at proportionate distance; there is no remaining evidence of the original corner.

Set an iron pipe, 3 ft. long, 2 ins. diam., 28 ins. in the ground, mkd. RS33; from which

A Douglas fir, 28 ins. diam., bears N.40°E., 71 lks. dist., mkd. T37S R4W S8 RS33 BT.

A Douglas fir, 20 ins. diam., bears S.73°E., 17 lks. dist., mkd. T37S R4W S17 RS33 BT.

A Douglas fir, 34 ins. diam., bears S.43°W., 39 lks. dist., mkd. T37S R4W S18 RS33 BT.

A Douglas fir, 48 ins. diam., bears N.18°W., 25 lks. dist., mkd. T37S, R4W S7 RS33 BT.

From this point the corner of secs. 19, 20, 29, and 30 (the nearest extant corner to the south) bears S. 0° 03' E., 158.98 chs. dist., monumented with a granite stone, 10x5x8 ins., above ground, firmly set, mkd. with 5 notches on E., and 2 notches on S. edge; from which the extant original bearing trees:

A black oak, 30 ins. diam., bears N.80°E., 60 lks. dist., with blazes healed.

A black oak, 28 ins. diam., bears S.27°W., 115 lks. dist., with blazes healed.

And new bearing trees:

A white oak, 6 ins. diam., bears S.59°E., 42 lks. dist., mkd. T37S R4W S29 RS33 BT.

A white oak, 8 ins. diam., bears N.50°W., 24 lks. dist., mkd. T37S R4W S19 RS33 BT.

Against S. side of stone, set an iron pipe, 3 ft. long, 2 ins. diam., 28 ins. in the ground, mkd. RS33.

From the same point the corner of secs. 7, 12, 13, and 18, on W. bdy. of the Tp. (the nearest extant corner to the West) bears N. 88° 38' W., 81.36 chs. dist., the locus of which is determined at the record distance from each of the original bearing trees.

At the corner point,

Set an iron pipe, 3 ft. long, 2 ins. diam., 28 ins. in the ground, mkd. RS33; from which the original bearing trees:

A badly decayed madrona stump bears N.60°E., 13 lks. dist., with no marks remaining.

A Douglas fir, 18 ins. diam., bears S.38°E., 10 lks. dist., with blazes healed.

A Douglas fir, 28 ins. diam., bears S.8°W., 18 lks. dist., with blazes healed.

A badly decayed black oak, dead and down, bears N.65°W., 47 lks. dist., with no marks remaining.

T. 37 S., R. 4 W.

Chains

And new bearing trees:

A Douglas fir, 24 ins. diam., bears N.80°E., 37 lks.
dist., mkd. T37S R4W S7 RS33 BT.

A Douglas fir, 20 ins. diam., bears N.62°W., 69 lks.
dist., mkd. T37S R5W S12 RS33 BT.

From the corner of secs. 7, 8, 17, and 18,

N. 0° 43' E., bet. secs. 7 and 8.

39.75 Point for the $\frac{1}{4}$ sec. cor. of secs. 7 and 8, at proportionate distance; there is no remaining evidence of the original corner.

Set an iron pipe, 3 ft. long, $1\frac{1}{2}$ ins. diam., 28 ins. in the ground, mkd. RS33; from which

A Douglas fir, 14 ins. diam., bears N.36 $\frac{1}{2}$ °E., 152 lks.
dist., mkd. $\frac{1}{4}$ S8 RS33 BT.

A Douglas fir, 12 ins. diam., bears N.32°W., 32 lks.
dist., mkd. $\frac{1}{4}$ S7 RS33 BT.

79.50 Point for cor. of secs. 5, 6, 7, and 8 determined at the record distance from each of the extant original bearing trees.

At the corner point,

Set an iron pipe, 3 ft. long, 2 ins. diam., 28 ins. in the ground, mkd. RS33; from which the extant original bearing trees:

A sawed Douglas fir stump, 30 ins. diam., bears N.25°E., 80 lks. dist., with blazes healed.

A Douglas fir, 38 ins. diam., bears S.65°W., 31 lks. dist., with blazes healed.

A Douglas fir, 38 ins. diam., bears N.19°W., 36 lks. dist., with partial scribe marks visible.

And new bearing trees:

A white fir, 12 ins. diam., bears N.68 $\frac{1}{2}$ °E., 50 lks. dist., mkd. T37S R4W S5 RS33 BT.

A Douglas fir, 28 ins. diam., bears S.13°E., 107 lks. dist., mkd. T37S R4W S8 RS33 BT.

I hereby certify that the bearings of all lines recorded in this survey were determined by solar observations and that the survey described in the foregoing field notes was executed in conformity with the laws of the State of Oregon.

Grants Pass, Oregon.
April 3, 1954.

REGISTERED
OREGON
LAND SURVEYOR

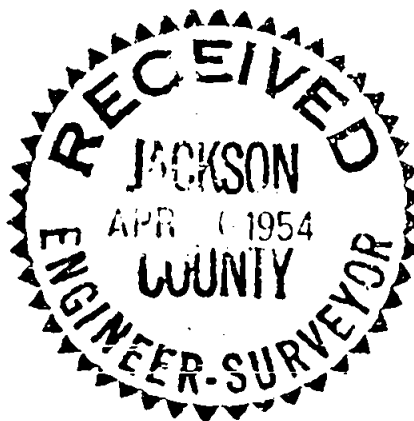
Norman D. Price

JULY 7, 1944
NORMAN D. PRICE
No. 33

Norman D. Price
Norman D. Price,
Registered Professional
Land Surveyor for Oregon,
No. 33.

TOWNSHIP 37 SOUTH, RANGE 4 WEST, WILLAMETTE MER., OREGON

DEPENDENT RESURVEY OF PART OF
SUBDIVISIONAL LINES BOUNDING SECTION 8



EXECUTED AT THE REQUEST OF THE LLOYD TIMBER CO.

OF

GRANTS PASS, OREGON

BY

Norman D. Price, Registered Professional Land Surveyor.

Survey commenced March 1, 1954.

Survey completed April 1, 1954.

TOWNSHIP 37 SOUTH, RANGE 4 WEST, WILLAMETTE MER., OREGON

Dependent Resurvey of Part of Subdivision.

Chains

The locus of cor. of secs. 8, 9, 16, and 17 is determined at the record bearing and distance from each of the extant original bearing trees.

At the corner point,

Set an iron pipe, 3 ft. long, 2 ins. diam., 28 ins. in the ground, mkd. RS33; from which the extant original bearing trees:

A Douglas fir, 34 ins. diam., bears N.60°E., 68 lks. dist., with old blaze burnt. I re-blaze and re-mark T37S R4W S9 RS33 BT.

A black oak, 22 ins. diam., bears S.33°W., 33 lks. dist., with blazes healed.

And new bearing trees:

A black oak, 10 ins. diam., bears S.63°E., 54 lks. dist., mkd. T37S R4W S16 RS33 BT.

A Douglas fir, 8 ins. diam., bears N.42½°W., 52 lks. dist., mkd. T37S R4W S8 RS33 BT.

The geographic position of this corner is latitude 42°21'41"N., and longitude 123°11'24"W.

March 1, 1954: at this sec. cor., at 9 a.m., app.t., or 9h25m16s a.m., by my watch which reads correct P.S.T. when compared with radio time signals, I set off 42°21½'N., on the lat. arc; 7°34'S., on the decl. arc; of my Gurley solar transit and determine a meridian with the solar attachment which is in perfect adjustment. All lines were carried forward by double back and foresights and the resulting bearings checked by numerous solar observations.

Thence

N. 89° 04' W., on true line, bet. secs. 8 and 17.

39.59 Point for ¼ sec. cor. of secs. 8 and 17, at proportionate distance; there is no remaining evidence of the original corner.

Set an iron pipe, 3 ft. long, 1½ ins. diam., 28 ins. in the ground, mkd. RS33; from which

A Douglas fir, 12 ins. diam., bears N.82°E., 68 lks. dist., mkd. ¼ S8 RS33 BT.

A Douglas fir, 50 ins. diam., bears S.18½°E., 61 lks. dist., mkd. ¼ S17 RS33 BT.

59.385 Point for W. 1/16 sec. cor. of secs. 8 and 17 at proportionate distance.

Set an iron pipe, 3 ft. long, 1 in. diam., 6 ins. in the ground to bedrock, and in a mound of stone to top, mkd. RS33; from which

A yew, 6 ins. diam., bears N.46°W., 30 lks. dist., mkd. W1/16 S8 RS33 BT.