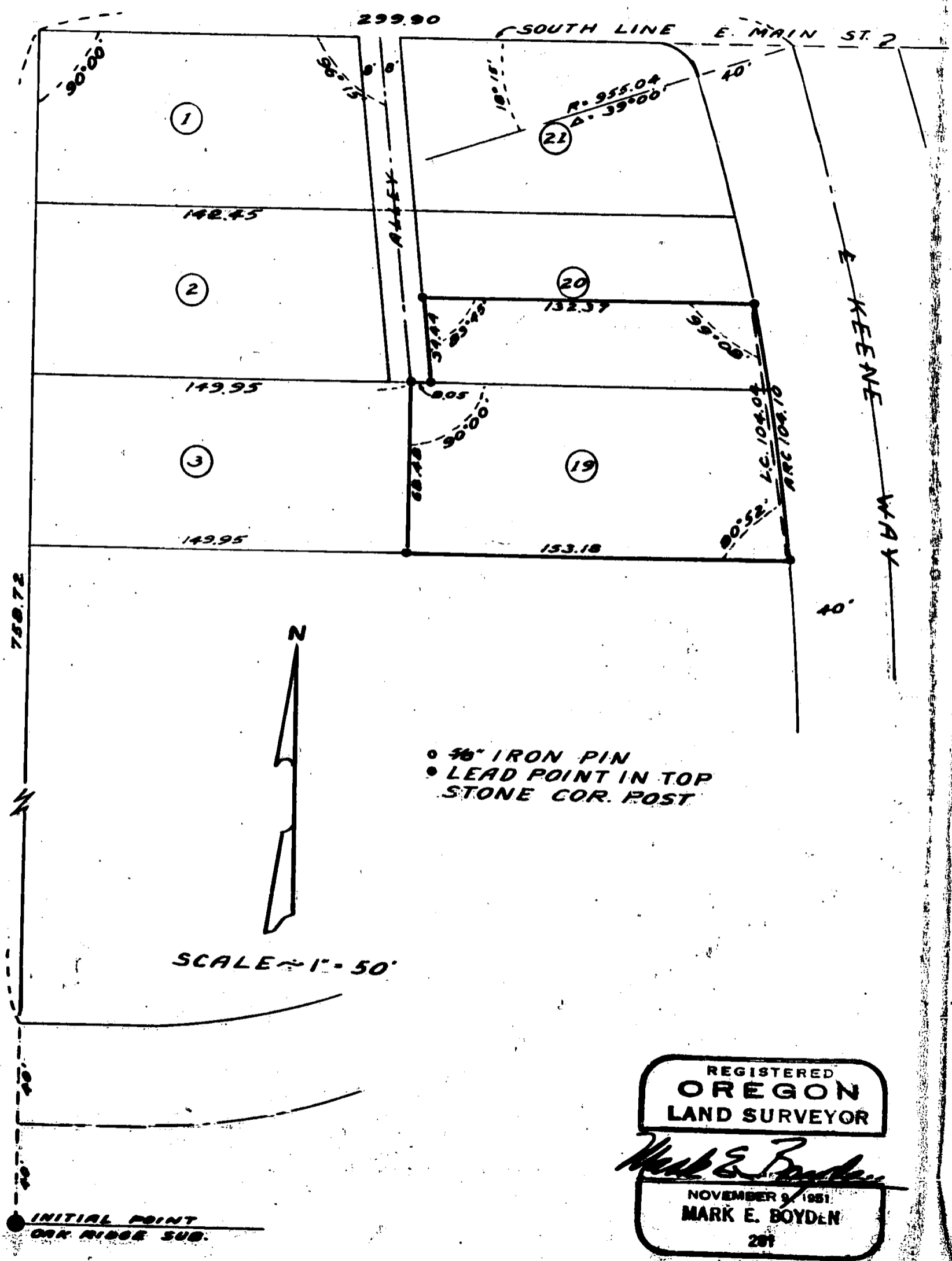


T. H. EMMENS
LOT N^o 19 & S. 1/2 LOT N^o 20, BLOCK N^o 1
SISKIYOU HEIGHTS ADD. TO MEDFORD
M. E. BOYDEN
OCT. 1953



- 3/8" IRON PIN
- LEAD POINT IN TOP STONE COR. POST

SCALE 1" = 50'

INITIAL POINT
OAK RIDGE SUB.

REGISTERED
OREGON
LAND SURVEYOR

Mark E. Boyden

NOVEMBER 9 1953
MARK E. BOYDEN
281

Survey Narrative to Comply with Section 87-330 Oregon State Law
(1947)

Survey For: T. H. EMMENS

Purpose: To monument the boundaries of Lot No. 19 and the South $\frac{1}{2}$ of Lot No. 20 Block No. 1 Siskiyou Heights Addition to the City of Medford.

the same on field

Procedure: From the point of intersection of the South line of East Main Street and the centerline of Keene Way as determined by previous surveys ran a plat record traverse by long chords along the center line of Keene Way to the West boundary of said Addition, which record point fell West and South of the same location if set from the monument at the initial point of Oak Ridge Subdivision.

By coordination it was found that if plat record angles were used and a constant correction applied to the distances the two above mentioned points would be coincident and that said Block No. 1 would close with the same accuracy as the original plat.

It was considered that the intentions in establishing the half line of Lot No. 20 was to be a line midway between the North and South boundaries and parallel to same.

The boundaries of said Lots were established by the application of proportional distances and monuments were set as shown on the map to accompany this report.

October - 1953

