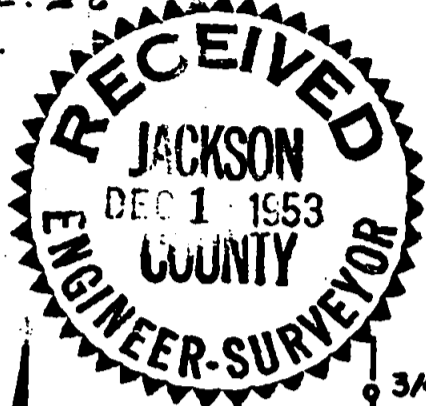


SURVEY FOR C.F. & LUCILE HOPPE
305 LOZIER LANE

IN O'HARBAUGH SUBDIVISION IN D.L.C. 76. T.37S.R. 2 W. (W.M.)
Sec. 26

JACKSON COUNTY, OREGON.

Scale 1" = 100'



REGISTERED
OREGON
LAND SURVEYOR
L. N. Dow

594

D.R. 266-207

D.R. 266-206

S 89° 57' 40" E 540.53

N 89° 57' 50" W 145.0
5/8" Rod Set

S 89° 57' 50" E 145
5/8" Rod Set

N 89° 57' 50" W 540.50
5/8" x 30" bar set

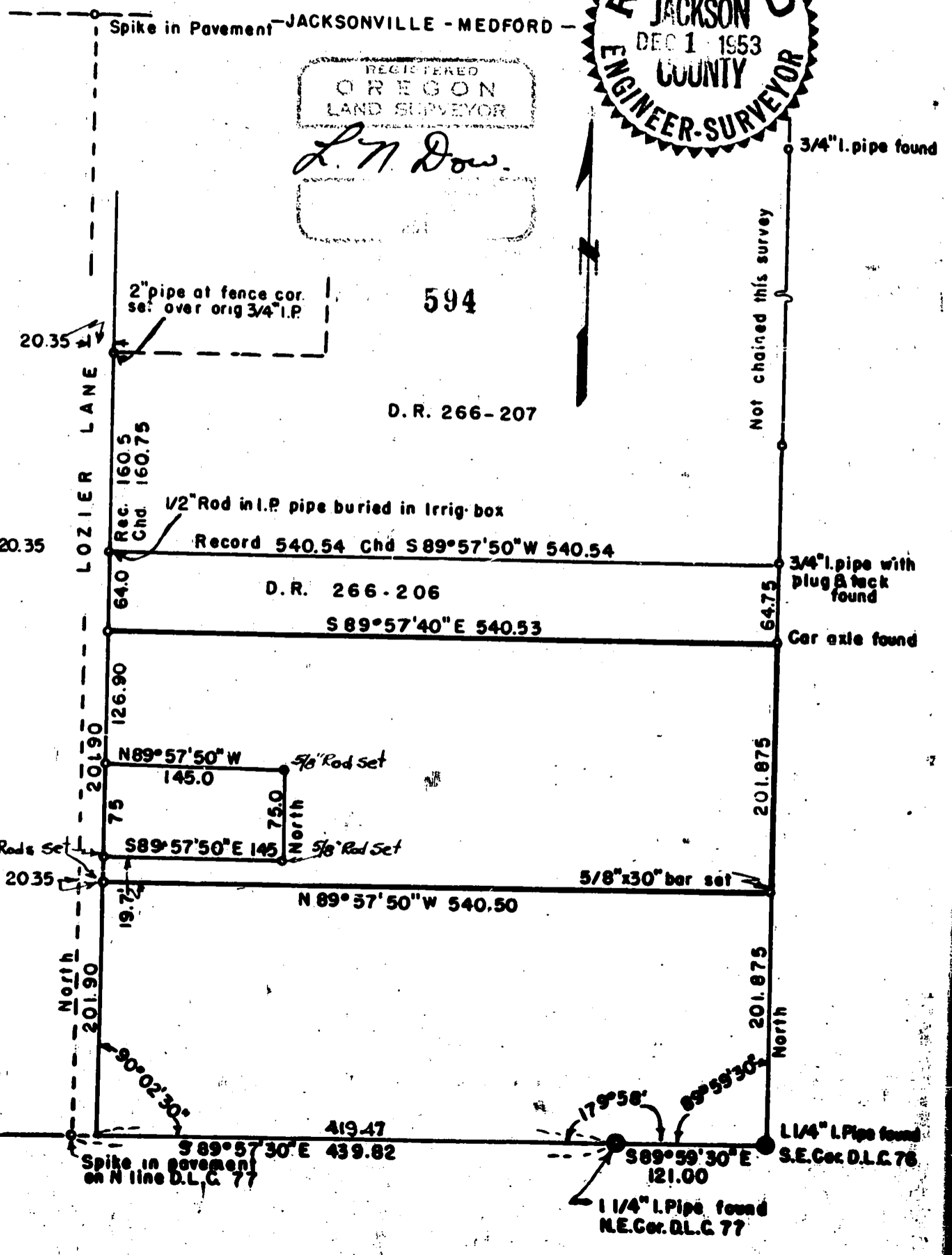
S 89° 57' 30" E 439.82
Spike in pavement on N line D.L.C. 77

S 89° 59' 30" E 121.00
1 1/4" I.Pipe found N.E. Cor. D.L.C. 77

1 1/4" I.Pipe found N.E. Cor. D.L.C. 77

1 1/4" I.Pipe found S.E. Cor. D.L.C. 76

3" x 8" Sandstone with cross
at OAK GROVE ROAD
N.W. Cor. D.L.C. 77



Written narrative to accompany plat for Survey No. 594
as specified by Oregon Law/

Survey for C.F. and Lucille Hoppe, Medford, Oregon.

Purpose to determine boundaries and lay out a 75 x 145 foot tract fronting on Lozier Land for the purpose of separating the property to acquire a loan, on the new house constructed thereon.

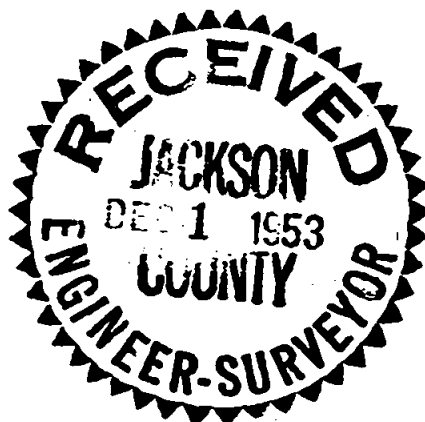
Survey completed November 21, 1953.

Procedure, Having previously found and used the 1 1/4" pipe corners at the SouthEast corner of D.L.C. 76 and the N.E. Corner of D.L.C. 77 and checked the line through to the Sandstone Rock on Oak Grove Road the N.W. Corner of D.L.C. 77 and at that time having checked the spike in the pavement on Lozier Land as being on the D.L.C. Line, the South line was established. No original Subdivision corners could be found on the South line. Next running North from the S.E. Corner of D.L.C. 76 and find a car axle at 403.75 feet which corner is the southeast corner of Deed Record 266-206, and a 3/4" iron pipe with plug and tach 64.75 feet farther for the northeast corner of 266-206 and continuing north another 3/4" iron pipe on line several hundred feet farther the distance not chained for this survey.

Next found the the East line of Lozier Land, pins were found at 467.80 feet north of the D.L.C. Line and at 628.3 feet North of the D.L.C. Line these pins check to be the West corners of Deed Record 266-207.

I then began at the S.E. Corner of D.L.C. 76 and ran North and set a 5/8" iron Bar at the distance of 201.875 feet the pro rate distance for 1/2 the lot; then ran N89°57'50"W 540.50 feet to the east line of Lozier Lane, then North 201.90 feet and set a 5/8" Iron Bar for the north west corner, which point is 64.0 feet south of a 1/2" red set in a 3/4" iron pipe buried in concrete for the Northwest corner of 266-206. I then ran S89°57'40"E 540.53 feet; then South 201.875 feet to the point of beginning.

Then the 75' x 145 foot tract was staked on the west side of the above tract as shown on the accompanying plat.



L. N. Dow.

