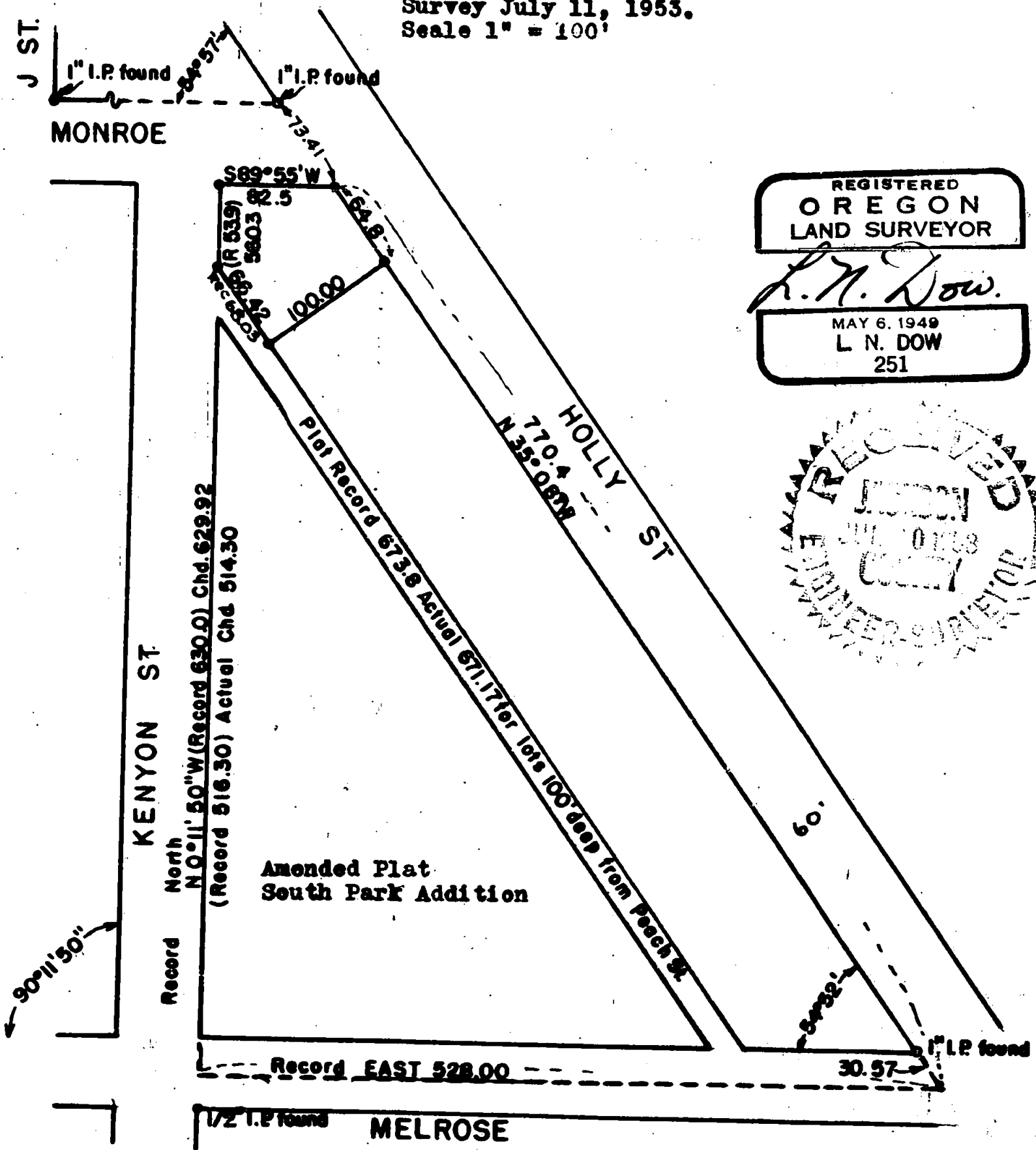


SURVEY FOR RUBY RUNDELL
704 S. Holly St.
Medford, Oregon.

Lots 1 & 2 Amended Plat SOUTH PARK ADDITION, to Medford, Oregon.

Survey July 11, 1953.
Scale 1" = 100'



REGISTERED
OREGON
LAND SURVEYOR

L. N. Dow

MAY 6, 1949
L. N. DOW
251



Written narrative to accompany plat for Survey No. 549

Survey for Mrs. Ruby Rundell, Medford, Oregon.

Survey Lots 1 & 2 Amended Plat, South Park Addition,
to the City of Medford, Jackson County, Oregon.

Date of Survey July 11, 1953.

A very close study of the Amended Plat of South Park Addition immediately discloses that the internal layout of the lots was intended to be a row of lots 100 feet in depth facing on Holly Street, these lots at 90° angle from South Holly, it also shows that ~~shows that~~ the lot distances as given on the plat for the remainder of the plat (after striking off the 100 foot tier of lots facing Holly Street) could not possibly be as the plat shows.

Pins in good order were found at the Northwest corner of Melrose and Holly, at the corners where Monroe intersects the west line of Holly, at the East side of J St, at Monroe, and at the Southeast corner of Kenyon and Melrose.

Boundary distances of the Amended Plat prove remarkably close to record. Bearings are in variance.

Using the above described pins angles were turned and the work chained and co-ordinated. The frontage on Holly being as record the pin was set for the southeast corner of Lot two at record distance from the corner of Monroe and Holly, thence run at right angles to Holly Street and set the pin for the southwest corner of Lot Two at a distance of 100 feet from Holly Street. Next run parallel to the north line of Monroe St. and set the northwest corner of Lot 1 82.5 feet from Holly St. then Run S0°11'50" E 56.03 feet and set angle corner at alley; then run S35°08'E parallel to Holly Street and tie to pin previously set at southwest corner of Lot 2 chained distance 66.42 feet from angle pin at alley.

