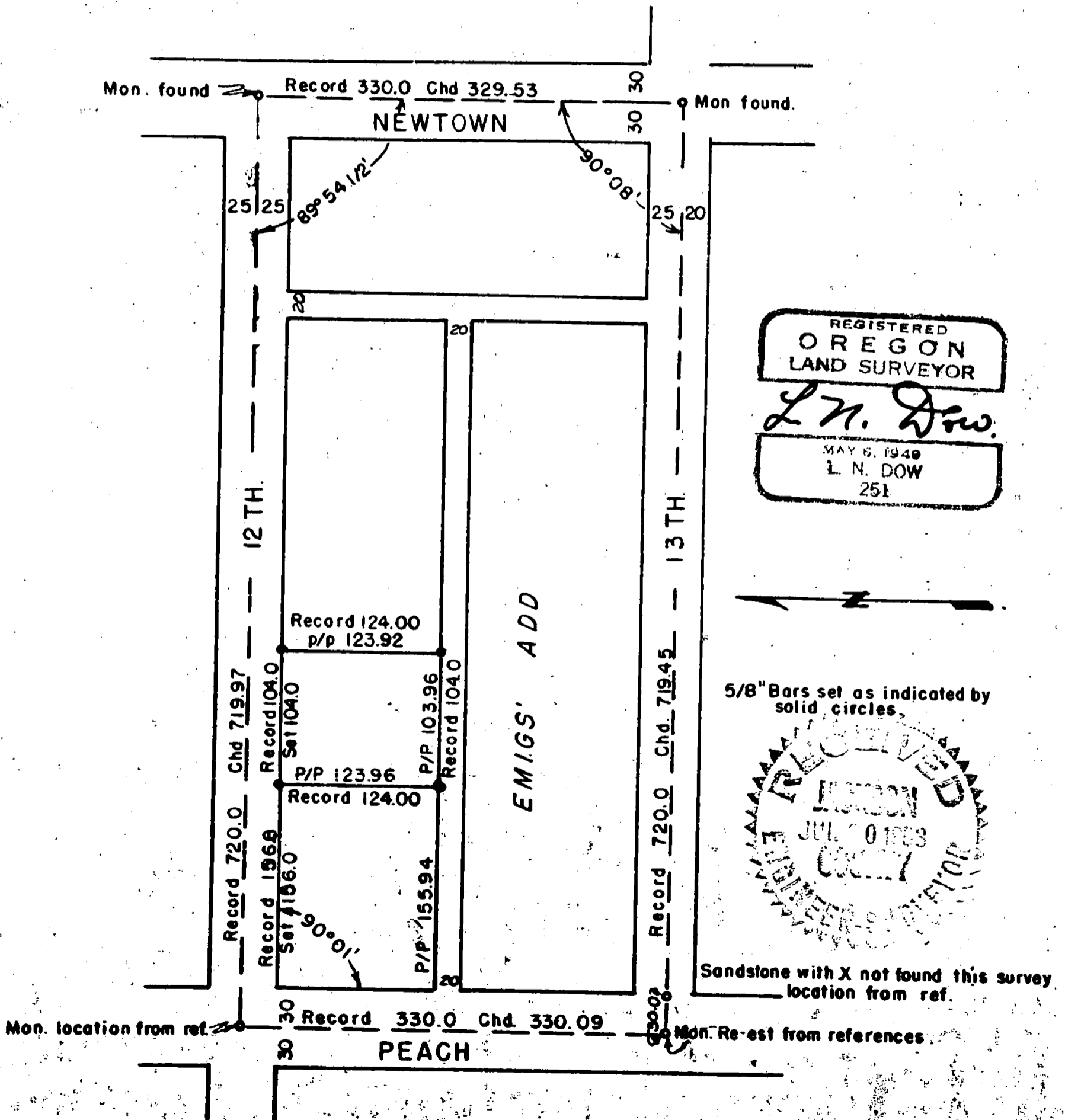


SURVEY FOR MR. VIRGIL BUSH

Lots 19 & 20 Emigs' Addition to the City of Medford, Oregon.

Survey Made July 11, 1953.



Written narrative to accompany plat for survey No. 548

Survey for Mr. Virgil Bush

Lots 19 & 20 Emigs' Addition to City of Medford, Oregon.

Survey made July 11, 1953.

Procedure; the location of the center monument at Peach and 12 street and at Peach and 13 street was set in from references taken before the monuments was covered with pavement. The monuments on Newtown at 12 and at 13 are available. Next all distances was chained around the entire block and angles turned; which information shows approximately plat distance on 12 street; 0.47 feet short of plat on Newtown from 12 to 13 th St; 0.55 feet short of plat distance on 13 th. St. from Newtown to Peach; and 0.09 feet long on Peach from 13 th. to 12 th Street.

With this information proportionate distances was solved and the survey completed with pins set for the outside corners of lots 19 and 20 as shown on the plat.

REGISTERED
OREGON
LAND SURVEYOR

L. N. Dow

MAY 6, 1949
L. N. DOW
251

