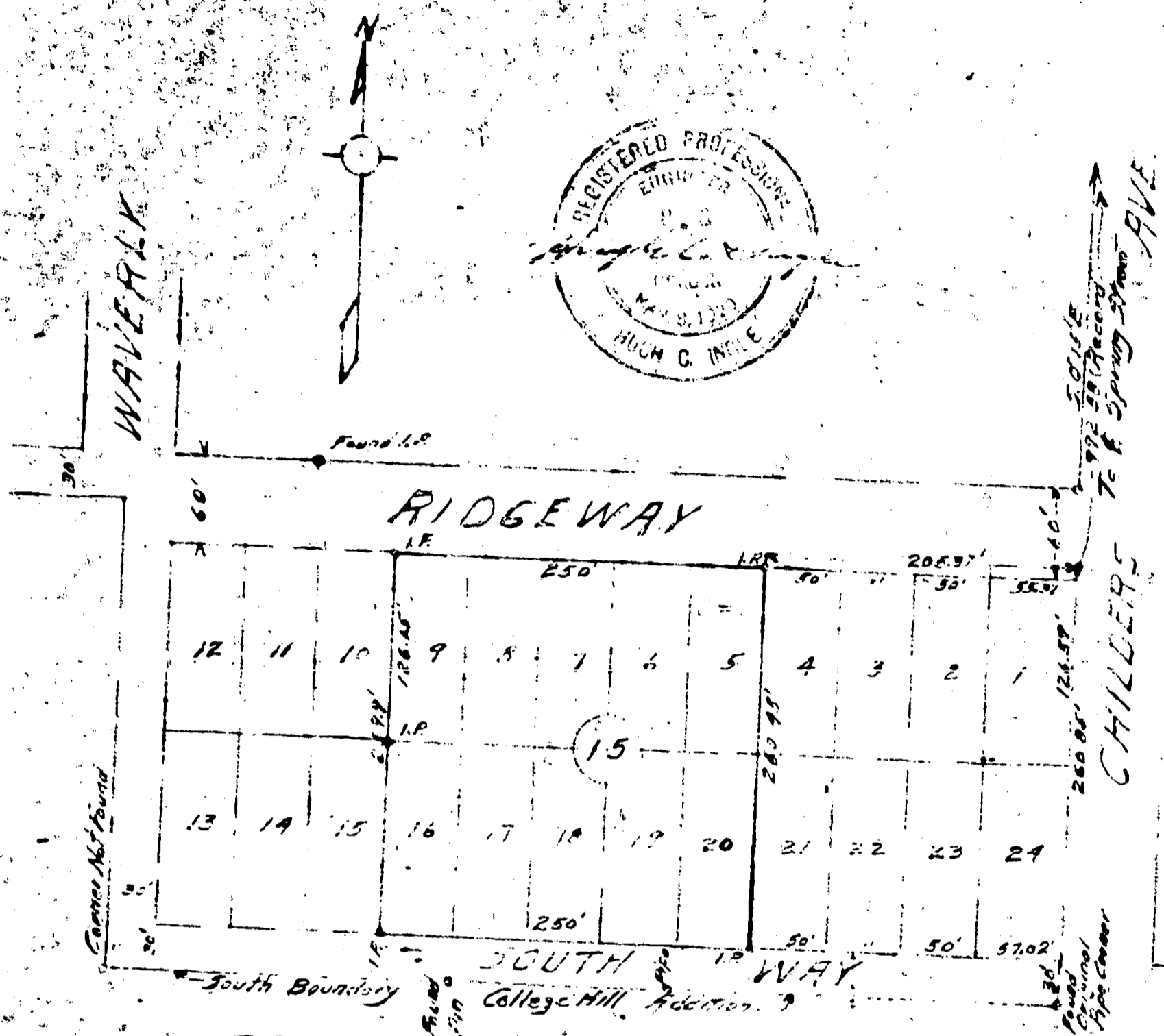


For Narrative, see Volume 2, Pages 50 and 51



EASTWOOD ADDITION

527  
 SURVEY  
 PORTION OF BLOCK 15  
 COLLEGE HILL ADDITION  
 Medford, Oregon  
 Jan. 23, 1955  
 Scale 1"=100'  
 Hugh C. Ingole  
 Civil Engineer

CHILDETS  
 TO E. SPRING ST. AVE.  
 FOUND I.P.  
 CORNER NOT FOUND  
 SOUTH BOUNDARY  
 COLLEGE HILL ADDITION  
 FOUND I.P.  
 CORNER NOT FOUND  
 SOUTH BOUNDARY  
 COLLEGE HILL ADDITION

NARRATIVE REPORT

Survey for Frank Saunders

Lots in College Hill Addition

Purpose of the survey was to establish corners of lots 5, 6, 7, 8, 9 and 16, 17, 18, 19 and 20 in Block 15 of College Hill Addition.

Procedure:-

An old pipe found at the Southeast corner of subdivision and recognized by old timers as original corner was used. East line of subdivision was established by means of lining above corner with Lot corner found north of Spring Street on previous surveys. Record Distance to South line of Ridgway Drive was measured from Center Line of Spring Street and line run West parallel to lot corner pins found on North side of street.

South line of Block 15 was established by pin at Southeast corner of subdivision and lining West on pins found on North line of Eastwood Addition. South line of Block was set 30 feet North. Pipes were set at the 4 corners of the lots group surveyed. Distance North and South showed surplus over record. Distance to Lot corners on North side of Ridgway Drive checked record.

