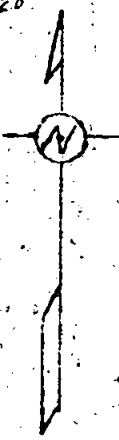
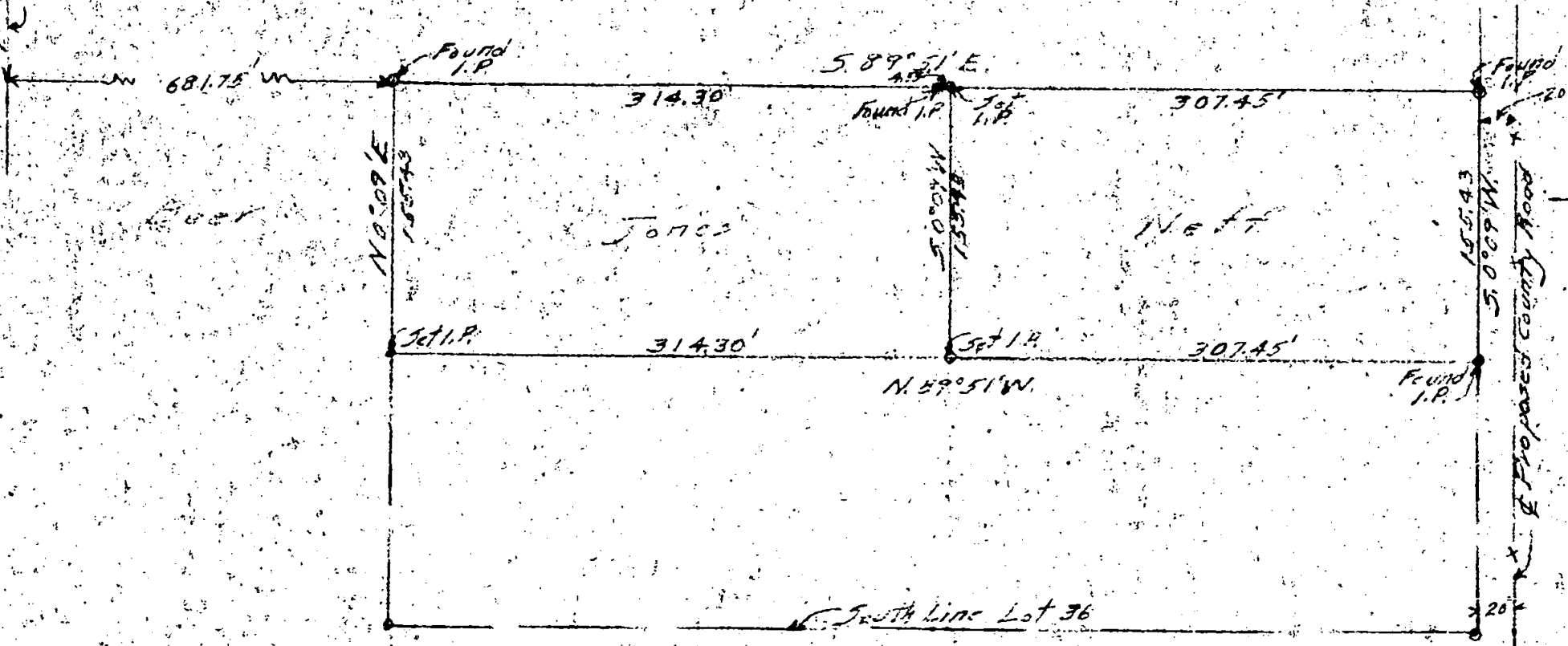
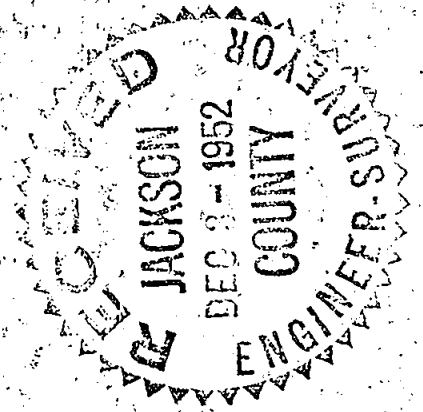


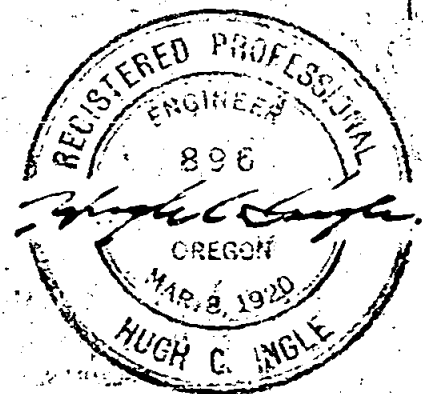
492

E SPRINGS STREET

Front line No. 151 W
College Hill Addition 962.58m
West Line Childers Ave



SUBDIVISION
OF
N 1/2 of S 1/2 LOT 36
CHILDERS EASTERN ADDITION
Medford Oregon
Section 20 T. 37 S. R. 1 W.
Scale 1" = 100' Hugh Cingle
Nov 13, 1952 Civil Engineer



12/2/52

NARRATIVE REPORTSURVEYS
CHILDERS EASTERN ADDITION

Purpose of this survey was to establish the East line for a portion of the North $\frac{1}{2}$ of the South $\frac{1}{2}$ of Lot 36 of Childers Eastern Addition. The east line of certain property being determined by agreement between seller and buyer and being relative to certain buildings on the property.

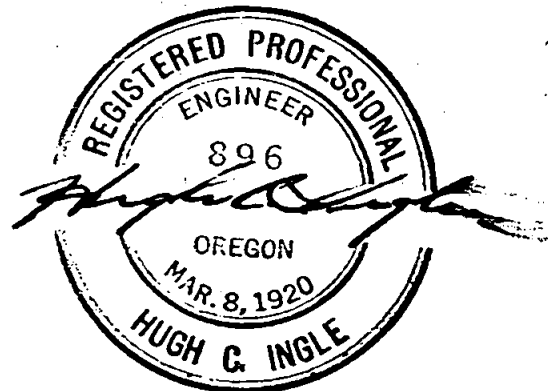
Procedure.

The North line of the property was determined by iron pipes established on a previous survey of Lot 35. These pipes were established by means of a survey from a recognized lot corner of College Hill Addition located North of Spring Street and on the line common to Childers Addition and the later College Hill Addition as recorded in County Records. The distance to center line of Spring Street checked with record and another recognized lot corner on same line South of Spring Street determined the course. This subdivision line checked by distance with old pins found on Waverly Street lines to the West.

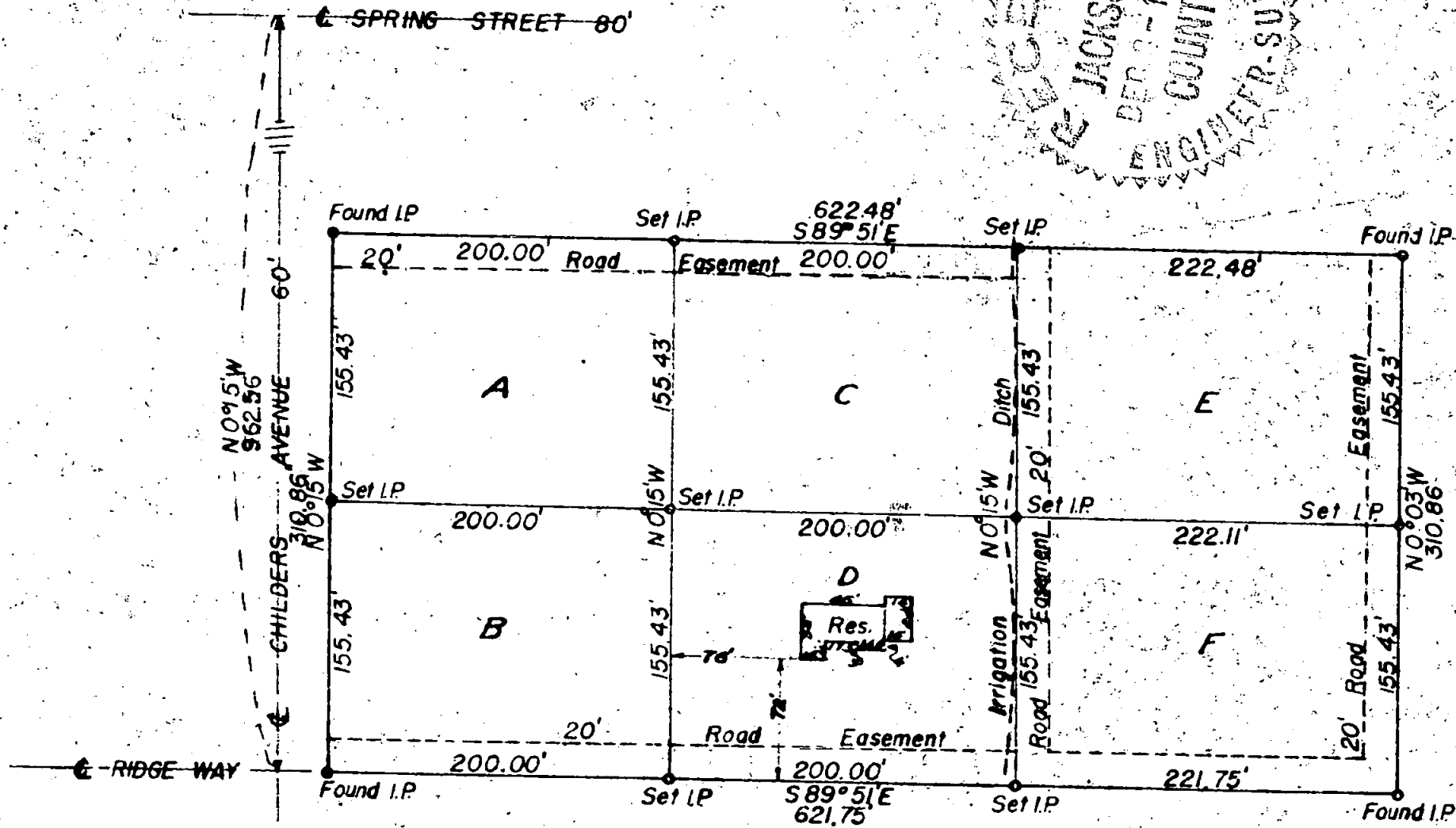
Record plat distance measured south from the center line of Spring Street checked with street lines on Ridge Way. Line was then run East to an established iron pin on the East line of Lot 36 and recognized as marking the Northeast corner of the South $\frac{1}{2}$ of Lot 36. The distance to this pin however checked 5.34 feet longer than record. However the point checked by line and distance with an old stake found to mark the Southeast corner of Eastern Addition and recognized as such.

The distance East and west was divided equally to establish the line between Lots 35 and 37 and as the middle line of Lot 36. Other lines were established on this basis.

Hugh C. Ingle.
Civil Engineer.



3 prints



SURVEY-PLAT
SUBDIVISION of LOT 35
CHILDERS ADDITION
Section 20 T 37 S R 1 W
MEDFORD, OREGON
 Dec. 15, 1948 Hugh C. Ingle
 Scale 1" = 100' Civil Engineer

