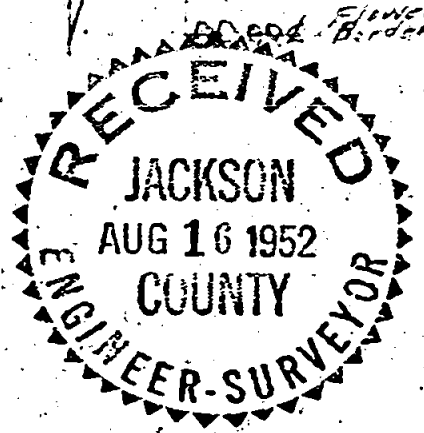
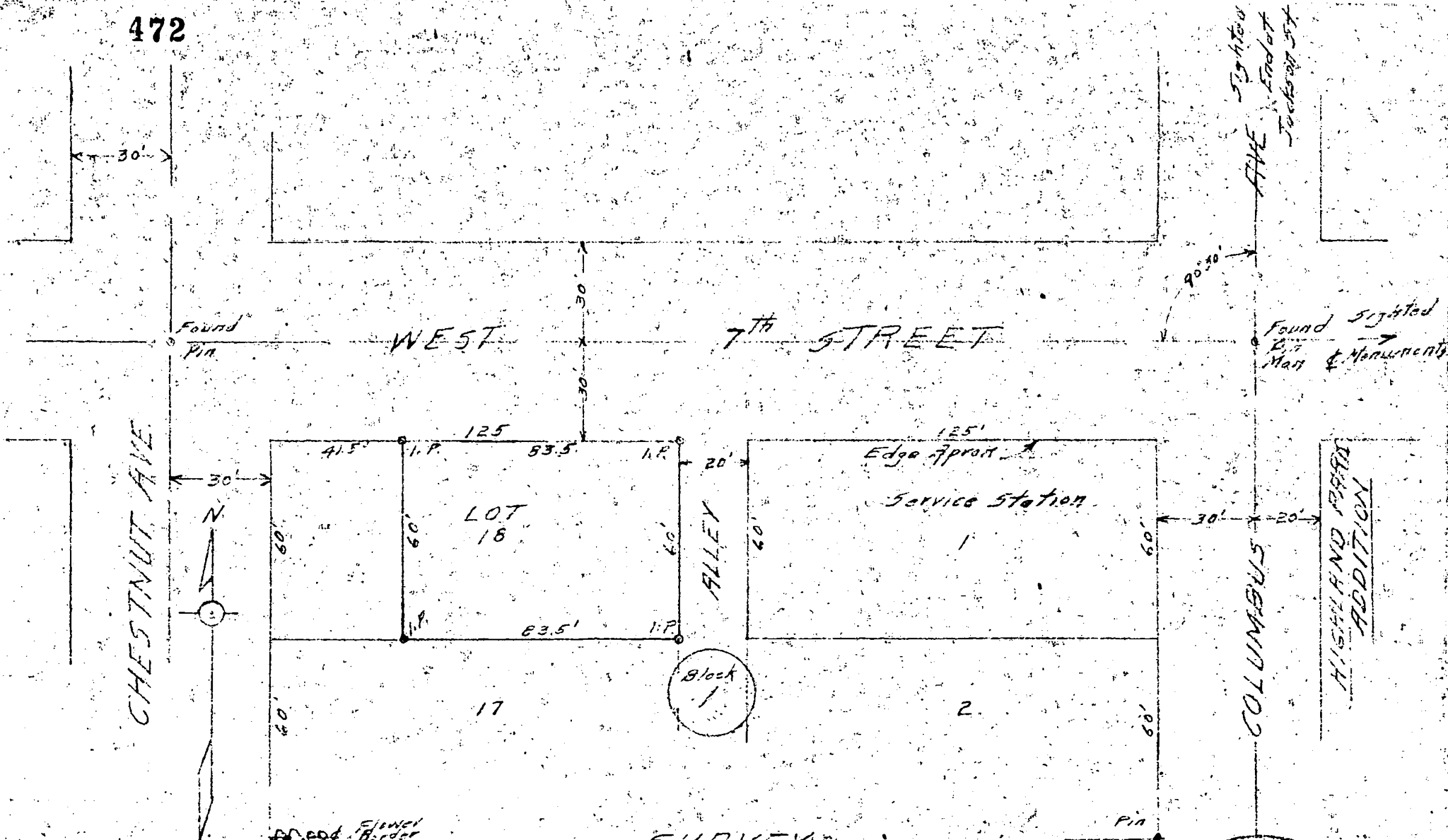
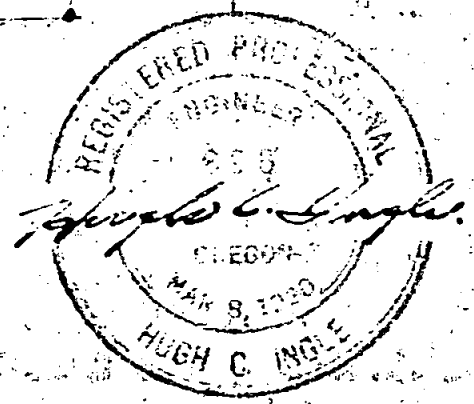


472



SURVEY
East 83.5 Feet
LOT 18 - BLOCK 1
WALNUT PARK ADDITION
City of Medford, Oregon
Scale 1" = 40' Hugh C. Ingle
July 19, 1952 Civil Engineer



Madford

472

Hugh C. Ingle for
McSwain.

NARRATIVE REPORT

SURVEY EAST 83.5 feet OF
LOT 18, BLOCK 1
WALNUT PARK ADDITION

The purpose of the survey was to determine the boundaries of the East 83.5 feet of the lot for location of a house.

As the subdivision plat provides for the North line of the lot to be 30 feet south of the center line of West 7th. St. (West Main St.) the street intersection monuments and pins found at Columbus and at Chestnut streets were used to establish the North line of the lot. Measurements were made west from the Monument at Columbus and checked in with total distance to center line of Chestnut. The north corners of the lot surveyed were set from such measurements. The south corners were set 60 feet south at the angle found for center lines of street at Columbus Street.

The North property line thus established was found to be the prolongation of the line of apron paving of the service station on the East and the prolongation of the center line of Main Street eastward agreed with established monuments.

Measurement over two lots southward checked with a flower bed border in which the owner of that lot claimed he had once had an iron pin. The East boundary of the lot checks with alley paving bordering the service station.

