

For Narrative, see Volume 2, Page 4

SISKIYOU TIMBER SERVICE
GRANTS PASS, OREGON

SURVEY OF PORTION OF EAST HALF

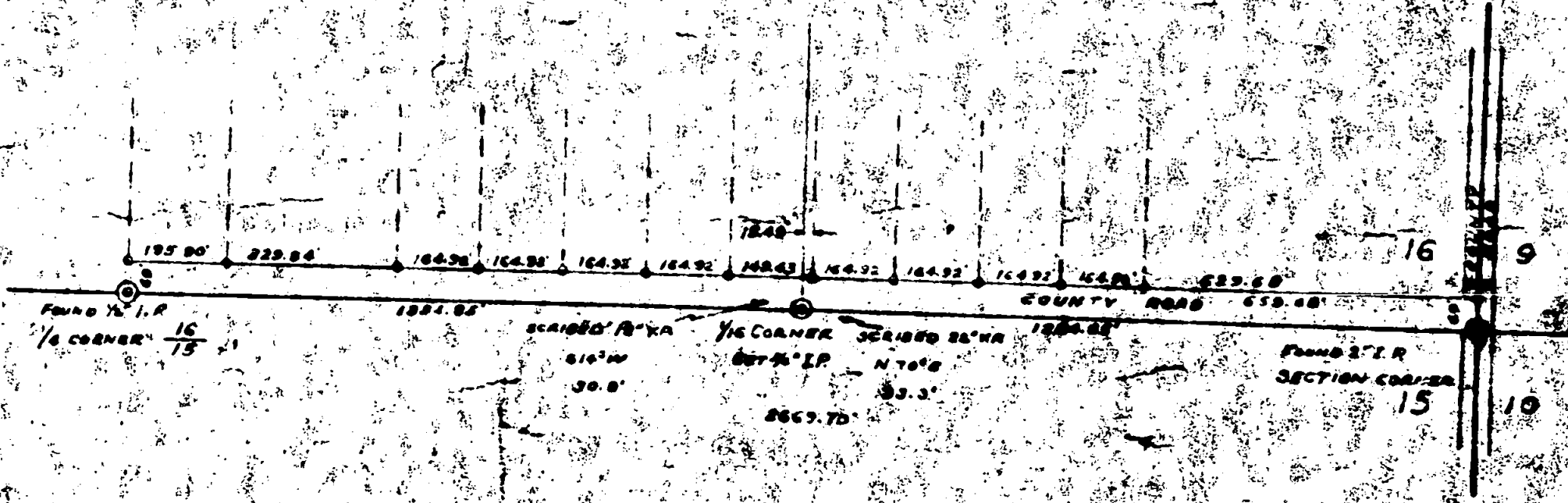
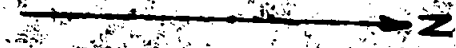
OF NE 1/4 OF SECTION 16

T. 38 S., R. 3 W., W.M.

JACKSON COUNTY

SCALE: 1"=30'

MARCH 15, 1952



FOUND 1/4 I.P.
1/4 CORNER 16/15

SCAILED TO 1/4 I.P.
1/4 CORNER SCAILED TO 1/4 I.P.

FOUND 2 1/2 I.P.
SECTION CORNER

NOTE: 1/4" I.P. SET AT ALL CORNERS



TIMBER CRUISING
APPRAISALS
TOPOGRAPHYLOGGING ENGINEERS
O. & C. RIGHTS-OF-WAY
LAND SURVEYING AND MAPPING*Siskiyou Timber Service*

ROOM 202

PHONE 3309

327 S.E. 6TH STREET
GRANTS PASS, OREGON

March 18, 1952

County Surveyor
Jackson County
Medford, Oregon

Procedure on Establishment of 1/16 corner for
S E corner of N E $\frac{1}{4}$ of N E $\frac{1}{4}$ of Section 16,
T 35 S, R 4 W., W. M.

This corner was set at request of George W. Rode, Medford. A straight line was run parallel to section line between $\frac{1}{4}$ corner between section 16 and 15 and section corner common to sections 9, 16, 15, and 10. This distance was found to be 2669.702 feet. A $\frac{3}{4}$ " I.P. was set at the mid point on the section line from which the following trees bear:

An 18" Ponderosa Pine S 14° W 30.8 Ft. scribed "1/16"
A 22" Ponderosa Pine N 70° E 33.3 ft. scribed "1/16"

The other data shown on the enclosed print are described in a previous letter.

