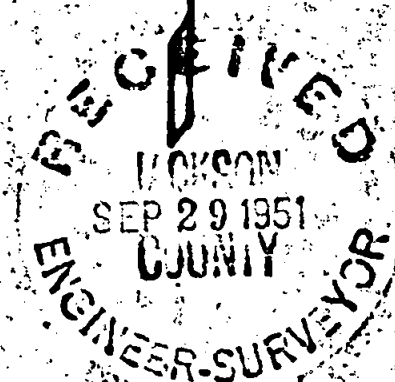
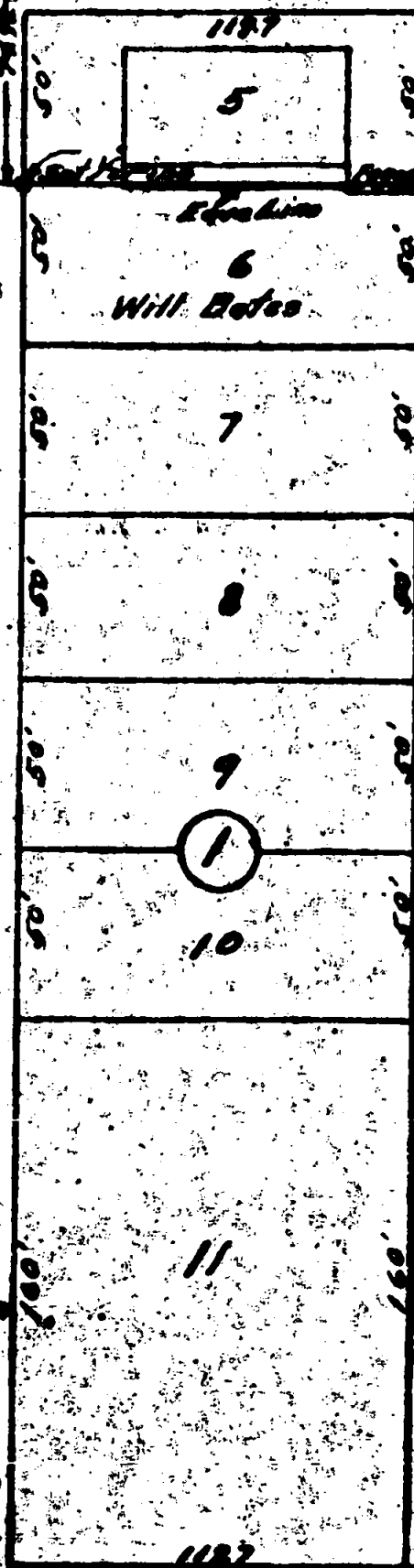


MINNESOTA ST.

Sight Street to
Hawthorn

GENEVA STREET



SURVEY-PLAT
LOT 6 BLOCK 1
HUMPHREY-KNIGHT ADD.

Humphrey Knight
Scale 1" = 60' *Hugh C. Goble*
Sept 19 1951 *Civil Engineer*



EAST MAIN STREET

NARRATIVE REPORTSURVEY for WILL BATESLOT 6, BLOCK 1HUMPHREY-KNIGHT ADDITION

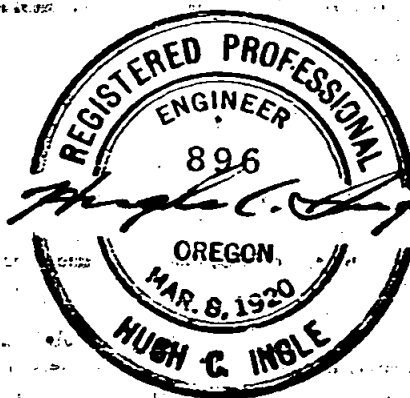
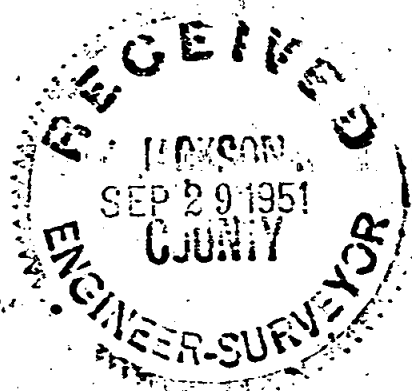
The purpose of the survey was to establish the northwest corner of Lot 6 and to check the location of a portion of fence built West from the Northeast corner.

Center line of East Main street was established by line between monuments and checking of a cup tack found at the intersection of Geneva and East Main, which was found to be correct. Measurement was carried along the East side of Geneva on property line and run north the recorded lot distances of the subdivision to the Northeast corner of Lot 6. Distance was then checked to monument at Minnesota street and total distance was found to be .75 feet short of record. This distance was also checked directly along center line of Geneva street.

Center line of Minnesota was then established and distance measured to north edge of curb of existing fence from center line of Minnesota and found to be even. 75.00 feet, which is slightly greater than proportioned distance and placed the Bates fence within boundary of Lot 6. Eaves of the house on Lot 7 show slight overhang onto Lot 6.

A $\frac{1}{2}$ " pipe was placed at northwest corner of Lot 6, a distance of 74.92 feet South from center line of Minnesota street.

HUGH C. INGLE



NARRATIVE REPORTSURVEY for WILL BATESLOT 6, BLOCK 1HUMPHREY-KNIGHT ADDITION

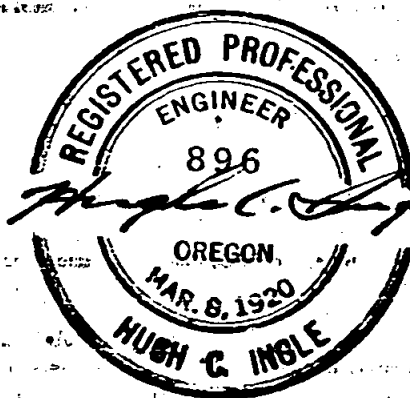
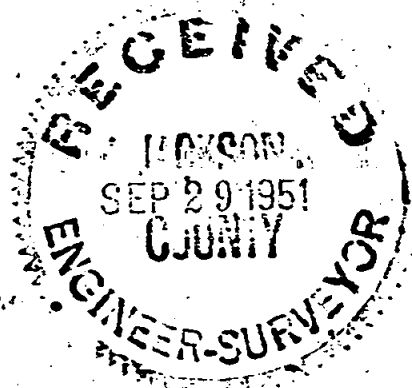
The purpose of the survey was to establish the northwest corner of Lot 6 and to check the location of a portion of fence built West from the Northeast corner.

Center line of East Main street was established by line between monuments and checking of a cup tack found at the intersection of Geneva and East Main, which was found to be correct. Measurement was carried along the East side of Geneva on property line and run north the recorded lot distances of the subdivision to the Northeast corner of Lot 6. Distance was then checked to monument at Minnesota street and total distance was found to be .75 feet short of record. This distance was also checked directly along center line of Geneva street.

Center line of Minnesota was then established and distance measured to north edge of curb of existing fence from center line of Minnesota and found to be even. 75.00 feet, which is slightly greater than proportioned distance and placed the Bates fence within boundary of Lot 6. Eaves of the house on Lot 7 show slight overhang onto Lot 6.

A $\frac{1}{2}$ " pipe was placed at northwest corner of Lot 6, a distance of 74.92 feet South from center line of Minnesota street.

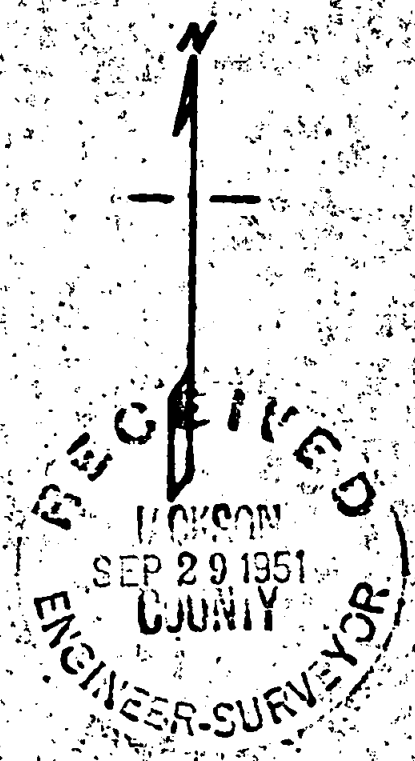
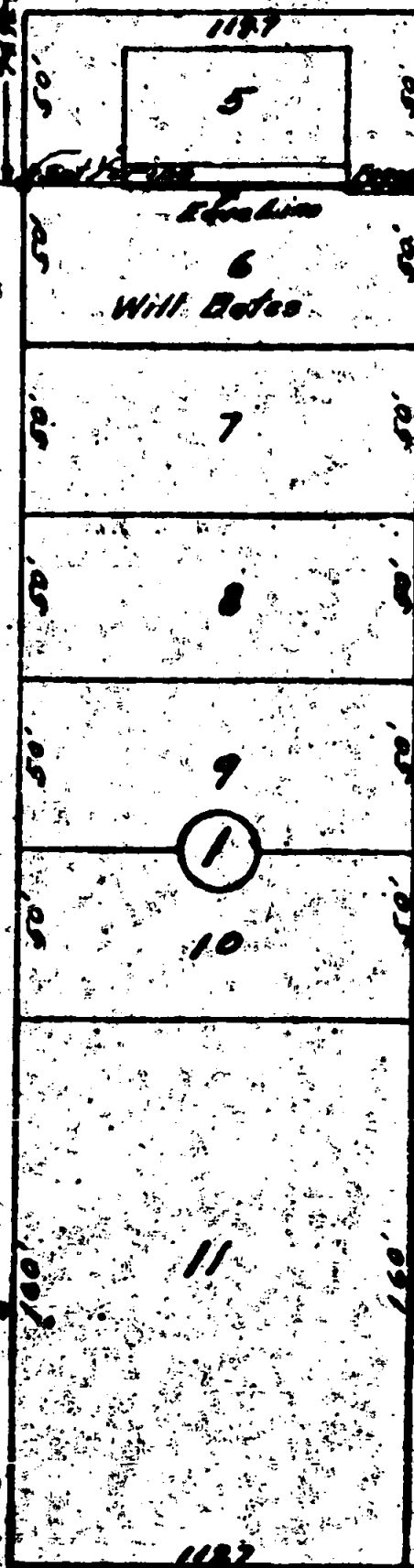
HUGH C. INGLE



MINNESOTA ST.

Sight Street to
Main Street

GENEVA STREET



SURVEY-PLAT
LOT 6 BLOCK 1
HUMPHREY-KNIGHT ADD.

Madford, Oregon
Scale 1"=60' Hugh C. Gage
Sept 19 1951 Civil Engineer



EAST MAIN STREET