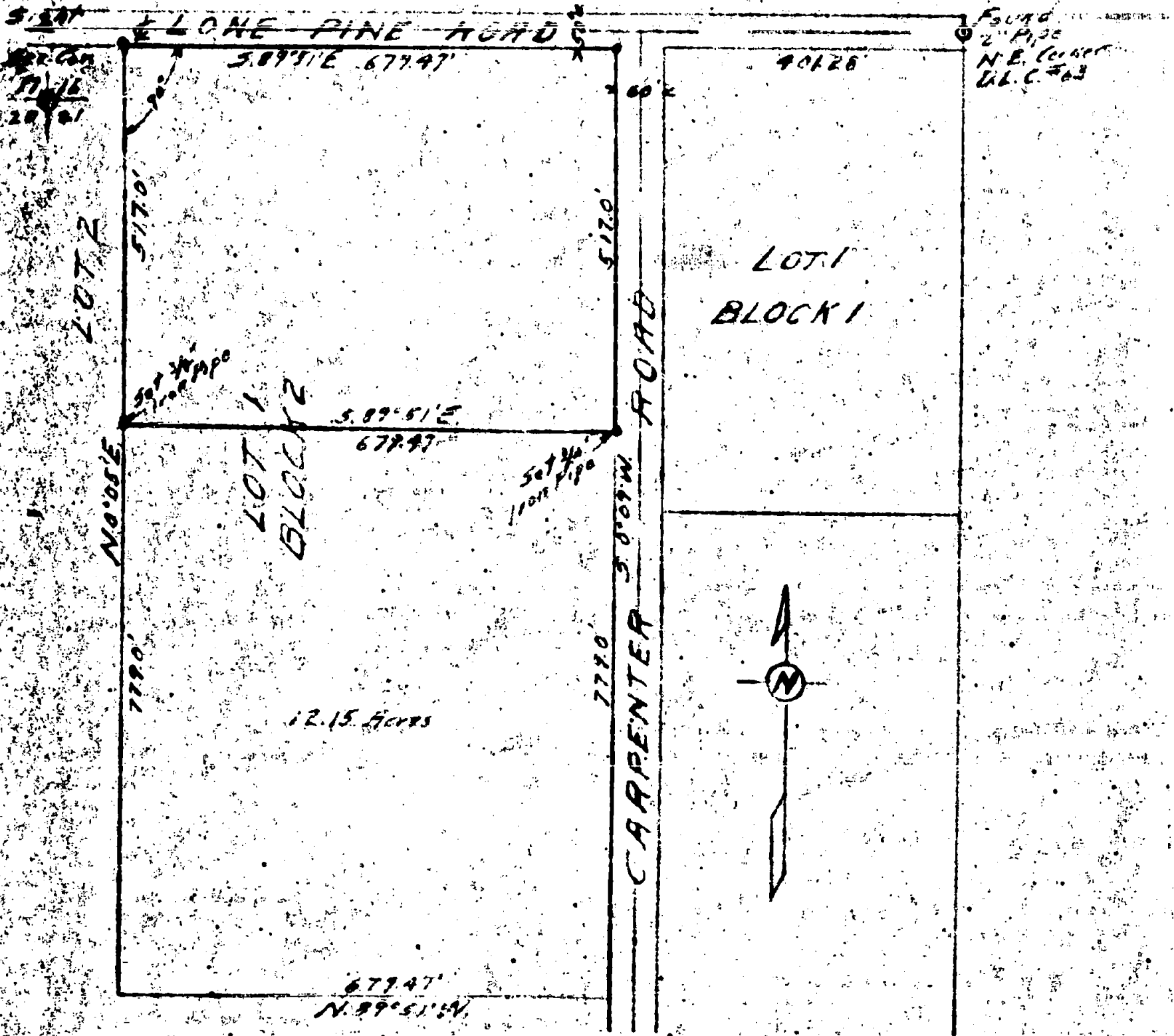
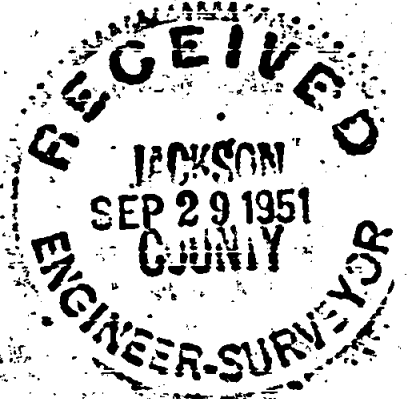


For Narrative, see Volume 1, Page. 229



PARTITION SURVEY  
FRED STEVENS PROPERTY  
LOT 1 BLOCK 2  
PIERCE SUBDIVISION  
Jackson County, Oregon  
 Scale 1" = 200'  
 Sept. 10, 1950

Hugh C. Ingle  
 Civil Engineer



NARRATIVE REPORTFred Stevens PropertyPIERCE SUBDIVISION

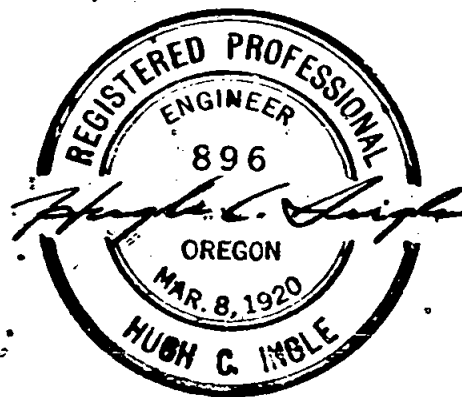
Survey was made to determine line and description of orchard property at South end of Lot 1, Block 2, of Pierce Subdivision.

North line was determined by running from Northeast corner of Donation Land Claim #63, Township 37 South, Range 1 West of Willamette Meridian, identified by pipe reestablishment by Jackson County. Line was then run West by sighting reestablished Corner common to Sections 16, 17, 20 and 21, and the Northeast and Northwest Corner of Lot 1, Block 2, established at plat record distances from the Donation Land Claim Corner and 25 feet South of Donation Land Claim line.

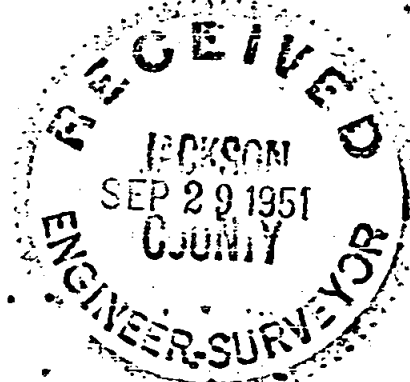
East and West boundaries of the lot were established by control lines and South Lot line was determined by record measurement.

Old existing fences checked very close to survey lines with the exception of East line which is irregular because of meandering road line.

Pipes were set at North Corners of the South portion of the Lot as requested by owner.



HUGH C. INGLE,  
Civil Engineer



NARRATIVE REPORTFred Stevens PropertyPIERCE SUBDIVISION

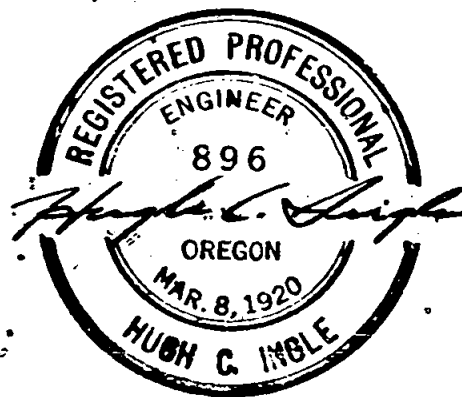
Survey was made to determine line and description of orchard property at South end of Lot 1, Block 2, of Pierce Subdivision.

North line was determined by running from Northeast corner of Donation Land Claim #63, Township 37 South, Range 1 West of Willamette Meridian, identified by pipe reestablishment by Jackson County. Line was then run West by sighting reestablished Corner common to Sections 16, 17, 20 and 21, and the Northeast and Northwest Corner of Lot 1, Block 2, established at plat record distances from the Donation Land Claim Corner and 25 feet South of Donation Land Claim line.

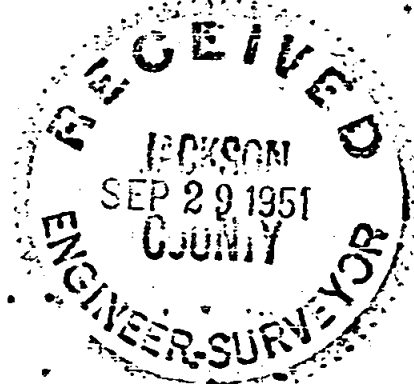
East and West boundaries of the lot were established by control lines and South Lot line was determined by record measurement.

Old existing fences checked very close to survey lines with the exception of East line which is irregular because of meandering road line.

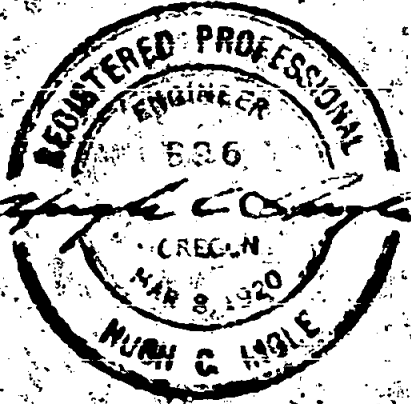
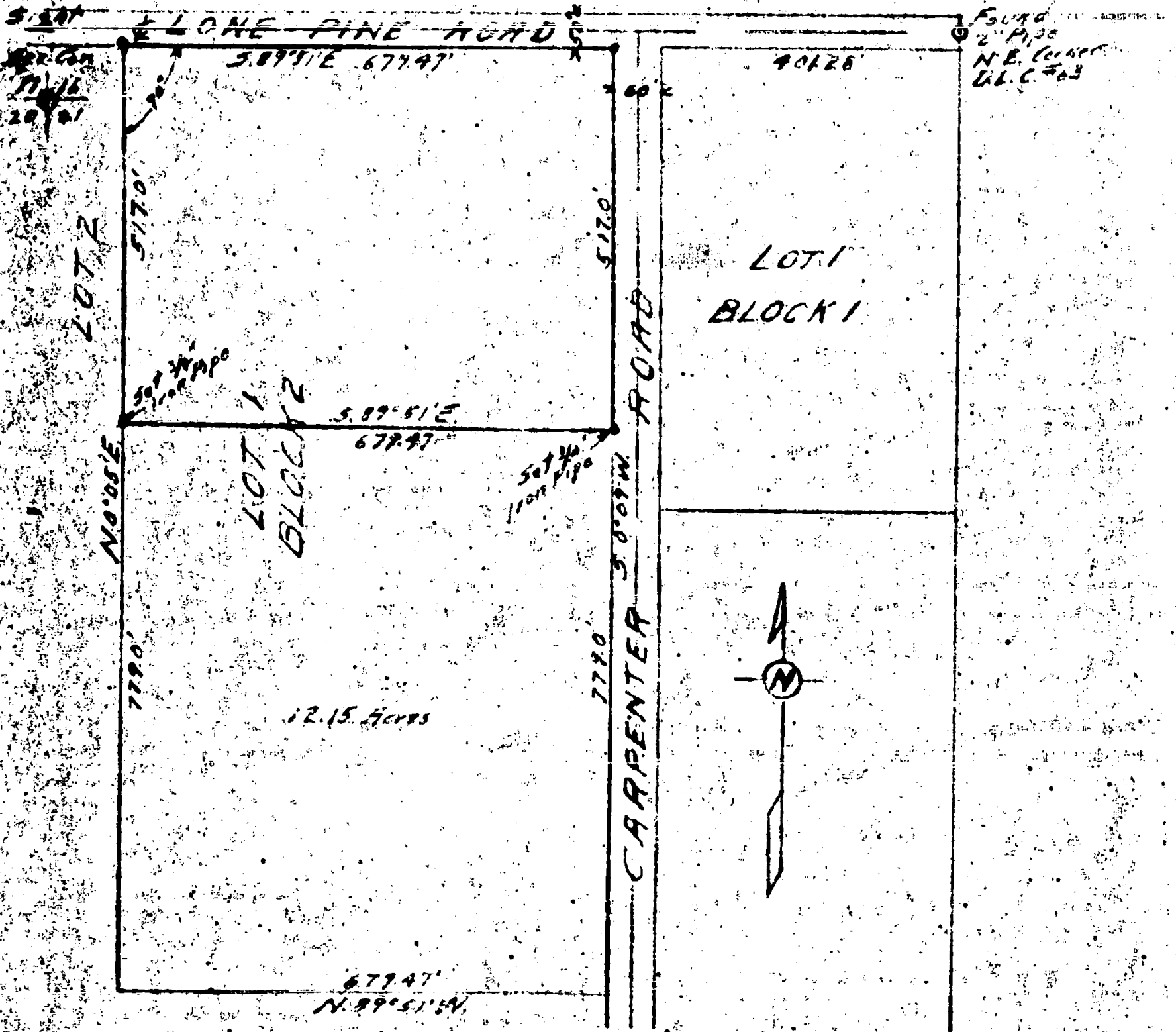
Pipes were set at North Corners of the South portion of the Lot as requested by owner.



HUGH C. INGLE,  
Civil Engineer



For Narrative, see Volume 1, Page. 229



PARTITION SURVEY  
FRED STEVENS PROPERTY  
LOT 1 BLOCK 2  
PIERCE SUBDIVISION  
Jackson County, Oregon  
 Scale 1" = 200'  
 Sept. 10, 1950

Hugh C. Ingle  
 Civil Engineer

