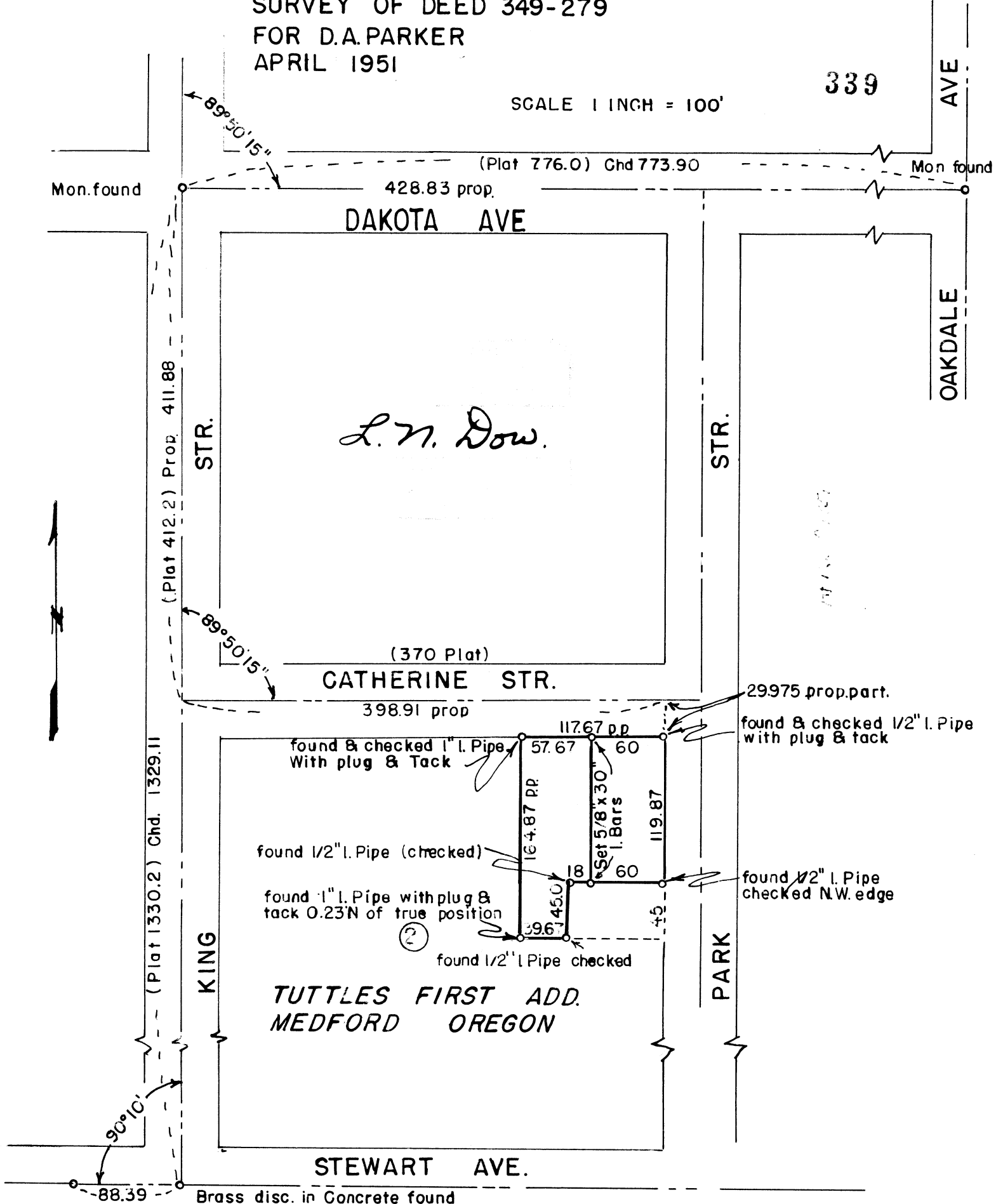


SURVEY OF DEED 349-279
 FOR D.A.PARKER
 APRIL 1951

SCALE 1 INCH = 100'

339

AVE



Stone with cross found
 NW.Cor. D.L.C. No. 85

339

Page 213

339

Written narrative to accompany plat for survey No. _____ as specified by Oregon Law.

Survey for D.A.Parker, Medford,, Oregon.

Purpose of survey, to stake outside boundaries of Deed 349- 279 and redivide as requested.

Date of survey April 21, 1951.

Procedure, began at a brass disc in concrete monument at the center of Kinh Street and Stewart Avenue 88.39 feet east of the northwest corner of D.L.C. No. 85. thence ran north along the center of King Street to a concrete monument with brass plug at the center of King and Dakota Ave, and find the overall north and south distance to be 1.09 feet shorter than plat distance, therefore proportionate measurement required to lay out lots in the north and south dimension.

Next ran East on the center of Dakota Avenue to the monument at the center of Dakota and Oakdale Ave and find this distance to be 2. 10 feet shorter than plat, therefore proportionate distances required to lay out lots in the east and west dimension.

Next set the center of Catherine Street and the center of King Street by proportionate distance from Dakota Ave a distance of 411.88 feet from the monument at Dakota Ave.

Then ran East on the Center Of Catherine Street parallel to Dakota Ave proportionate distance of 398.91 feet to a point opposite the North east corner of Block 2 Tuttle's First Addition to the City of Medford. Then ran south parallel to King Street on the west boundary of Park street a distance of (by proportion 29.975) feet to the northeast corner of Lot 1 at which point found and checked a 1/2" Iron Pipe with plug and Tack, set by previous surveyor. Then continuing south on the easterly line of lot 1 by proportionate measurement a distance of 119.87 feet and find and check a 1/2" iron pipe with plug and tack, then ran west parallel to Catherine Street 78.0 feet and find and check a 1/2" iron pipe with plug and tack Next run south parallel to King Street a distance of 45.0 feet and find and hit a 1/2" Iron Pipe with plug and tack, then run west parallel to Catherine Street a distance of 39.67 feet and find a 1" Iron Pipe at the proper distance but 0. 23 feet north of the true position for this point. Next ran north parallel to King Street a distance (proportioned) of 164.87 feet and find a 1" Iron Pipe with plug and tack for the north west corner of this property , this point proves to be very correct. Then ran East on the north line of lot 1 and lot 2 a distance of (by proportion) 117.67 feet to the point of beginning.

