

350

350

# SURVEY OF LOT 14, BLOCK 5, AMENDED PLAT OF EUGLID PARK ADDITION

## TO THE CITY OF MEDFORD, OREGON.

SURVEY MADE MARCH 23, 1951

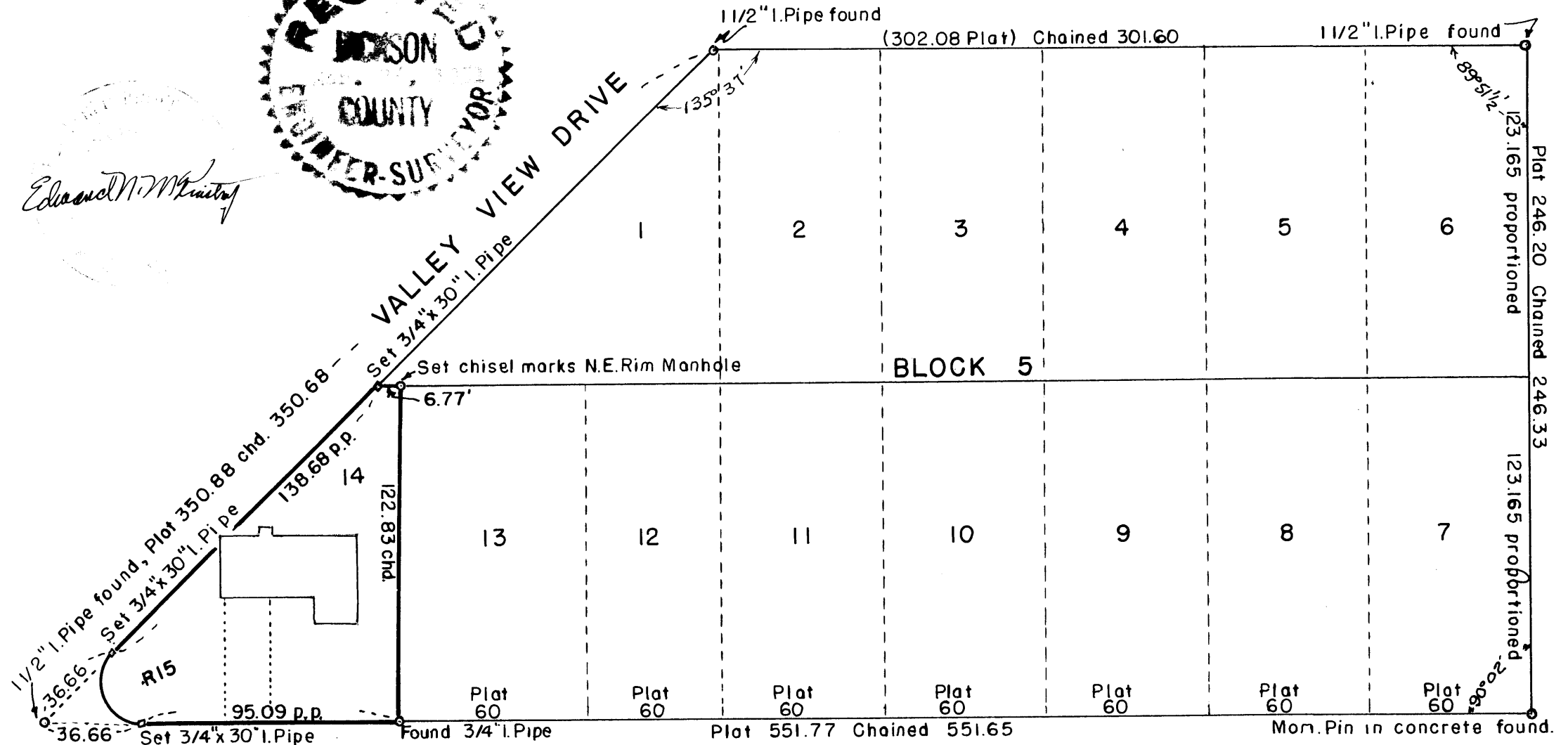
by City Of Medford Engineering Dept.

Scale 1" = 50'



*Edmond N. McIntire*

### RUHL WAY



### EAST MAIN STR

330

Written narrative to accompany plat for Survey No. \_\_\_\_\_

As specified by Oregon Law.

Purpose of Survey, to stake Lot 14, Block 5, Amended plat Euclid Park Addition to the City of Medford, Oregon, and locate house on property to show encroachment on Valley View Drive.

Date of Survey, March 23, 1951.

Made by City of Medford Engineering Department.

Procedure: A field search at the corners of Block 5 finds intact a concrete monument at the Southeast corner, a 1½" Iron Pipe Monument at the Northeast corner of Block 5, a 1½" Iron Pipe Monument at the Northwest corner and a 1½" Iron Pipe Monument at the Southwest corner of Block 5. Also a ¾" Iron Pipe at Southerly corner between Lots 14 and 13. A closure by chainage and angles of this block shows that the existing monuments vary somewhat in distances from the filed plat. Therefore proportionate distances were computed and the lot staked using these distances, and points set in the field at the Northeast corner, Northwest corner and on the two 15-foot radius return points at the Southwest corner, using the original ¾" Iron Pipe at the Southeast corner of said Lot 14.

