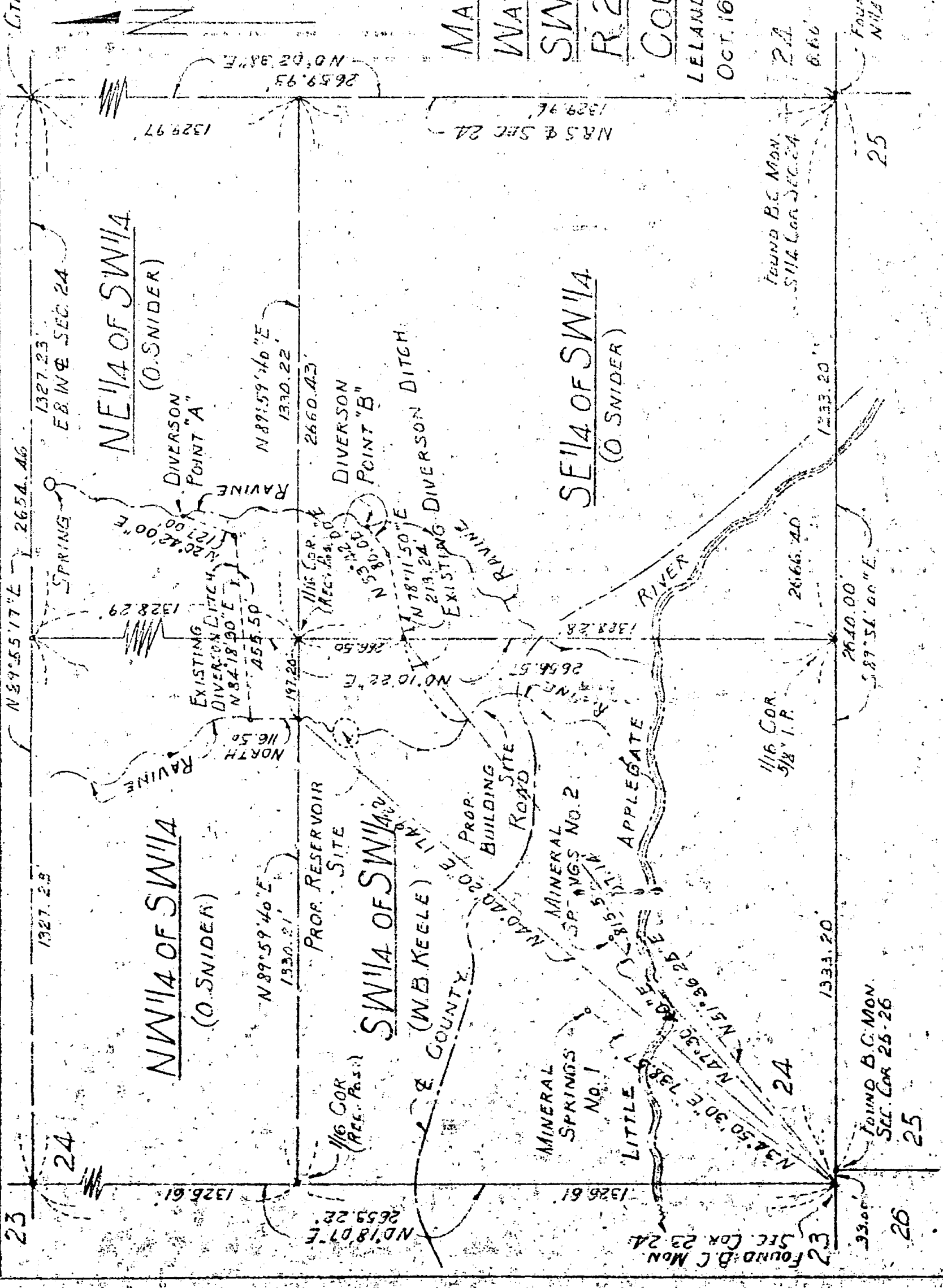


RECEIVED  
 JACKSON COUNTY  
 MAR 20 1951  
 ENGINEER-SURVEYOR

NOTE: SUBDIVISION OF SW 1/4  
 BASED ON RECORD BEARINGS  
 AND DISTANCES

MAP SHOWING PROPOSED  
 WATER DIVERSION IN  
 SW 1/4 OF SEC. 24 T. 39S.  
 R. 2 W., W. M. JACKSON  
 COUNTY OREGON

LELAND P. LOVEJOY - MEDFORD, ORE.  
 OCT. 16, 1950 SCALE 1" = 300'



GTR. SEC. 24

1327.23

1327.23

1327.23

1327.23  
 E. B. IN SEC. 24

1327.23

1327.23

1327.23

NE 1/4 OF SW 1/4  
 (O. SNIDER)

NW 1/4 OF SW 1/4  
 (O. SNIDER)

SW 1/4 OF SW 1/4  
 (W. B. KEELE) IN  
 JACKSON COUNTY

SE 1/4 OF SW 1/4  
 (O. SNIDER)

FOUND B.C. MON.  
 SW 1/4 COR. SEC. 24

FOUND B.C. MON.  
 SEC. COR 25-26

FOUND B.C. MON.  
 NW 1/4 COR. SEC. 25

23

24

24

24

25

25

26

1326.61

1326.61

1326.61

1326.61

1326.61

1326.61

1326.61

1326.61

1326.61

1326.61

1326.61

1326.61

1326.61

1326.61

1326.61

1326.61

1326.61

1326.61

1326.61

1326.61

1326.61

1326.61

1326.61

1326.61

1326.61

1326.61

1326.61

1326.61

1326.61

1326.61

1326.61

1326.61

1326.61

1326.61

1326.61

1326.61

1326.61

1326.61

1326.61

1326.61

1326.61

1326.61

1326.61

1326.61

1326.61

1326.61

Survey Narrative to Comply with Section 87-330,

1947 Oregon State Laws.

Survey for: Mr. W. B. Keele  
Jacksonville, Oregon.

Purpose of Survey: To locate South Line of Section 24, Township 39 South, Range 2 West, Willamette Meridian.

Survey Location: Section 24, Township 39 South, Range 2 West, Willamette Meridian, Jackson County, Oregon.

Survey Procedure: Located Section Corner common to Sections 23 and 24. Said Corner being a brass capped monument from which the Section Corner common to Sections 25 and 26, being also a brass capped monument, bears South  $89^{\circ} 56' 00''$  East 33.00 feet. Triangulated and traversed to the South One-Quarter ( $1/4$ ) Section Corner of Section 24, said Corner being a brass capped monument from which a brass capped monument at the North One-Quarter ( $1/4$ ) corner of Section 25 bears South  $89^{\circ} 56' 00''$  East 6.6 feet. The calculated distance between the One-Quarter ( $1/4$ ) and Section Corner of Section 24, was very close to 2666.40 feet, which was the record distance on the General Land Office Survey of 1917. Set a  $5/8''$  iron pin for the Sixteenth Corner, midway between the Section and One-Quarter ( $1/4$ ) corner.

Leland P. Lovejoy, Registered Land Surveyor.

Work completed March 1, 1951.

1951  
JAN 1  
COUNTY