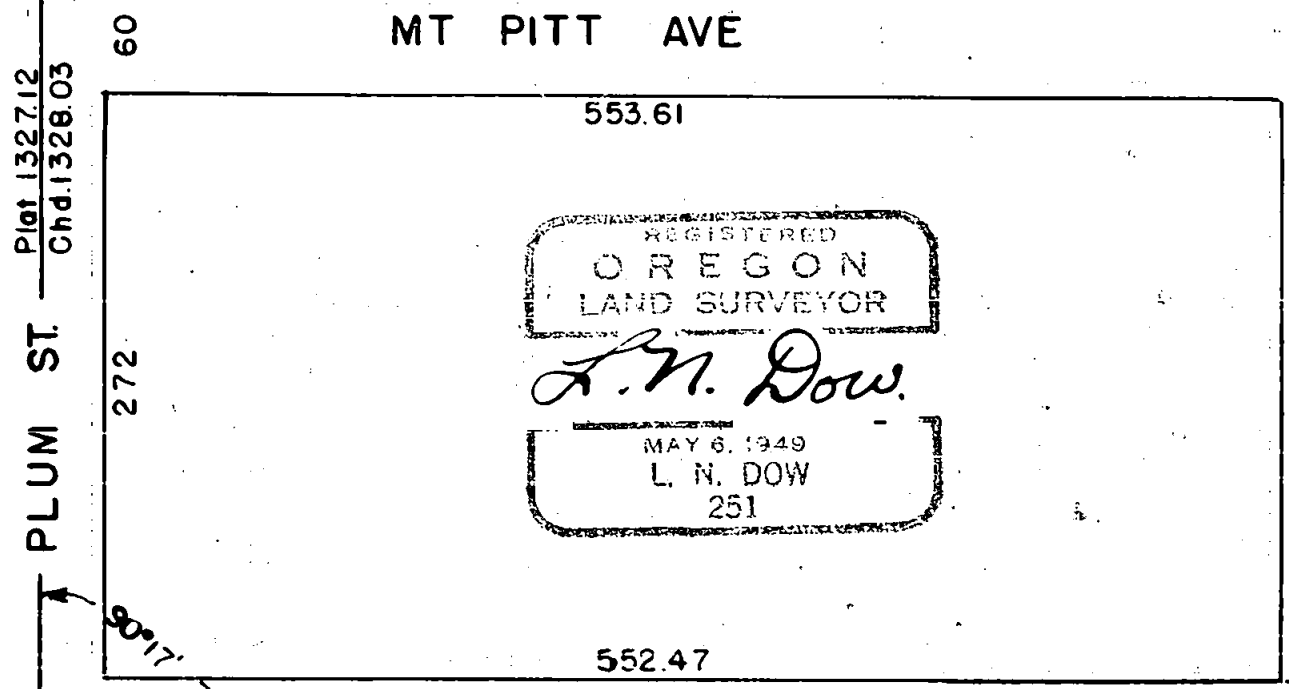
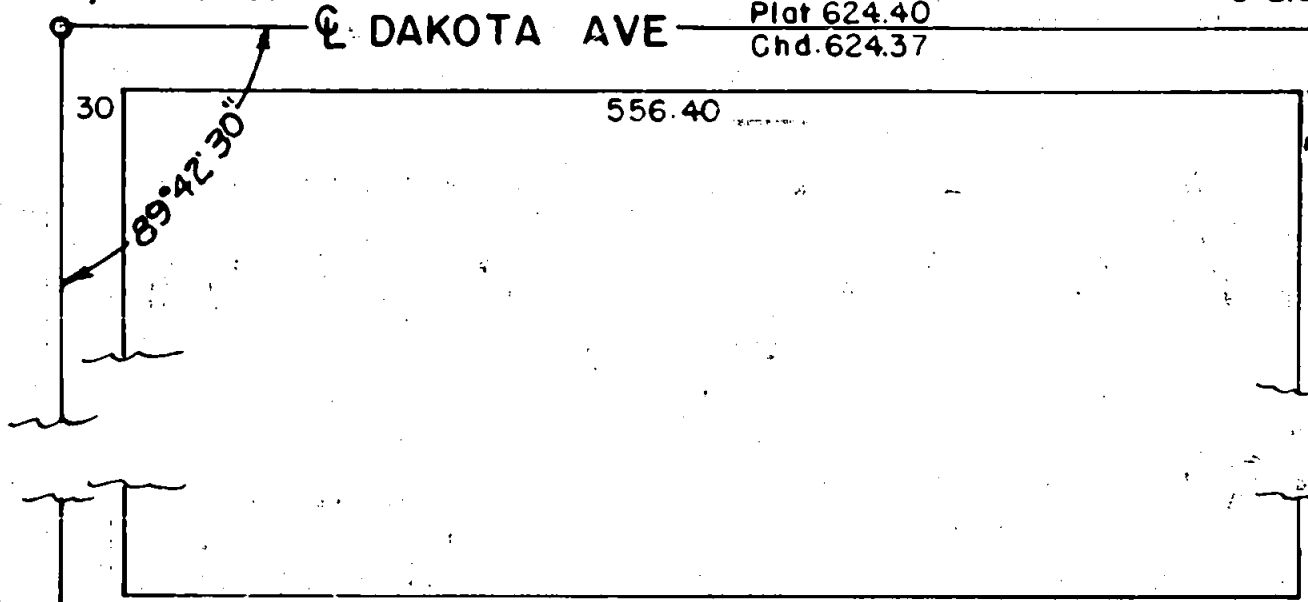


Lots 67, 68, 69 & Part 70 WINCHESTER PLACE ADD.  
CITY OF MEDFORD, OREGON.

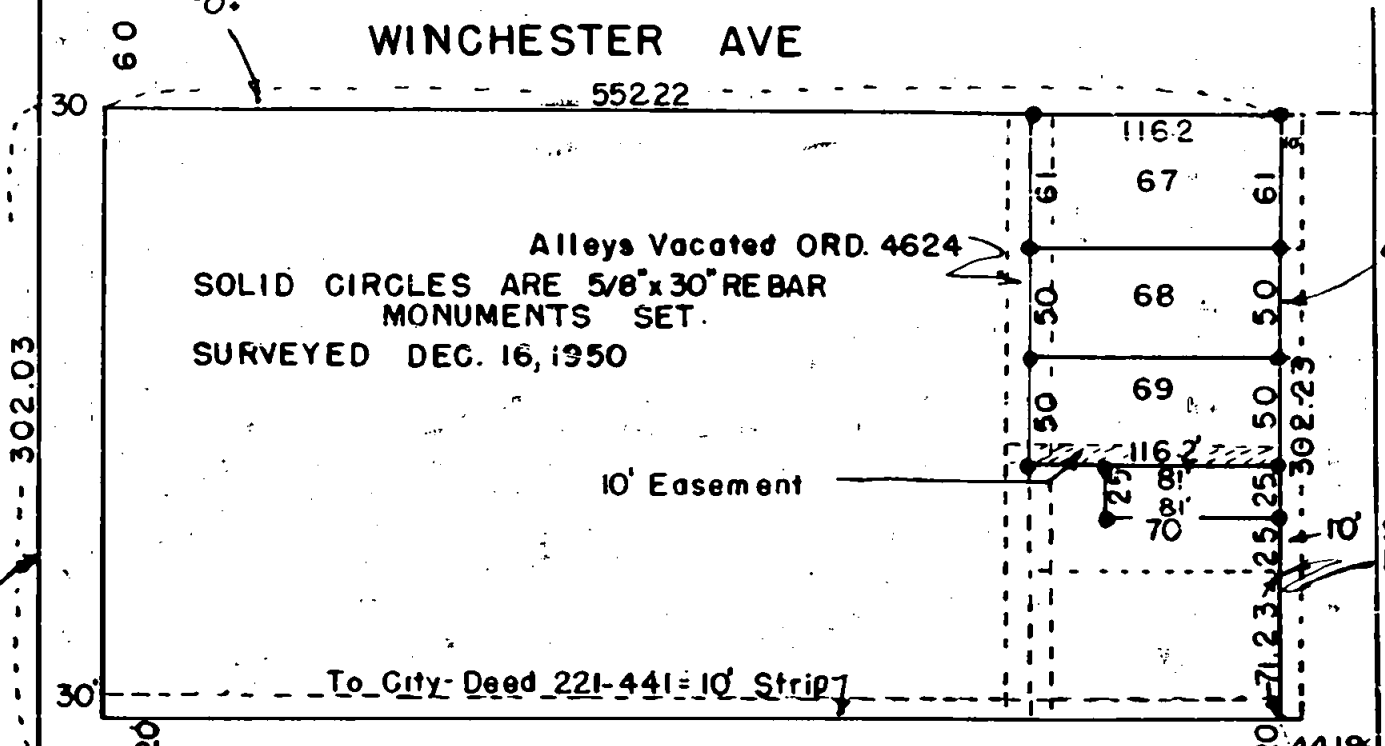
311

Set from City References

3" Brass Disc 1/4 Cor.  
25  
36  
T37S.R2W



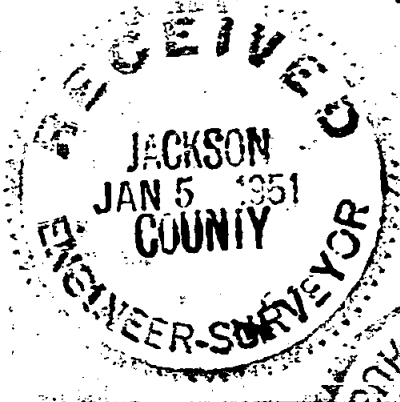
REGISTERED  
OREGON  
LAND SURVEYOR  
*L. N. Dow*  
MAY 6, 1949  
L. N. DOW  
251



Mon. N.W. Cor. D.L.C 84

STEWART AVE  
Plot 624.43  
Chd 625.14

Tack found and identified as point  
on D.L.C. line Set by City Surveyors  
1945



311

Written narrative to accompany plat for Survey No. \_\_\_\_\_  
as specified by Oregon Law.

Purpose of survey to stake lots 67, 68, 69 and part of 70  
Winchester Place addition to the City Of Medford, Oregon.

Surveyed at the request of Mr. C.A. Petrehn, Medford, Oregon.

Surveyed December 16, 1950.

Procedure, began at the location of the monument at the N.W. Cor  
of B.L.C. 84 at the intersection of Plum Street and Stewart Avenue and  
ran north on Plum Street to the center of Dakota Avenue ( a point we  
reset from City references the iron bar having been destroyed) this  
chained distance is 1328.03 feet, Plat distance 1327.12. Thence east on  
Dakota Ave 624.37 feet to a 3" Brass Monument at the center of Dakota and  
Hamilton streets. Thence south on Hamilton street chained 1326.25 feet  
Plat distance 1326.26 feet to the center of Hamilton and Stewart Ave,  
which point is a nail set by city crews at a point 625.14 feet from the  
N.W. Cor. of D.L.C. 84. With this closure on the boundaries of this  
subdivision it was determined that there is a reasonable overplus, and  
that the original plat was staked using the center of Dakota Ave and  
Plum street as bases with all lots parallel to these lines, also as  
the lots facing Dakota Ave have been previously staked by parties unknown  
using plat measurements. After due consideration to avoid confusion  
in future surveys, also to keep the streets of Winchester and Pitt in a  
straight line these lots were staked plat distances south from Dakota  
and plat distance east from Plum street as intended in the original plat,  
leaving all overplus in the south tier of lots, which are already occupied.

5/8" iron pins were set at all corners of these lots as indicated  
on the accompanying plat.

