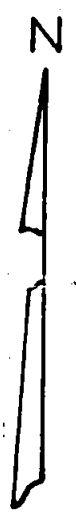
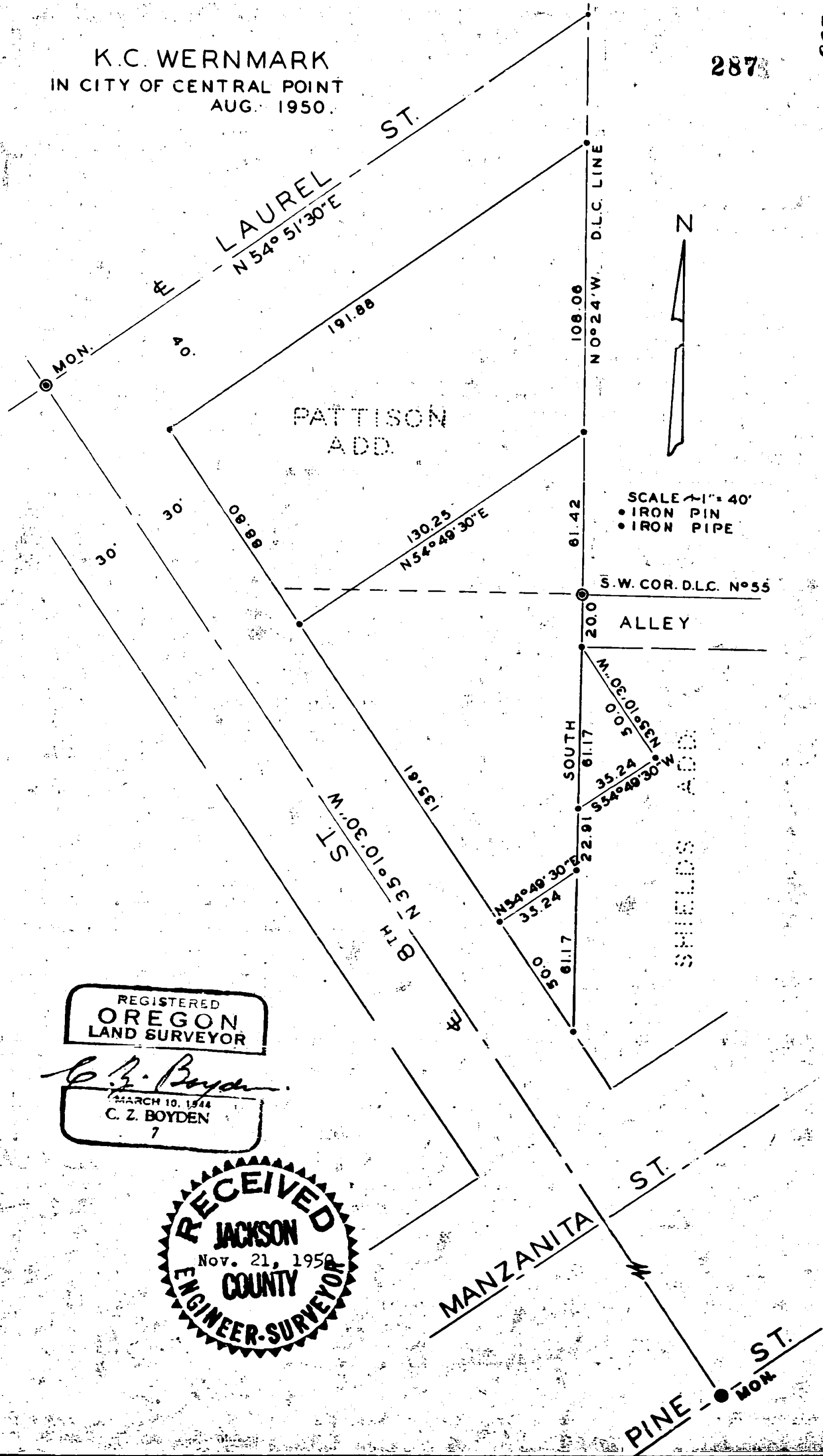


C2B.

K.C. WERNMARK
IN CITY OF CENTRAL POINT
AUG. 1950.

287

287



SCALE 1" = 40'
 • IRON PIN
 • IRON PIPE

REGISTERED
 OREGON
 LAND SURVEYOR

C. Z. Boyden

MARCH 10, 1944
 C. Z. BOYDEN
 7

RECEIVED
 JACKSON
 Nov. 21, 1950
 COUNTY
 ENGINEER-SURVEYOR

287

SURVEY NARRATIVE TO COMPLY WITH SECTION 87-330

1947 OREGON STATE LAW

Survey No. 287

For: K. C. Wernmark

Purpose of Survey: To establish the boundaries of Block No. 7, Pattison Addition to Central Point, and the K. C. Wernmark property South of said Block No. 7, and establish divisional lines as directed.

Procedure: Established the West boundary of D.L.C. No. 55, Township 37 South, Range 2 West, between the re-established S.W. Corner and ELL Corner on the West boundary. Then established the center lines of Laurel Street and 8th Street from the existing official street center line monuments. Then ran a line South from the S.W. Corner of said D.L.C. No. 55 to an intersection with the Northeasterly boundary of 8th Street. Two triangular tracts of equal size to be exchanged were staked and other monuments were set as shown on the map to accompany this report.

August - 1950
C. Z. Boyden

REGISTERED
OREGON
LAND SURVEYOR

C. Z. Boyden

MARCH 10, 1948
C. Z. BOYDEN
7

