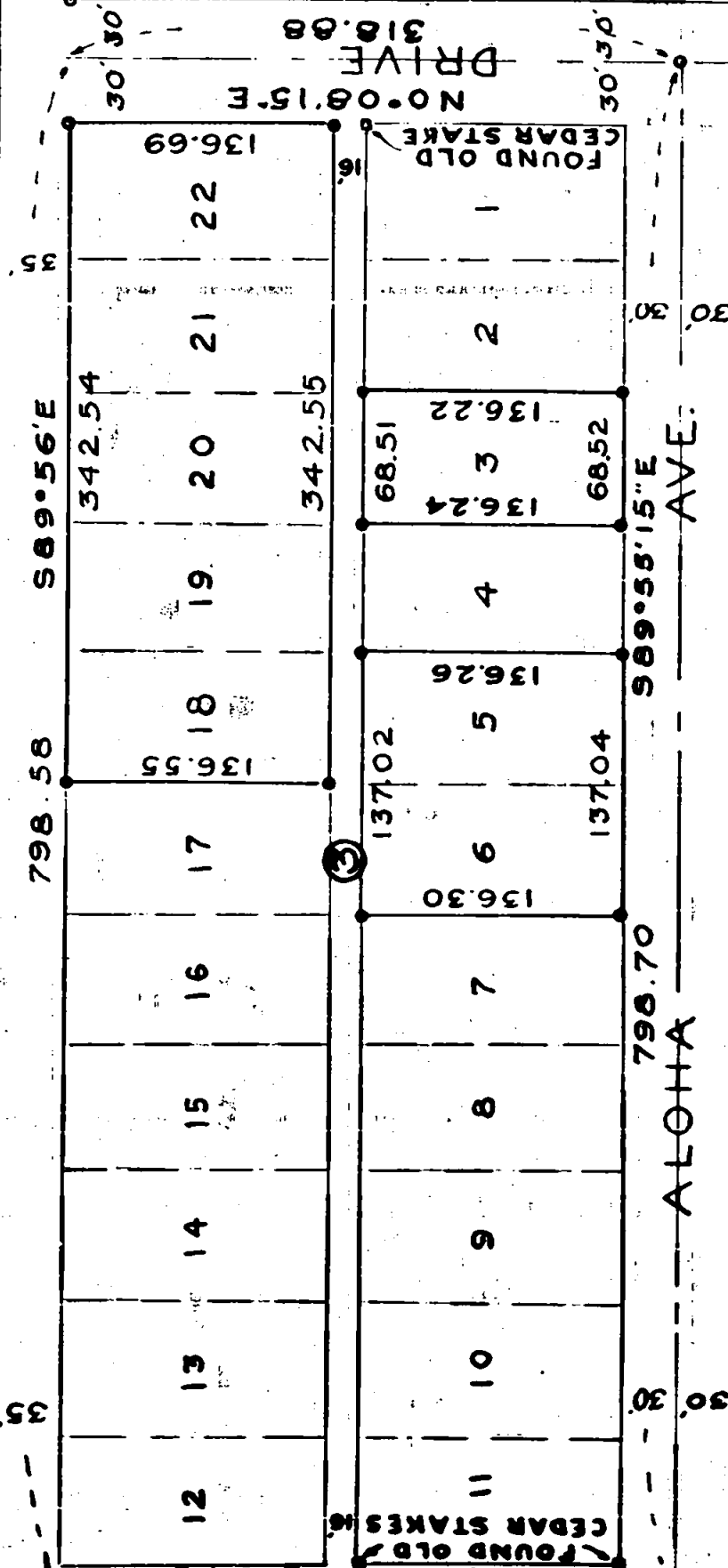
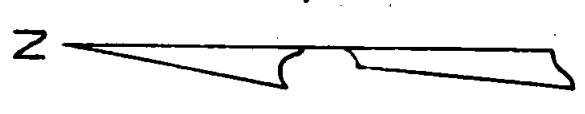


STONE WITH CROSS
SUNRISE 218.01
AVF. 1518
NO. 08.45 E



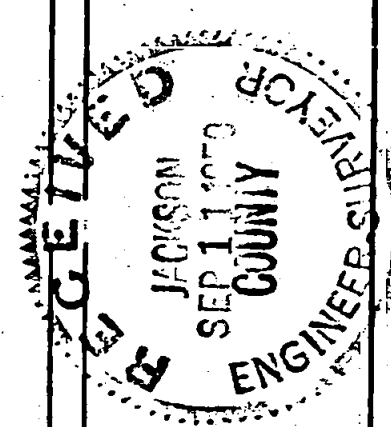
W.L. TUCKER
 LOTS 18, 19, 20, 21 & 22 ALSO
 LOTS 3, 5 & 6 BLOCK N° 3
 CAPITAL HILL ADD.
 JULY 1950



REGISTERED
 OREGON
 LAND SURVEYOR
C. Z. Boyden
 MARCH 10, 1944
 C. Z. BOYDEN
 7

SCALE 1" = 100'
 • IRON PIN
 • IRON PIPE

FOUND STAKE & PIPE



SURVEY NARRATIVE TO COMPLY WITH SECTION 87-330
1947 OREGON STATE LAW

Survey No. 268

For: W. L. Tucker

Purpose: To establish the boundaries of Lots 3, 5, 6, 18, 19, 20, 21 and 22, Block No. 3, Capitol Hill Addition to the City of Medford.

Procedure: Found the stone for initial point; also the remains of the original lot stakes at the S.W. and N.W. corners of Lot No. 11, Block No. 3, and the original stake at the N.E. corner of Lot No. 1 of Block No. 3; also a 3/4" pipe driven in the remains of the old stake at the S.W. corner of Block No. 1. From these monuments the lines of Sunrise Drive, Valley View Drive, the alley through Block No. 3, and the westerly end of Aloha Avenue were established. The intersection of Aloha Avenue and Valley View Drive was established at a proportional distance along Valley View between the old monuments. Since no stakes could be found along the North line of the addition, the North boundary of Block No. 3 was established at an official plat record distance from the stakes found on the alley boundary.

From the above-mentioned controls established the boundaries of Block No. 3 and set the required lot corners as determined by a proportion between measured and plat record distances.

Meridian was obtained by astronomical observation, and monuments were set as shown on the map to accompany this report.

July - 1950

C. Z. Boyden

