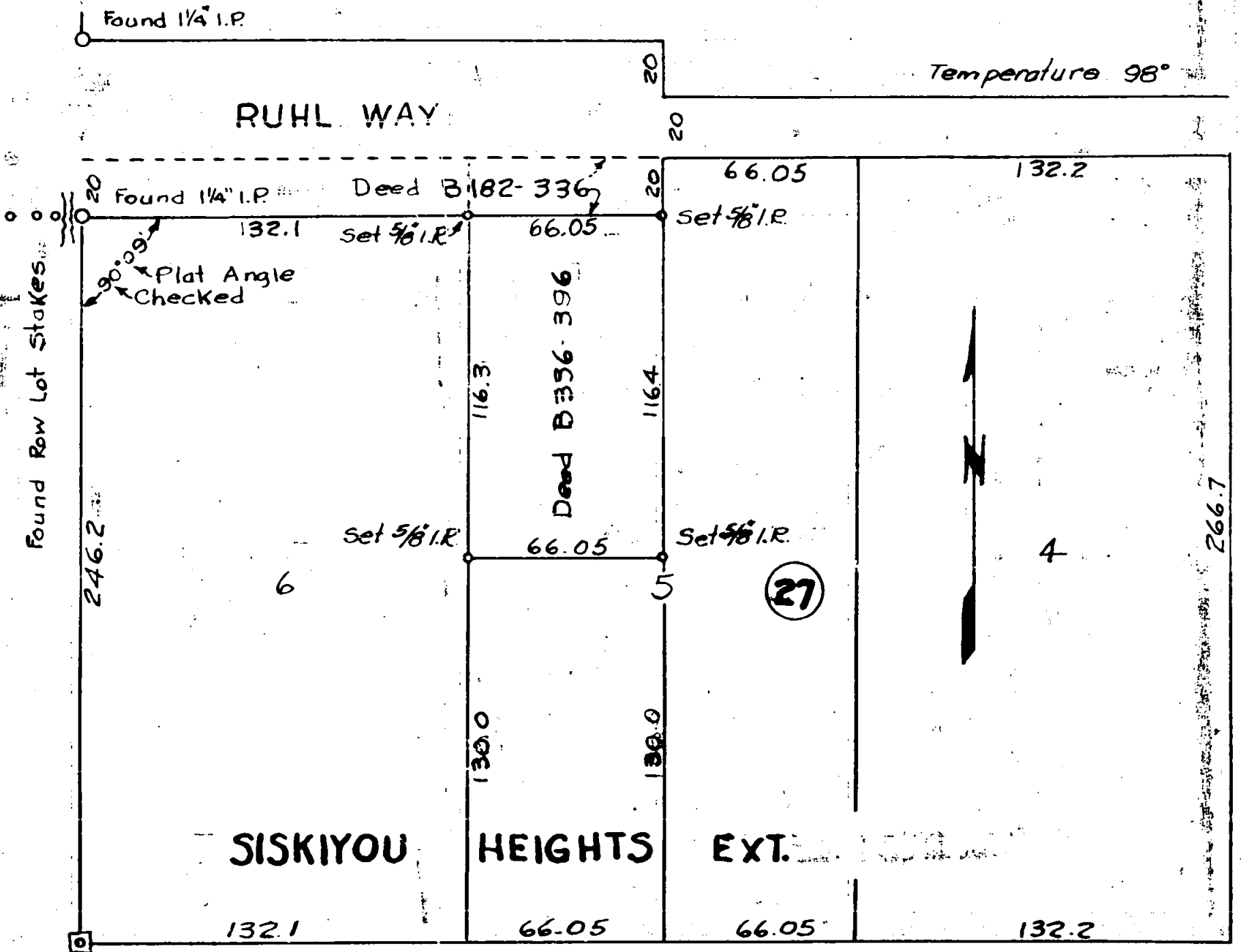
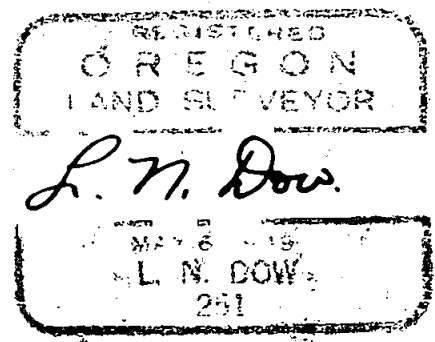
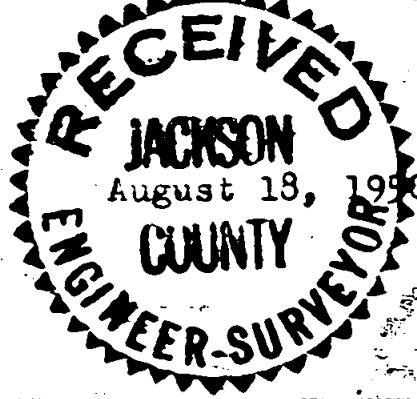


Survey at the request of Mr. Donald D. Davis, Medford, Oregon.  
 To stake corners to Deed as recorded in Book 336 P 396 Less Deed Book  
 182 P 336 Jackson County Deed Records, Survey made August 12, 1950  
 I found concrete monument with plug at southwest corner Block 27, also  
 1 1/4" iron pipe at Northwest corner Block 27 Siskiyou Heights Ext. Found  
 row of lot pins on south line of Ruhl Way corner to lots 2 & 3; 3 & 4;  
 4 & 5 Block 5 Euclid Park Add, Amended. From this information I checked  
 angle as given in Plat and established corners as shown below in plat.



Found Conc Mon & Plug



Survey No. 266