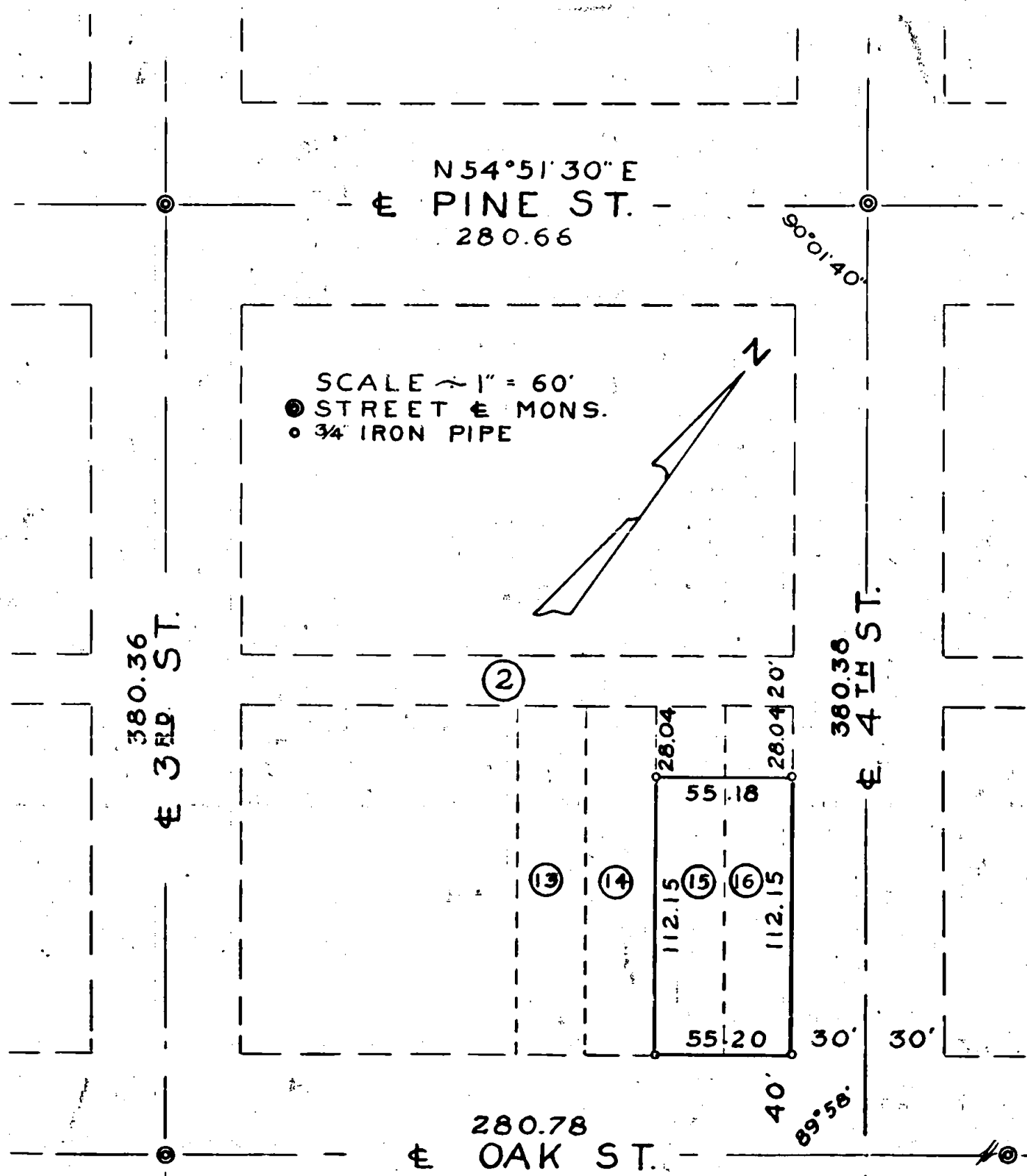


# R. PADGETT

PART OF LOTS 15 & 16, BLOCK  
NO 2, ORIG. TOWN OF CENTRAL  
POINT, ORE. MAY 1950



SCALE ~ 1" = 60'  
 ● STREET & MONS.  
 ○ 3/4" IRON PIPE

REGISTERED  
 OREGON  
 LAND SURVEYOR

*C. Z. Boyden*

MARCH 10, 1944  
 C. Z. BOYDEN  
 7



Survey No 250

250

SURVEY NARRATIVE TO COMPLY WITH SECTION 87-330,

1947 Oregon State Law.

Survey No. 250

For: R. Padgett

Purpose of Survey: To establish the boundaries of that portion of Lots 15 & 16, Block #2 of the Original Town of Central Point, owned by Mr. Padgett. (Deed not recorded.)

Procedure: Using the official street center line monuments at 3rd and 5th on Oak, and at Pine and Bush on 4th, established the intersection at 4th and Oak streets, then by using the official street center line monuments at the other three corners of the said Block #2, determined the length of all boundaries of the Block. The boundaries of Lots 15 & 16 were established by a proportional division of the Block; then the fractional parts of the Lots were established on a proportional basis determined by the ratio between record and measured distances. The Padgett property was monumented as shown on the map to accompany this report.

June - 1950.

REGISTERED  
OREGON  
LAND SURVEYOR

*C. E. Boyden*

MARCH 10, 1944  
C. E. BOYDEN  
7

