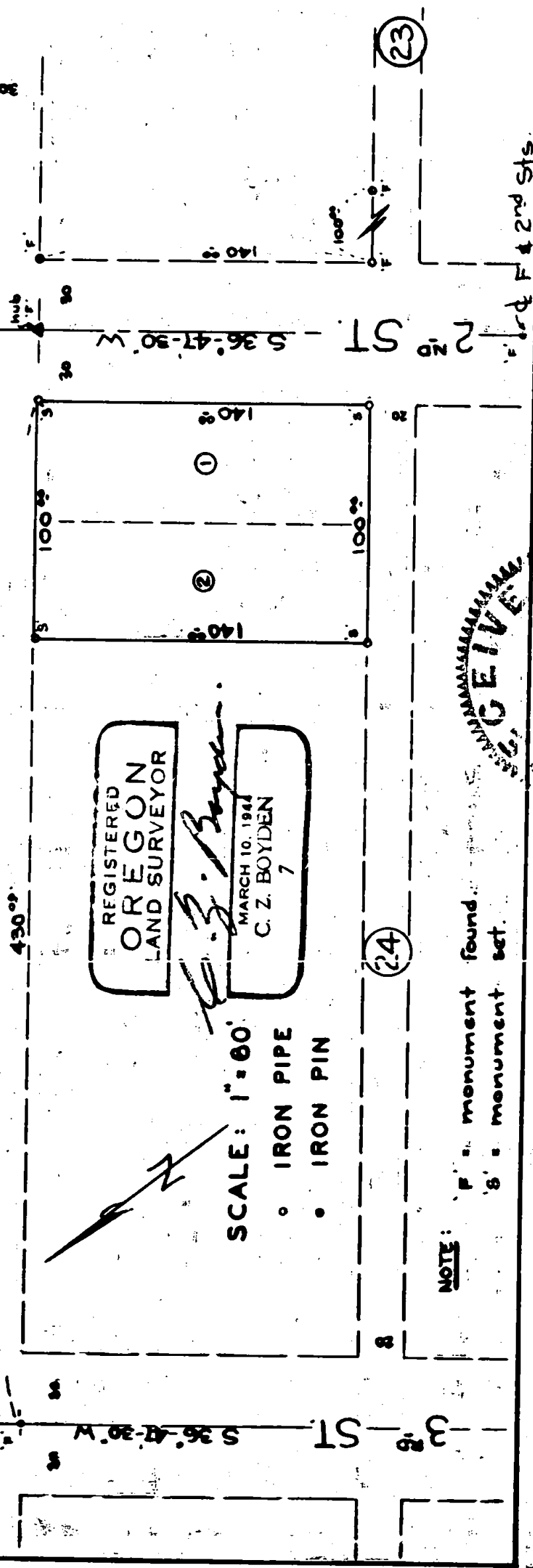


SURVEY FOR
GOLD RAY REALTY CO.
 (BY ORDER OF: FRANK H. RAY)
 LOTS 1&2, BLOCK 24: TOWN OF TOLO, OREGON
 APR. 1950.

S.P. Railroad R/W - N 53°-12'-30" W

Φ - E - - ST.



JACKSON COUNTY ENGINEER
 MAY 9 1950

Survey No. 231

For: Gold Ray Realty Co.

Purpose of Survey: To locate and monument Lots 1 and 2, Block 24, Town of Tolo, Oregon.

Procedure:

From the street and and block corner controls established by the Tolo Townsite Survey in Jan. 1949 (Note Survey No. 119; Co. Surveyor's Office), ran the lines and monumented said tract, as shown on the attached plat.

All corner monuments were stamped with No. "7".

April - 1950.

REGISTERED
OREGON
LAND SURVEYOR

C. Z. Boyden

MARCH 10, 1944
C. Z. BOYDEN
7

REGISTERED
MAY 9 1950
ENGINEER-SURVEYOR
COUNTY