

SURVEY FOR
C. E. GILKEY
 ORIGINAL TOWN - CENTRAL POINT, ORE.
 MAR. 1950.

40 N 54°-51'-30" E 280 1/4

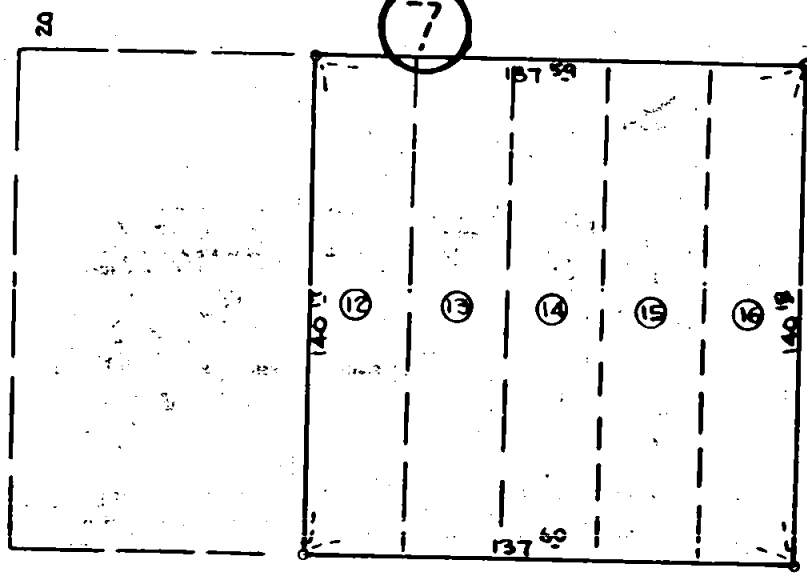
PINE ST.

40

- ☐ STONE WITH CROSS
- ⊙ CONCRETE MONUMENT
- IRON PIN
- IRON PIPE

SCALE:
 1" = 60'

7



380 3/4

2 ND ST.

380 3/4

3 RD ST.

40

280 5/8

OAK ST.

40

ALDER ST.

REGISTERED
OREGON
 LAND SURVEYOR

C. Z. Boyden
 MARCH 10, 1944
C. Z. BOYDEN
 7

RECEIVED
 MAY 5, 1950
 CLATSOP COUNTY
 CLERK

Survey No. 230

Survey No. 230

For: C. E. Gilkey

Purpose of Survey: To locate and monument the outside boundary enclosing Lots 12, 13, 14, 15, & 16, Block 7, Original Town, Central Point, Oregon.

Procedure:

Found the official centerline street monuments at Second and Pine, Third and Pine, Third and Oak Streets, and the iron pipe at Second and Oak Streets, (said iron pipe having been set previously by myself using also the official centerline street monuments at First and Oak, and Second and Alder Streets to make the Inter-section.)

Measured the distances between the monuments around the said Block, and from said information sub-divided the Block on a proportion between record and measured distances, and monumented said lots as shown on the attached plat.

March, 1950

REGISTERED
OREGON
LAND SURVEYOR

C. Z. Boyden

MARCH 10, 1944
C. Z. BOYDEN
7

May 5, 1950
County
ENGINEER-SURVEYOR