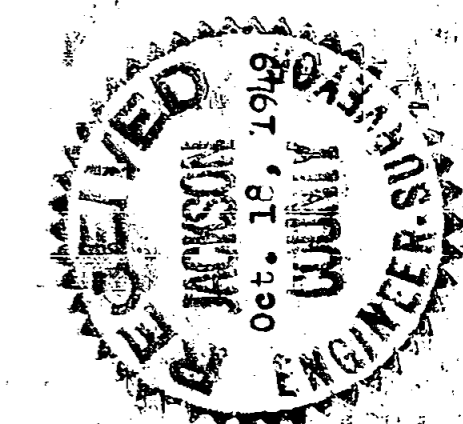
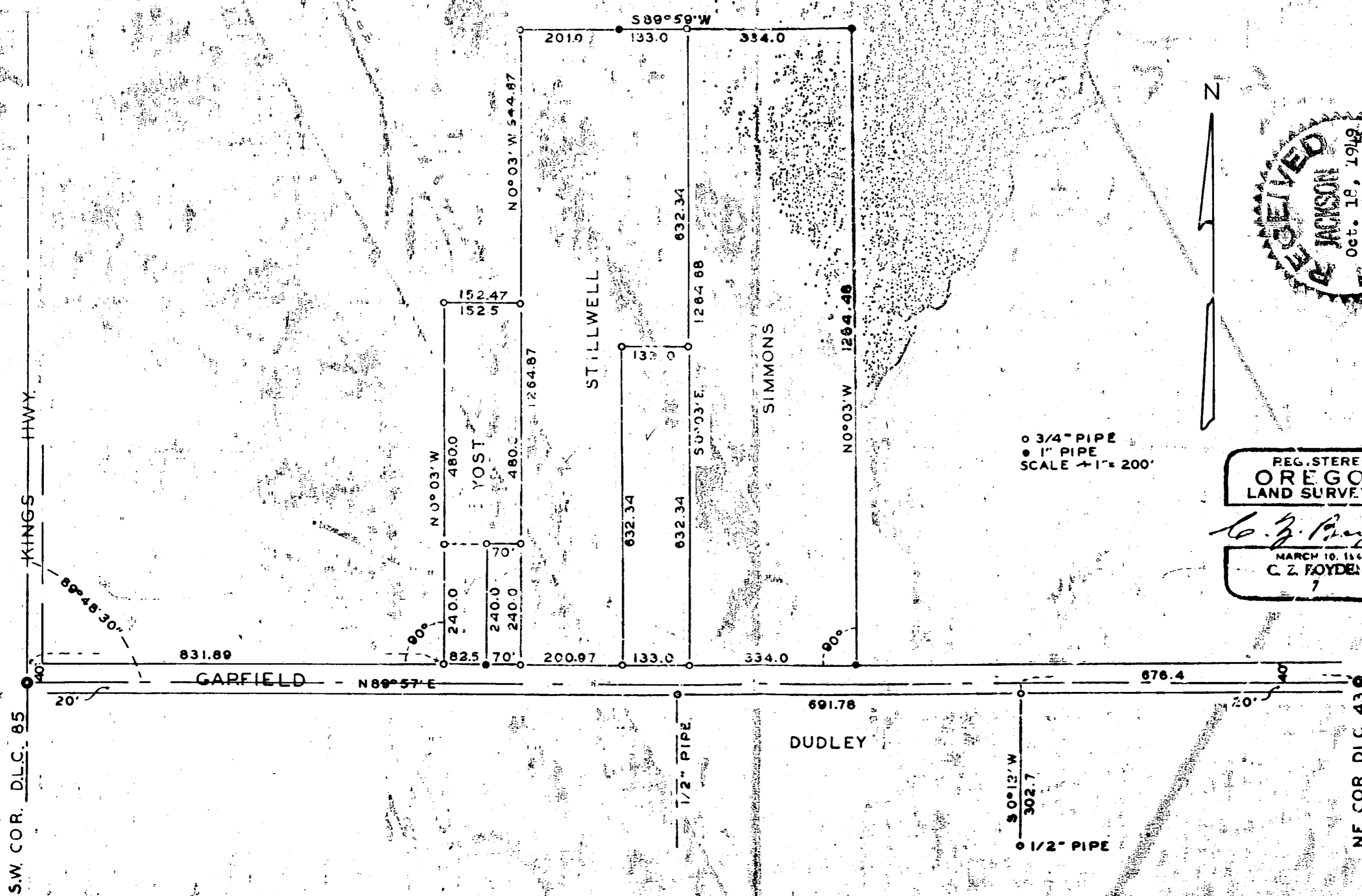
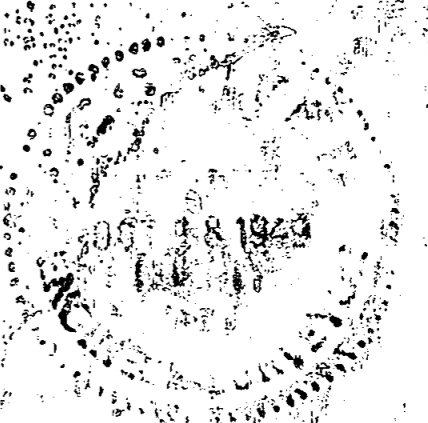


STILLWELL, YOST, DUDLEY & SIMMONS.
LOCATED IN SEC. 31, T.37 S., R.1 W., W.M.
AUG. 1949.



○ 3/4" PIPE
● 1" PIPE
SCALE 1" = 200'

REGISTERED
OREGON
LAND SURVEYOR

C. Z. Foyden

MARCH 10, 1964
C. Z. FOYDEN

Survey No. 188

For: Stillwell, Yost, Dudley and Simmons

Purpose: To establish the boundaries of properties as described and to establish the corners of other tract as directed.

Began at the Southwest corner of Donation Land Claim, No. 85, Township 37 South, Range 2 West, and ran N. 89°-57' E., along the South boundary of said Donation Land Claim, 832.02 feet;

Thence N. 0°-03' W. 40.0 feet to a point N. 89°-57' E. 831.89 feet from the West boundary of Donation Land Claim No. 85;

Then continued N. 0°-03' W. 240.0 feet to a point;

Continued N. 0°-03' W. 480.0 feet;

Thence N. 89°-57' E. 152.5 feet;

Thence N. 0°-03' W. 544.87 feet;

Thence N. 89°-59' E. 201.00 feet to a point;

Continued N. 89°-59' E. 133.0 feet to a point;

Continued N. 89°-59' E. 334.0 feet to a point for Simmons' Northeast corner.

Returned to the above mentioned point on Donation Land Claim line 832.02 feet from the Donation Land Claim corner and ran N. 89°-57' E. 82.5 feet;

Then N. 0°-03' W. 40.0 feet to a point;

Continued 240.0 feet to a corner;

Returned to the last mentioned point on the Donation Land Claim line and ran N. 89°-57' E. 70.0 feet;

Thence N. 0°-03' W. 40.0 feet;

Then continued 240.0 feet to a corner;

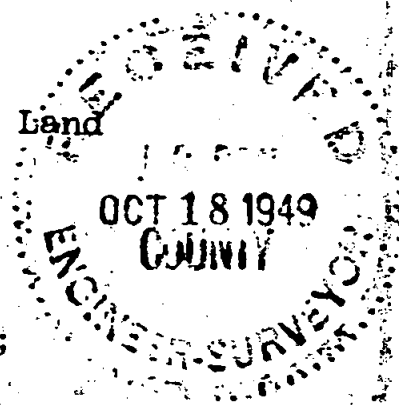
Returned to the last point set on the Donation Land Claim line and ran N. 89°-57' E. 200.97 feet;

Then N. 0°-03' W. 40.0 feet and continued N. 0°-03' W. 632.34 feet to a corner.

Returned to the last point set on the Donation Land Claim line and ran N. 89°-57' E. 133.0;

Then N. 0°-03' W. 40.0 feet;

Continued N. 0°-03' W. 632.34 feet to a corner;



Then continued 632.34 feet to a point set at the North-east corner of the Stillwell property.

Returned to the last point set on the Donation Land Claim line and ran N. 89°-57' E. 334.0 feet;

Thence N. 0°-03' W. 40.0 feet to a point from which Simmons' Northeast corner bears N. 0°-03' W. 1264.48 feet;

Then went to the Northeast corner of Donation Land Claim No. 43, Township 37 South, Range 1 West, and ran S. 89°-57' W. 676.4 feet along the Donation Land Claim line;

Then S. 0°-12' W. 20.0 feet;

Continued S. 0°-12' W. 302.7 feet to a point on property line.

Returned to the point last set on Donation Land Claim line and ran S. 89°-57' W. 691.87 feet;

Then S. 0°-12' W. 20.0 feet to Dudley's Northwest corner.

Pipe monuments stamped with a No. "7" were set for corners as shown on map to accompany this report.

REGISTERED
OREGON
LAND SURVEYOR

C. Z. Boyden

MARCH 10, 1944
C. Z. BOYDEN
7

REGISTERED
ENGINEER-SURVEYOR
OCT 18 1949
CLATSOP COUNTY