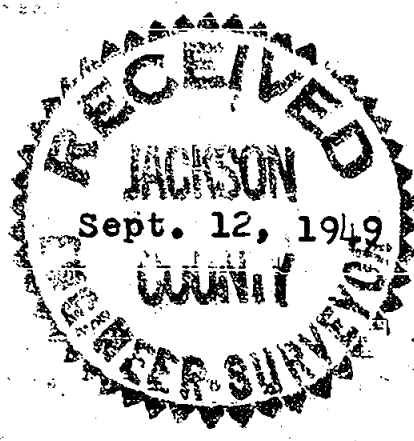


SURVEY FOR
GEORGE RASMUSSEN
LOT N° 26 & PART OF LOT N° 23, IN
COUNTRY CLUB PARK.
JUNE, 1949

REGISTERED
OREGON
LAND SURVEYOR

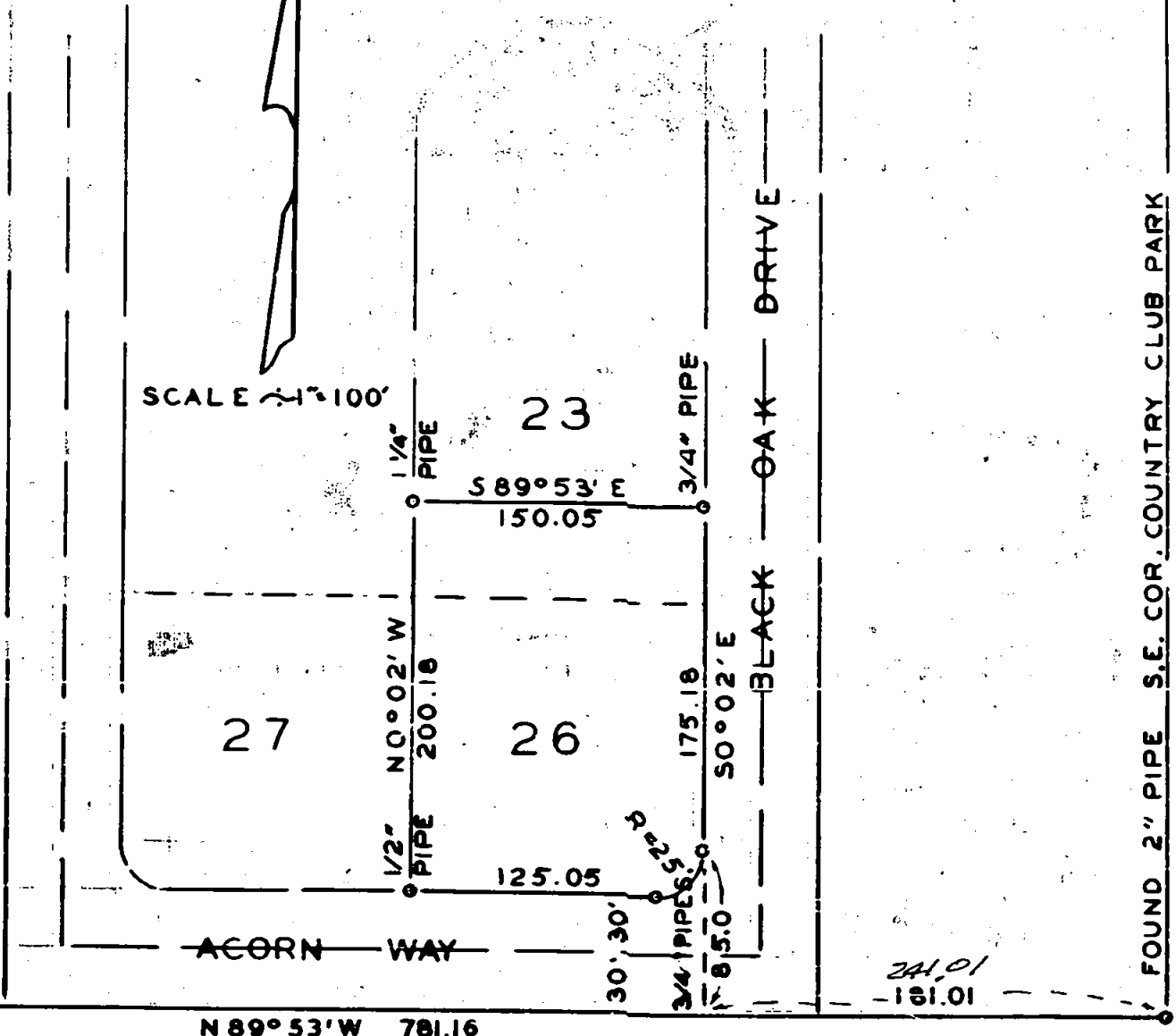
C. Z. Boyden

MARCH 10, 1944
C. Z. BOYDEN
7



SCALE 1" = 100'

FOUND 1/2" PIPE S.W. COR. COUNTRY CLUB PARK



FOUND 2" PIPE S.E. COR. COUNTRY CLUB PARK

N 89° 53' W 781.16

241.01
101.12

Survey No. 185

For: Goerge Rasmussen

Purpose of Survey: To establish the boundaries of Lot No. 26, plus the Southerly 50 feet of Lot No. 23 in Country Club Park.

Began at a 2" iron pipe at the S.E. corner of Country Club Park and ran N. 89° 53' W. 781.16 feet to a 1/2" pipe at the S.W. corner of said subdivision. Then set a point N. 89° 53' W. 181.01 241.01 from the said S.E. corner and ran N. 0° 02' W. 85.0 feet and set a 3/4" pipe for a point on the West boundary of Black Oak Drive being a point of curve on the block corner rounded on a 25.0 foot radius curve. Continued N. 0° 02' W. 175.18 feet and set the N.E. property corner. Then set a point N. 89° 53' W. 331.06 from the S.E. corner of said subdivision; then ran N. 0° 02' W. 60.0 feet and set the S.W. property corner. Then ran S. 89° 53' E. 125.05 along the North boundary of Acorn Way and set the curve point of the rounded block corner. Returned to the S.W. property corner and ran N. 0° 02' W. 200.16 feet to the N.W. corner; then S. 89° 53' E. 150.05 to the N.E. corner. Iron pipes stamped with a No. "7" were set for corners as shown on accompanying plat.

June, 1949

REGISTERED
OREGON
LAND SURVEYOR

C. Z. Boyden

MARCH 10, 1943
C. Z. BOYDEN
7

SEP 12 1949
CLATSOP COUNTY
REGISTERED SURVEYOR